

The Australian International Beer Awards
2002 Catalogue of Results



Proudly brought to you by



Exclusive Retail Partner



UNIVERSITY of BALLARAT



Here's to diversity and excellence

Liquorland sponsors the Australian International Beer Awards to encourage diversity and excellence in brewing and to widen the palette of beer flavours available to the Australian consumer.

Liquorland congratulates all award winners, and is especially proud to present this year's Grand Champion.

At Liquorland we recognise and reward excellence in brewing. And we toast the Australian public for so wholeheartedly embracing the far greater diversity of beer styles now being offered.



Exclusive Retail Partner

Australian International Beer Awards 2002

INDEX

Event Organising Committee	4
Report on Entries	4

2002 JUDGING

Grand Champions	5
2002 Judging Panel	7
Competition Classes	10

2002 RESULTS

Trophy Awards	14
Best of Class Winners	17
International Section	19
Australasian Section	22
Small Brewery Section	24
Specialty Section	28
Packaging Section	31
Index of Exhibitors	34



INNOVATIVE PACKAGING
SOLUTIONS



International Malting Company Australia Pty Ltd
is proud to be a sponsor of the
10th Annual Australian International Beer Awards.

We congratulate the winner of the
Champion Ale Category
and all other exhibitors
on their entries for 2002.

“MALTSTERS TO THE WORLD”

Australia, New Zealand, Canada, USA & France

TAP INTO A TOTAL PACKAGING SOLUTION WITH VISY



Visy provides brewers and fillers with access to a wide range of packaging that is designed to enhance consumer appeal and improve the marketability of your products.

Visy produces beverage cans which offer under-tab coding for promotions, a wide range of printing processes that delivers "life like" images, embossing and wet look lacquer finishes.

Using computerised graphic design technology, Visy also offers world class high resolution graphics and precise photographic reproduction capabilities.

If you would like to know how Visy can help your brewing business, please call Peter Dwan on (03) 9247 4777 or email packaging@visy.com.au

VISY

**INNOVATIVE PACKAGING
SOLUTIONS.**

EVENT ORGANISING COMMITTEE

Mr Gary Sheppard	(Chairman) Royal Agricultural Society of Victoria
Dr Peter Aldred	University of Ballarat
Mr Roger Bussell	Chief Judge
Mr Rob Greig	University of Ballarat
Mr Ross Norris	Quest International
Dr Carolyn Russell	University of Ballarat
Ms Barbara Chalkley	Manager, Events Development
Ms Kerry James	Event Manager

REPORT ON ENTRIES

A number of entries - 446 - were received from 75 breweries and 19 countries at this year's Australian International Beer Awards.

Competition Section	Number of Entries
International	114
Australasian	89
Small Brewery	156
Specialty	84
Packaging	3
Total All Sections	446

For more information regarding the Awards
 Kerry James, Event Manager
 Tel: 61 3 92817435
 Fax: 61 3 93768156
 Email: kerry.james@rasv.com.au

Visit the awards website at:
www.beerawards.com

GRAND CHAMPIONS



2002
Samuel Adams Double Bock
Boston Beer Company, USA



2001
Schofferhofer Kristallweizen
Binding Braueri



2000
Hoegaarden White
Interbrew, Belgium



1999
Hahn Premium
Tooheys



1998
James Boags Premium Lager
J Boag & Son Limited



1997
Lion Lager
South African Breweries



1996
Carling Black Label
South African Breweries



1995
Hahn Ice
Tooheys

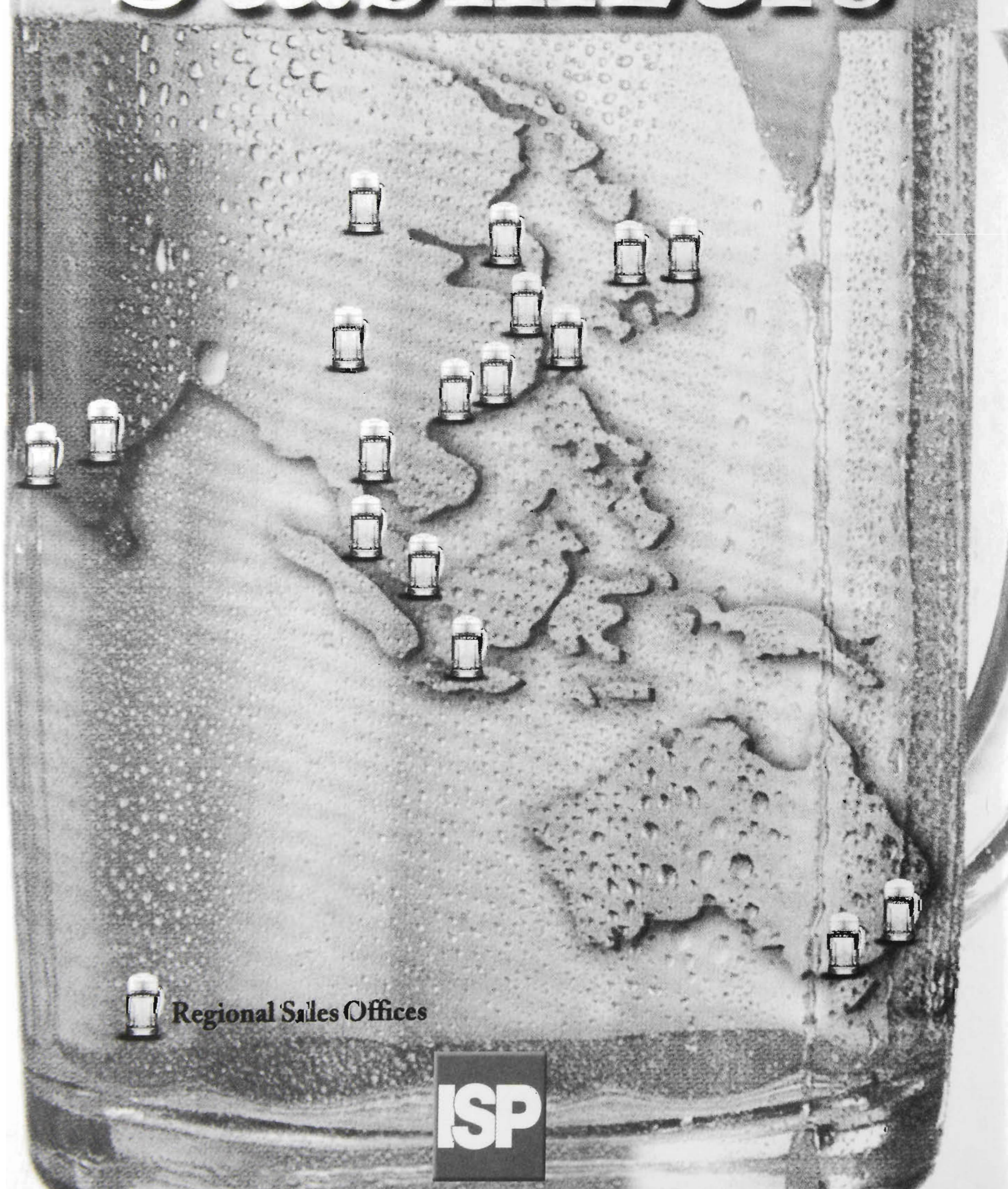


1994
Coopers Best Extra Stout
Coopers Brewery Limited

1993 Red Back Original Wheat Beer
Red Back Brewery



POLYCLAR[®] Stabilizers



Regional Sales Offices



POLYCLAR PVPP STABILIZERS

2002 JUDGING PANEL

Mr Roger Bussell	Chief Judge, Western Australia
Dr Barry Axon	DB Breweries, New Zealand
Mr Richard Benwell	J Boag & Son, Tasmania
Robert Bouquet	Bouquet Productions
Mr John Byron	InLine Studios
Mr Dave Edney	Stockade Brewery, Victoria
Dr Roger Edwards	Co-Operative Research Centre for International Food Manufacturing & Packaging Science
Mr Simon Fahey	Coopers Brewery Limited, South Australia
Mr Pat Goddard	Tooheys Brewing P/L, New South Wales
Mr Rob Greenaway	Carlton & United Breweries, Victoria
Mr Rob Greig	University of Ballarat, Victoria
Mr Franklin Lucarotti	Little Creatures Brewering Pty Ltd, Western Australia
Mr Peter Manders	Carlton & United Breweries, Victoria
Mr Dermot O'Donnell	Carlton & United Breweries, Victoria
Mr Rob Rich	Quest International, New Zealand
Mr Chris Shanahan	Liquorland, New South Wales
Mr Nick Sterenberg	Coopers Brewery Limited, South Australia
Mr Bill Taylor	Lion Nathan, New South Wales

International Judge Profile

Ms Teri Fahrendorf

Brewmaster

Steelhead Brewing Co. & Bulldog Brewing Co., Eugene, USA

Formerly a systems analyst for Unisys Corporation in San Francisco, a Fortune 100 company, Teri has been making beer professionally since 1988. Steelhead Brewing Company is the fourth brewing company Teri has worked for, and she has been happily employed with Brewmaster since September 1990. Now the Corporate Brewmaster for both Steelhead and Bulldog Brewing Companies, she is the brewery project manager on all new brewpub installations, and is responsible for hiring and training Head Brewers for all locations.

Teri manages brewing operations and production, quality control and brewery staff development at five brewpub locations with Steelhead in Eugene, Oregon; San Francisco, Burlingame and Irvine, California; and Bulldog in Fresno, California. Her previous professional brewing experience includes Sieben's River North Brewpub in Chicago and Golden Gate Brewery and Triple Rock Brewery, both in Berkeley, California.

Five of Teri's beers have won medals at the Great American Beer Festival in Denver, Colorado, 1991-1995. No longer brewing on a daily basis, the Head Brewers she trained have gone on to win eleven more GABF medals and currently all Steelhead and Bulldog locations have won G.A.B.F. medals. Teri has been a member of the Master Brewers Association of the Americas since 1989 and served on the MBAA Education Committee 1999-2000.

Teri was also founding Treasurer of the Oregon Brewers Guild 1992-1994. since 1991, Teri has been invited to be one of 95 international judges chosen for the Professional Panel Blind Tastings, held annually in conjunction with the Great American Beer Festival and held bi-annually with the World Beer Cup. She is also a Certified Beer Judge for homebrew competitions. Teri has been a technical speaker at many industry conferences, has written technical articles for brewing trade magazines and books and is a Diploma graduate of the Siebel Institute of Brewing Technology in Chicago, Illinois. In 2000, Teri was selected for inclusion in the Millenium Edition of "Who's Who of American Women 2000-2001".



NATIONAL liquor news

THE MOST COMPREHENSIVE BEER NEWS FOR THE INDUSTRY EVERY MONTH

Beer Features

August
BEER DIRECTORY

November
PREMIUM AND
IMPORTED BEERS

June
December
ALB MARKET GUIDE

Brewing Market (News)

Beer Reviews

June
ENGLISH

July
STOUT

August
BELGIAN

September
CENTRAL + SOUTH
AMERICAN

October
AMERICAN

November
GERMAN

December
IRISH

January
AFRICAN

February
WHEAT

March
FRENCH

April
DUTCH

May
ASIAN

FOR MORE INFORMATION ON THESE AND OTHER UPCOMING STORIES
PLEASE CONTACT ASHLEY PINI 02 9357 5620 apini@npg.com.au

Joe White Maltings

A World of Difference

- *Different Products*
- *Different Colours*
- *Different Flavours*

23 Clarendon Street,
East Melbourne, 3002, AUSTRALIA

T. (+61-3) 9419-7411 F. (+61-3) 9419-4218

E. info@joewhitemaltings.com.au

W. www.joewhitemaltings.com.au



Joe White Maltings

INTERNATIONAL SECTION

PACKAGED BEER

Open to all commercial brewers authorised, licensed or registered in their country of origin, with a minimum brewlength of 40 hL. Australasian brewers that meet the minimum brew length requirement are also eligible to enter this section.

- CLASS 1 Lager**
- Sub-class**
- a) European Style Lager
 - b) Pilsener Style (Greater than or equal to 30 International Bitterness Units)
 - c) Dark Lager
 - d) Other, e.g. Amber, Bock, Oktoberfest, Marzen, Vienna (brewer must specify style)
- CLASS 2 Ale**
- Sub-class**
- a) British –Style Pale Ale
 - b) American –Style Pale ale
 - c) India Pale Ale
 - d) Amber Ale
 - e) Dark Ale
 - f) Other (brewer must specify style)
- CLASS 3 Porter**
- CLASS 4 Stout**
- Sub-class**
- a) Dry
 - b) Sweet
 - c) Imperial

DRAUGHT

Each entry in a Draught Class shall consist of not less than 10L and be in an appropriate container, cask or keg. Product may be conditioned in container.

- CLASS 5 Lager**
- Sub-class**
- a) European Lager Style
 - b) Pilsener Style (Greater than or equal to 30 International Bitterness Units)
 - c) Dark Lager
 - d) Other, e.g. Amber, Bock, Oktoberfest, Marzen, Vienna (brewer must specify style)
- CLASS 6 Ale**
- Sub-class**
- a) British –Style Pale Ale
 - b) American –Style Pale ale
 - c) India Pale Ale
 - d) Amber Ale
 - e) Dark Ale
 - f) Other (brewer must specify style)
- CLASS 7 Porter**
- CLASS 8 Stout**
- Sub-class**
- a) Dry
 - b) Sweet
 - c) Imperial

AUSTRALASIAN SECTION

PACKAGED BEER

This section is open to all brewers licensed for sale in Australia, New Zealand and Pacific Islands, i.e. those holding the requisite licenses from the relevant Federal and State authorities in Australia and the relevant statutory authorities in New Zealand and the Pacific Islands. There is no minimum brewlength for this section.

CLASS 9 Lager

- Sub-class**
- a) Australian Style Lager
 - b) European Lager Style
 - c) Pilsener Style (Greater than or equal to 30 International Bitterness Units)
 - d) Dark Lager
 - e) Other, e.g. Amber, Bock, Oktoberfest, Marzen, Vienna (brewer must specify style)

CLASS 10 Ale

- Sub-class**
- a) British –Style Pale Ale
 - b) American –Style Pale ale
 - c) India Pale Ale
 - d) Amber Ale
 - e) Dark Ale
 - f) Other (brewer must specify style)

CLASS 11 Porter

CLASS 12 Stout

- Sub-class**
- a) Dry
 - b) Sweet
 - c) Imperial

CLASS 13 Reduced Alcohol - Any product with alcohol content not less than 1.15% v/v and not greater than 3.5% v/v.

DRAUGHT

Each entry shall consist of not less than 10L and be in an appropriate container, cask or keg. Product may be conditioned in container.

CLASS 14 Lager - (Less than 20 EBC Colour Units)

- Sub-class**
- a) Australian Style Lager
 - b) European Lager Style
 - c) Pilsener Style (Greater than or equal to 30 International Bitterness Units)
 - d) Dark Lager
 - e) Other, e.g. Amber, Bock, Oktoberfest, Marzen, Vienna (brewer must specify style)

CLASS 15 Ale

- Sub-class**
- a) British –Style Pale Ale
 - b) American –Style Pale ale
 - c) India Pale Ale
 - d) Amber Ale
 - e) Dark Ale
 - f) Other (brewer must specify style)

CLASS 16 Porter

CLASS 17 Stout

- Sub-class**
- a) Dry
 - b) Sweet
 - c) Imperial

CLASS 18 Reduced Alcohol - Any product with alcohol content not less than 1.15% v/v and not greater than 3.5% v/v.

SMALL BREWERY SECTION

PACKAGED BEER

Open to all commercial brewers authorised, licensed or registered in their country of origin, with a maximum brewlength of 30 hL. The product must be commercially available.

CLASS 19 Lager

- Sub-class**
- a) Australian Style Lager
 - b) European Lager Style
 - c) Pilsener Style (Greater than or equal to 30 International Bitterness Units)
 - d) Dark Lager
 - e) Other, e.g. Amber, Bock, Oktoberfest, Marzen, Vienna (brewer must specify style)

CLASS 20 Ale

- Sub-class**
- a) British –Style Pale Ale
 - b) American –Style Pale ale
 - c) India Pale Ale
 - d) Amber Ale
 - e) Dark Ale
 - f) Other (brewer must specify style)

CLASS 21 Porter
CLASS 22 Stout

- Sub-class**
- a) Dry
 - b) Sweet
 - c) Imperial

CLASS 23 Reduced Alcohol - Any product with alcohol content not less than 1.15% v/v and not greater than 3.5% v/v.

DRAUGHT

Each entry shall consist of not less than 10L and be in an appropriate container, cask or keg. Product may be conditioned in container.

CLASS 24 Lager

- Sub-class**
- a) Australian Style Lager
 - b) European Lager Style
 - c) Pilsener Style (Greater than or equal to 30 International Bitterness Units)
 - d) Dark Lager
 - e) Other, e.g. Amber, Bock, Oktoberfest, Marzen, Vienna (brewer must specify style)

CLASS 25 Ale

- Sub-class**
- a) British –Style Pale Ale
 - b) American –Style Pale ale
 - c) India Pale Ale
 - d) Amber Ale
 - e) Dark Ale
 - f) Other (brewer must specify style)

CLASS 26 Porter
CLASS 27 Stout

- Sub-class**
- a) Dry
 - b) Sweet
 - c) Imperial

CLASS 28 Reduced Alcohol - Any product with alcohol content not less than 1.15% v/v and not greater than 3.5% v/v.

SPECIALITY SECTION

PACKAGED BEER

Open to all commercial brewers authorised, licensed or registered in their country of origin. There is no minimum brewlength for this section, however, the product must be commercially available in the country of origin.

- CLASS 29** **Low Alcohol** - Any product with alcohol content less than 1.15% v/v
- CLASS 30** **Wheat Beer** - extract must be derived from at least 30% wheat
- a) Wheat (made with wheat, ale or lager, no phenolics, filtered or unfiltered)
 - b) German Style Kristal
 - c) German Style Hefeweizen
 - d) German Style Dark / Dunkel
 - e) Berlinerweiss Style
- CLASS 31** **Herb and Spice Beers** - (ales or lagers) e.g. brewed with the addition of herbs, chilli etc.
Brewer must specify beer style on entry form
- CLASS 32** **Fruit Beers** - (ales or lagers) brewed with the addition of fruit. **Brewer must specify beer style on entry form**
- CLASS 33** **Belgian and French Style Ales**
- Sub-class**
- a) Strong Golden Ale
 - b) Tripel
 - c) Lambic, geuze
 - d) Abbey Style
 - e) Kreiks, Frombozen, etc
 - f) Saison
- CLASS 34** **Belgian Style Witbiere**
- CLASS 35** **Scotch Ale and Barleywines. Brewer must specify beer style on entry form.**
- CLASS 36** **Experimental Beers** - (ales or lagers) e.g. brewed with the addition of honey, smoked malt, etc. **Brewer must specify beer style on entry form.**

DRAUGHT

Each entry shall consist of not less than 10L and be in an appropriate container, cask or keg. Product may be conditioned in container.

- CLASS 37** **Low Alcohol** - Any product with alcohol content less than 1.15% v/v
- CLASS 38** **Wheat Beer** - extract must be derived from at least 30% wheat.
- Sub-class**
- a) Wheat (made with wheat, ale or lager, no phenolics, filtered or unfiltered)
 - b) German Style Kristal
 - c) German Style Hefeweizen
 - d) German Style Dark / Dunkel
 - e) Berlinerweiss Style
- CLASS 39** **Specialty Beers**
- Sub-class**
- a) Herb and Spice Beers
 - b) Fruit Beers
 - c) Belgian and French Style Ales
 - d) Belgian Style Witbeers
 - e) Scotch Ale and Barleywines
 - f) Experimental Beers

PACKAGING SECTION

Open to all commercial packaged (bottled or canned) products.

CLASS 40 Packaging

Criteria for Consideration

1. Packaging Aesthetics (eg. end user appeal, name or brand visibility, suitability of package for displays, unique aesthetics characteristic). **Maximum 10 Points**
2. Product Information (eg, product usage / ideas. Product ingredients listing, regulatory information and other unique information). **Maximum 6 points**
3. Utility of Packaging (eg, ease of opening, protection of product, recyclable materials). **Maximum 4 points**

TROPHY WINNERS

GRAND CHAMPION TROPHY

For the Highest Scoring Beer

Samuel Adams Double Bock

Boston Beer Company, USA

PREMIER'S TROPHY

For Best Victorian Beer

Moonshine

Grand Ridge Brewery

Vice Chancellor's Trophy for CHAMPION AUSTRALASIAN BREWERY

Little Creatures Brewing Pty Ltd

Western Australia

CHAMPION INTERNATIONAL BREWERY

Sponsored by: Joe White Maltings

Little Creatures Brewing Pty Ltd

Western Australia

CHAMPION SMALL BREWERY

Sponsored by: Advance Bottling UK Limited

Founders Organic Brewery

Nelson, NZ

CHAMPION SPECIALTY BEER

Sponsored by: National Liquor News

Maisel Kristal Wheat Beer

Maisel Breweries, Beach Avenue Wholesalers

CHAMPION LAGER

Sponsored by: Visy Industries

Samuel Adams Double Bock

Boston Beer Company

CHAMPION ALE

Sponsored by: International Malting Company

Little Creatures Pale Ale

Little Creatures Brewing Pty Ltd

CHAMPION STOUT

Rogue Imperial Stout

Rogues Ales

CHAMPION REDUCED OR LOW ALCOHOL BEER

Clausthaler Premium Low-Alcohol

Binding Brewery, Beach Avenue Wholesalers

BEST PACKAGING AWARD

Sponsored by: Framax/AEB

First Harvest Ale

Carlton & United Breweries

JUDGES AWARD

Sponsored by: ISP Polyclar

ABUK

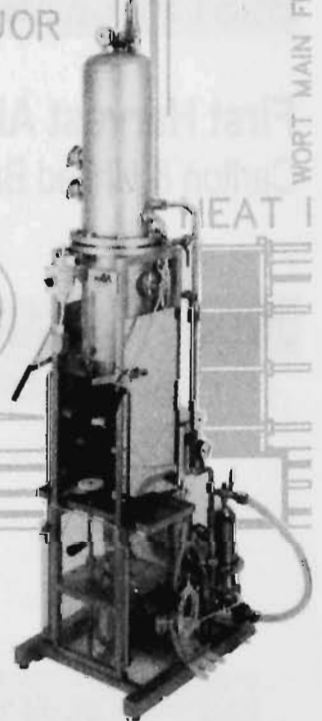
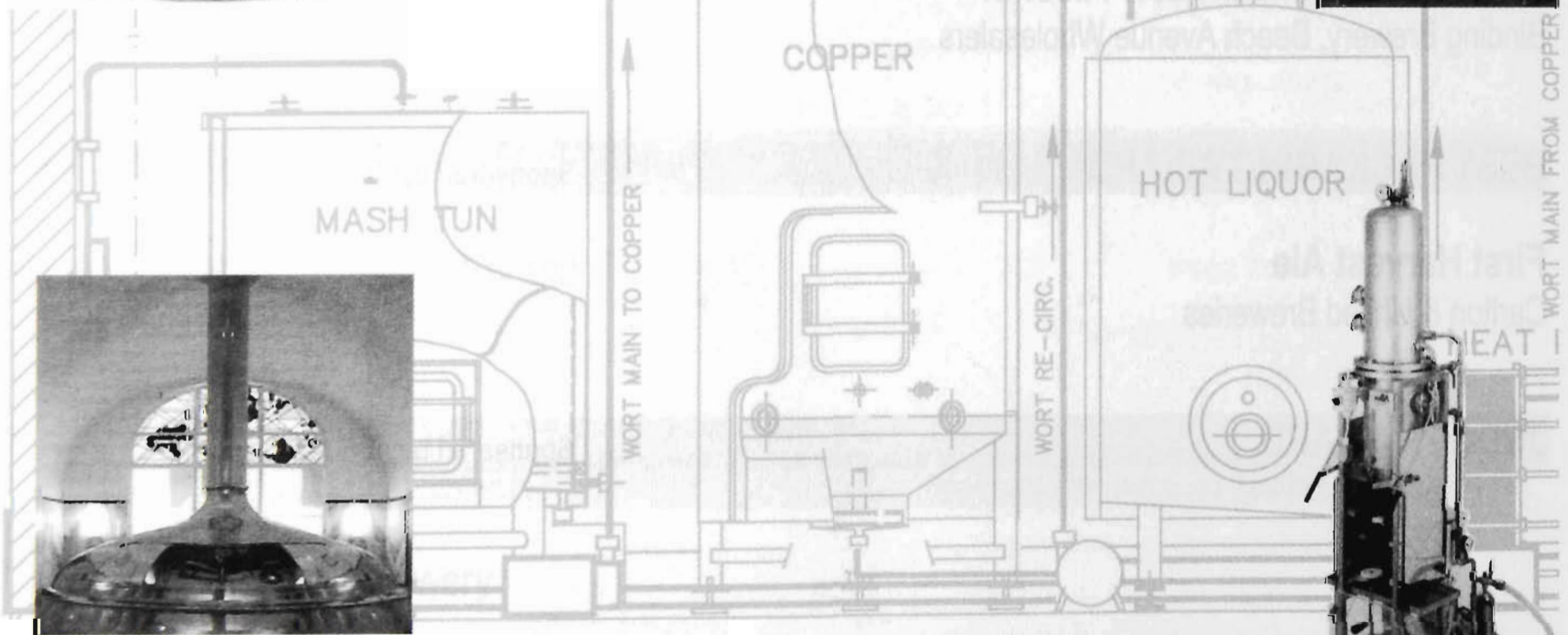
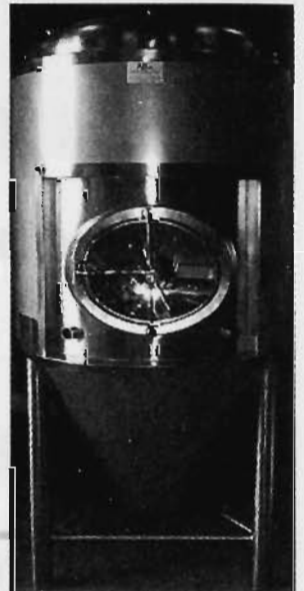
Advanced Bottling UK Limited

SUPPLIERS OF BREWING, BOTTLING & PACKAGING EQUIPMENT



BRINGING 19 YEARS OF EXPERIENCE TO THE AUSTRALIAN BREWING INDUSTRY

- Specialists in new and used micro-brewing equipment.
- Suppliers of competitively priced 800 Litre second hand ale and lager breweries installed in Australian hotels and restaurants.
- Representatives for Bavarian Brewing Technologies brewing equipment.
- Suppliers of counter-pressure bottle fillers.



Advanced Bottling UK Limited

Suppliers of Brewing, Bottling & Packaging Equipment

Brealey Works
Station Road
Misterton

North Nottinghamshire
DN10 4DD UK

In Australia & New Zealand contact:

Wes Smith

Wes Smith & Associates Pty Ltd

P O Box 1661
Bowral NSW 2576

Phone: (02) 4861 5036, Fax: (02) 4861 5037
Email: wsmith@acenet.com.au

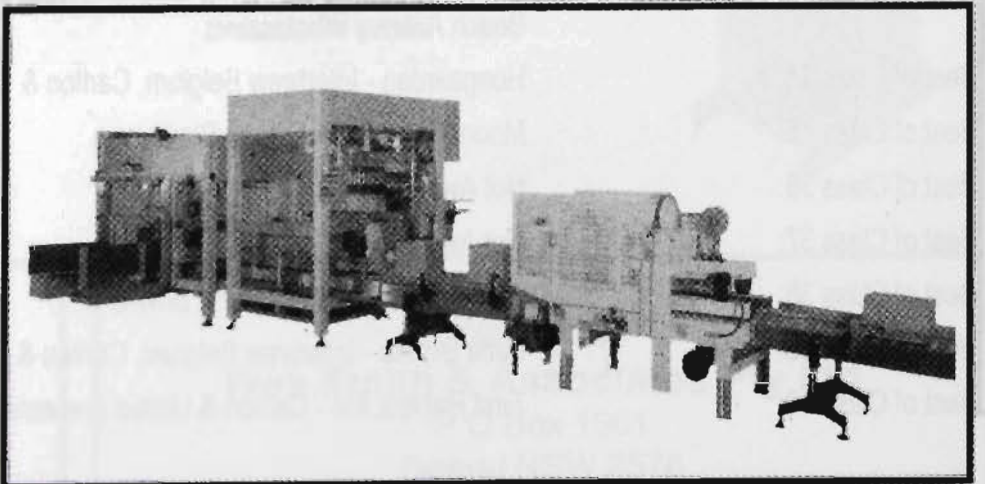
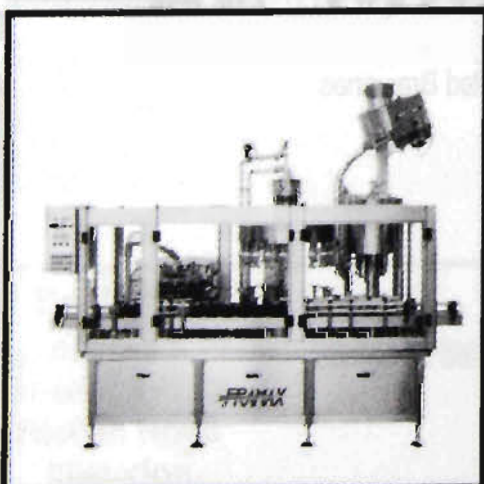
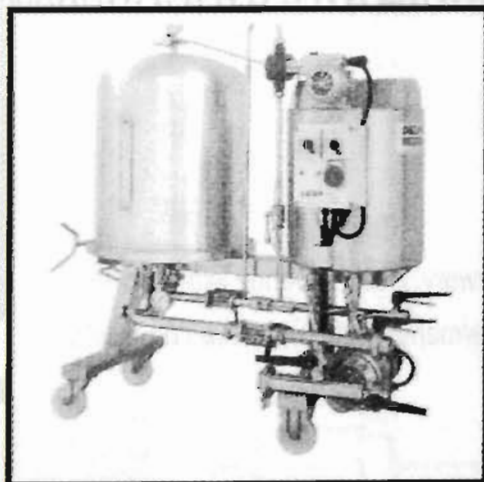
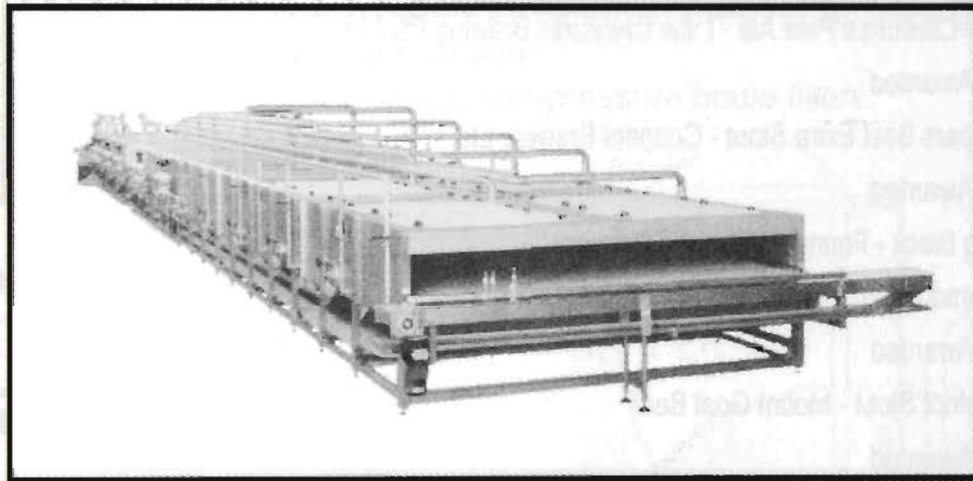
BEST OF CLASS WINNERS

Best of Class 1:	Samuel Adams Double Bock - Boston Beer Company
Best of Class 2:	Little Creatures Pale Ale - Little Creatures Brewing Pty Ltd
Best of Class 3:	Not Awarded
Best of Class 4:	Rogue Imperial Stout - Rogue Ales
Best of Class 5:	Stella Artois - Interbrew Belgium, Carlton & United Breweries
Best of Class 6:	Little Creatures Pale Ale - Little Creatures Brewing Pty Ltd
Best of Class 7:	Not Awarded
Best of Class 8:	Coopers Best Extra Stout - Coopers Brewery Ltd
Best of Class 9:	West End 107 Pilsener - South Australian Brewing Co Pty Ltd
Best of Class 10:	Rogers" Amber Ale - Little Creatures Brewing Pty Ltd
Best of Class 11:	Not Awarded
Best of Class 12:	Coopers Best Extra Stout - Coopers Brewery Ltd
Best of Class 13:	Steinlager Premium Light - Lion Breweries Ltd
Best of Class 14:	Will's Pils - Bootleg Brewery
Best of Class 15:	Little Creatures Pale Ale - Little Creatures Brewing Pty Ltd
Best of Class 16:	Not Awarded
Best of Class 17:	Coopers Best Extra Stout - Coopers Brewery Ltd
Best of Class 18:	Not Awarded
Best of Class 19:	Long Black - Founders Organic Brewery
Best of Class 20:	Emerson's 1812 India Pale Ale - Emerson's Brewery
Best of Class 21:	Not Awarded
Best of Class 22:	Surefoot Stout - Mount Goat Beer
Best of Class 23:	Not Awarded
Best of Class 24:	Storm Brew - Masthead Brewing Company
Best of Class 25:	Brewers IPA - Wig & Pen Brewery & Tavern
Best of Class 26:	Not Awarded
Best of Class 27:	Not Awarded
Best of Class 28:	Not Awarded
Best of Class 29:	Clausthaler Premium Low-Alcohol - Binding Brewery, Beach Avenue Wholesalers
Best of Class 30:	Maisel Kristall Wheat Beer - Maisel Brewery (Germany), Beach Avenue Wholesalers
Best of Class 31:	Not Awarded
Best of Class 32:	Not Awarded
Best of Class 33:	La Guillotine Belgian Strong Golden Ale - The Family Brewery Huyghe (Belgium), Beach Avenue Wholesalers
Best of Class 34:	Hoegaarden - Interbrew Belgium, Carlton & United Breweries
Best of Class 35:	Moonshine - Grand Ridge Brewery
Best of Class 36:	Not Awarded
Best of Class 37:	Not Awarded
Best of Class 38:	Wheat Beer - Paddy's Bar & Brewery
Best of Class 39:	Lefte Blonde - Interbrew Belgium, Carlton & United Breweries
Best of Class 40:	First Harvest Ale - Carlton & United Breweries

For complete
Brewing
and

Packaging

Solutions



1-5 Kerr Street, Preston, Victoria, 3072
Phone: (03) 9328 1881
Fax: (03) 9484 8599

AEB
Australian Enological and Brewing Services

INTERNATIONAL SECTION – PACKAGED BEER

Class 1 - Lager

Sub - Class A European Style Lager

614	African Imports & Exports <i>Windhoek Lager – Namibia Breweries</i>	Gold
502	Beach Avenue Wholesalers <i>Hofbrauhaus Original Munich Beer – Hofbrauhaus Brewery, Germany</i>	Gold
583	Beach Avenue Wholesalers <i>Gosser Pale - Brau Union Brewery, Austria</i>	Gold
125	Simonds Farsons Cisk Pty Ltd <i>Cisk Export Premium</i>	Gold
295	Tooheys Pty Limited <i>Hahn Premium Lager</i>	Gold
330	United Breweries Ltd <i>Kingfisher Premium Lager Beer</i>	Gold
620	African Imports & Exports <i>Windhoek Light – Namibia Breweries</i>	Silver
603	African Imports & Exports <i>Windhoek Export – Namibia Breweries</i>	Silver
560	Ausfood International- Cambrew <i>Angkor Beer</i>	Silver
518	Beach Avenue Wholesalers <i>Hansa Export - Dortmunder Actien Brewery, Germany</i>	Silver
525	Beach Avenue Wholesalers <i>DAB Original - Dortmunder Actien Brewery, Germany</i>	Silver
116	Castlemaine Perkins <i>Sovereign</i>	Silver
333	Dagon Brewery Company Limited <i>Dagon Lager</i>	Silver
66	German Beverage Imports Pty Limited <i>Lowenbrau Original Bier – Lowenbrau AG, Germany</i>	Silver
420	Liquorland Pty Ltd <i>Hollandia – Bavaria N.V, Holland</i>	Silver
151	Liquorland Pty Ltd <i>Bavaria Premium- Bavaria N.V, Holland</i>	Silver
243	Mc Williams Wines Pty Ltd <i>Holsten Premium, Holsten Brauerei AG</i>	Silver
249	Shanghai Foster's Brewery Co Ltd <i>Shang Hai</i>	Silver
173	Simonds Farsons Cisk Pty Ltd <i>Cisk Lager</i>	Silver
296	Simsed Agencies & Maruetong Pty Ltd <i>Bitburger Lager – Bitburger Brewery, Germany</i>	Silver
433	Tucker Seabrook <i>Grolsch Premium Lager Crown Seal Grolsch Brewery, Netherlands</i>	Silver

9	Lion Nathan Beer & Beverages (Suzhou) Co Ltd <i>Taishuskui Light Lager</i>	Bronze
413	Rogue Ales <i>Kell's Irish Lager</i>	Bronze
403	Shanghai Foster's Brewery Co Ltd <i>Guang Ming</i>	Bronze
369	Shanghai Foster's Brewery Co Ltd <i>Cold Filtered GM</i>	Bronze
94	The Loaded Hog Brewery (Auckland) <i>Hog Gold Lager</i>	Bronze
250	United Breweries Ltd. <i>Kingfisher STRONG Premium Beer</i>	Bronze
490	Vanuatu Brewing Limited <i>Tusker Premium Lager</i>	Bronze
139	Shanghai Foster's Brewery Co Ltd <i>Fosters Lager</i>	-
158	Vanuatu Brewing Limited <i>Vanuatu Bitter</i>	-
506	Beach Avenue Wholesalers <i>DAB</i>	Withdrawn
612	San Miguel Corporation <i>San Miguel Pale Pilsen</i>	Not Received
610	San Miguel Corporation <i>San Miguel Super Dry</i>	Not Received

Sub-Class B Pilsener

587	Beach Avenue Wholesalers <i>Veltins Pilsener- Veltins Brewery, Germany</i>	Gold
501	Beach Avenue Wholesalers <i>Zipfer Pilsener - Brau Union Brewery, Austria</i>	Gold
140	Boston Beer Company <i>Samuel Adams Golden Pilsner</i>	Gold
565	Carlton & United Breweries <i>Stella Artois - Interbrew, Belgium</i>	Gold
419	Malt Shovel Brewery <i>James Squire Pilsener</i>	Gold
36	Pivovar Saris, a.s. <i>Saris Premium, Pale Lager</i>	Gold
10	Samuel Smith & Son Pty Ltd <i>Singha - Boon Rawd Brewery, Thailand</i>	Gold
533	Beach Avenue Wholesalers <i>Hofmark Herb Pilsener - Hofmark Brewery, Germany</i>	Silver
1	DB Breweries Limited (Waitemata) <i>Monteith's Pilsener</i>	Silver
83	Lion Nathan Beer & Beverages (Suzhou) Co Ltd <i>Taihusui 11 Pilsener</i>	Silver
266	Lion Nathan Beer & Beverages (Suzhou) Co Ltd <i>Steinlager 11 Pilsener</i>	Silver
201	Lion Nathan Beer & Beverages (Suzhou) Co Ltd <i>Becks 11.2 Pilsener</i>	Silver

Class 2 - Ale

35	Lion Nathan Beer & Beverages (Suzhou) Co Ltd <i>Rheineck 11.5 Pilsener</i>	Silver
Sub-Class C Dark Lager		
509	Beach Avenue Wholesalers <i>Bemauer Schwarzbier - Berliner Burgerbrau, Germany</i>	Gold
181	Pivovar Saris, a.s. <i>Saris. Dark Lager</i>	Bronze
44	The Loaded Hog Brewery (Auckland) <i>Hog Draft Beer</i>	-
Sub-Class D Other		
18	Boston Beer Company <i>Samuel Adams Boston Lager</i>	Gold
237	Boston Beer Company <i>Samuel Adams Boston Lager</i>	Gold
210	Boston Beer Company <i>Samuel Adams Boston Lager</i>	Gold
240	Boston Beer Company <i>Samuel Adams Boston Lager</i>	Gold
351	Boston Beer Company <i>Samuel Adams Winter Lager</i>	Gold
120	Boston Beer Company <i>Samuel Adams Double Bock</i>	Gold
305	Boston Beer Company <i>Samuel Adams Winter Lager</i>	Gold
87	Boston Beer Company <i>Samuel Adams Boston Lager</i>	Gold
23	Boston Beer Company <i>Samuel Adams Light</i>	Silver
260	Boston Beer Company <i>Samuel Adams Oktoberfest</i>	Silver
536	Carlton & United Breweries <i>Asahi Super Dry - Asahi Breweries Ltd, Japan</i>	Silver
111	Oriental Brewery <i>Cafri Light</i>	Silver
162	Oriental Brewery <i>Cass Lager</i>	Bronze
453	Oriental Brewery <i>OB Lager (Kwangju)</i>	Bronze
89	Oriental Brewery <i>Red Rock Beer</i>	Bronze
157	Oriental Brewery <i>OB Lager (Icheon)</i>	Not Received

Sub-Class A British Style Pale Ale		
122	Coopers Brewery Ltd <i>Coopers Original Pale Ale</i>	Gold
361	J Boag & Son Brewing Limited <i>Boag's 1881 Traditional Pale Ale</i>	Gold
289	Boston Beer Company <i>Samuel Adams Pale Ale</i>	Silver
487	Simonds Farsons Cisk Pty Ltd <i>Hopleaf Pale Ale</i>	Silver
88	Simonds Farsons Cisk Pty Ltd <i>Blue Label Ale</i>	Silver
102	Coopers Brewery Ltd <i>Coopers Premium Ale</i>	Bronze
470	Coopers Brewery Ltd <i>Thomas Cooper Finest Export Ale</i>	Bronze
Sub-Class B American Style Pale Ale		
63	Little Creatures Brewing Pty Ltd <i>Little Creatures Pale Ale</i>	Gold
410	Rogue Ales <i>Yellow Snow Ale</i>	Bronze
471	Boston Beer Company <i>Oregon IPA</i>	-
Sub-Class C India Pale Ale		
241	Boston Beer Company <i>Samuel Adams IPA</i>	Silver
370	Malt Shovel Brewery <i>James Squire India Pale Ale</i>	Silver
Sub-Class D Amber Ale		
107	Little Creatures Brewing Pty Ltd <i>Rogers' Amber Ale</i>	Gold
233	Rogue Ales <i>American Amber</i>	Silver
352	Rogue Ales <i>St. Rogue Red</i>	Silver
459	Tucker Seabrook <i>Grolsch Amber Ale - Grolsch Brewery, Netherlands</i>	Bronze
Sub-Class E Dark Ale		
339	Coopers Brewery Ltd <i>Coopers Dark Ale</i>	Silver
172	The Loaded Hog Brewery (Auckland) <i>Hog Dark Ale</i>	Silver
14	Boston Beer Company <i>Samuel Adams Boston Ale</i>	Bronze
Sub-Class F Other		
216	Coopers Brewery Ltd <i>Coopers Sparkling Ale</i>	Gold
104	Boston Beer Company <i>Samuel Adams Spring Ale</i>	Silver
265	Boston Beer Company <i>Samuel Adams Spring Ale</i>	Silver

INTERNATIONAL SECTION - DRAUGHT

432	DB Breweries Limited (Waitemata) <i>Monteith's Saison Biere</i>	Silver
328	Rogue Ales <i>Hazelnut Brown Nectar</i>	Bronze
69	Rogue Ales <i>Buckwheat Ale</i>	Bronze
192	Rogue Ales <i>Oregon Golden Ale</i>	Bronze
223	Rogue Ales <i>Old Crustacean Barleywine</i>	Bronze

Class 3 - Porter

278	Malt Shovel Brewery <i>James Squire Porter</i>	Silver
200	Boston Beer Company <i>Samuel Adams Honey Porter</i>	Bronze
219	Rogue Ales <i>Mocha Porter</i>	Bronze

Class 4 - Stout

Sub-Class A Dry

38	Coopers Brewery Ltd <i>Coopers Best Extra Stout</i>	Gold
188	Rogue Ales <i>Shakespeare Stout</i>	Silver
434	Vanuatu Brewing Limited <i>Southern Cross Stout</i>	Silver

Sub-Class B Sweet

515	Ausfood International- Cambrew <i>Black Panther Beer</i>	Silver
256	Boston Beer Company <i>Samuel Adams Cream Stout</i>	Silver

Sub-Class C Imperial

473	Rogue Ales <i>Rogue Imperial Stout</i>	Gold
144	South Australian Brewing Co Pty Ltd <i>Southwark Old Stout</i>	Silver

Class 5 - Lager

Sub-Class A European Style Lager

435	German Beverage Imports Pty Limited <i>Lowenbrau Original Bier- Lowenbrau AG, Germany</i>	Silver
251	Harringtons Brewery (Christchurch) <i>Finest Lager</i>	Silver
492	Coopers Brewery Ltd <i>Coopers Draught</i>	Bronze

Sub-Class B Pilsener

559	Carlton & United Breweries <i>Stella Artois - Interbrew, Belgium</i>	Gold
85	Little Creatures Brewing Pty Ltd <i>Little Creatures Pilsener</i>	Silver

Class 6 - Ale

Sub-Class A British Style Pale Ale

484	Coopers Brewery Ltd <i>Coopers Pale Ale</i>	Bronze
-----	-------------------------------------------------------	--------

Sub-Class B American Style Pale Ale

161	Little Creatures Brewing Pty Ltd <i>Little Creatures Pale Ale</i>	Gold
-----	-----------------------------------------------------------------------------	------

Sub-Class D Amber Ale

88	Little Creatures Brewing Pty Ltd <i>Rogers' Amber Ale</i>	Gold
426	DB Breweries Limited (Waitemata) <i>Monteith's Celtic Red</i>	Bronze

Sub-Class E Other

270	DB Breweries Limited (Waitemata) <i>Monteith's Black Beer</i>	Silver
-----	-------------------------------------------------------------------------	--------

Sub-Class F Other

336	Coopers Brewery Ltd <i>Coopers Sparkling Ale</i>	Bronze
-----	------------------------------------------------------------	--------

Class 7 - Porter

No Entries in this Class

Class 8 - Stout

Sub-Class A Dry

34	Coopers Brewery Ltd <i>Coopers Best Extra Stout</i>	Gold
----	---------------------------------------------------------------	------

AUSTRALASIAN SECTION – PACKAGED BEER

Class 9 - Lager

Sub-Class A Australian Style Lager

474	Castlemaine Perkins	Gold
	<i>XXXX Bitter</i>	
141	J Boag & Son Brewing Limited	Gold
	<i>Boag's Draught</i>	
344	Mac's Brewery	Gold
	<i>Mac's Gold</i>	
267	South Australian Brewing Co Pty Ltd	Gold
	<i>West End 107 Pilsener</i>	
209	Castlemaine Perkins	Silver
	<i>Sovereign</i>	
331	DB Breweries Limited (Waitemata)	Silver
	<i>Monteith's Golden Lager</i>	
271	J Boag & Son Brewing Limited	Silver
	<i>J Boag's Premium Lager</i>	
238	J Boag & Son Brewing Limited	Silver
	<i>Boag's Strong Arm Bitter</i>	
53	Liquorland Pty Ltd	Silver
	<i>Tasman Bitter Beer</i>	
457	Mac's Brewery	Silver
	<i>Nelson Reserve</i>	
235	South Australian Brewing Co Pty Ltd	Silver
	<i>Southwark Premium Lager</i>	

Sub-Class B European Style Lager

430	Tooheys Pty Limited	Gold
	<i>Hahn Premium Lager</i>	
391	Stockade Brewery Pty Ltd	Silver
	<i>Stockade Premium Lager</i>	
465	The Swan Brewery	Silver
	<i>Swan Draught</i>	
129	The Swan Brewery	Silver
	<i>Emu Bitter</i>	
163	Tooheys Pty Limited	Silver
	<i>Tooheys New</i>	
262	Tooheys Pty Limited	Silver
	<i>Tooheys Maxim</i>	
264	Tooheys Pty Limited	Bronze
	<i>Hahn Premium Light</i>	
442	Vanuatu Brewing Limited	Bronze
	<i>Tucker Premium Lager</i>	
217	The Swan Brewery	-
	<i>Swan Mid</i>	
394	Vanuatu Brewing Limited	-
	<i>Vanuatu Bitter</i>	

Sub-Class C Pilsener

475	Malt Shovel Brewery	Gold
	<i>James Squire Pilsener</i>	

408	DB Breweries Limited (Waitemata)	Silver
	<i>Monteith's Pilsener</i>	
106	Grand Ridge Brewery	Silver
	<i>Brewers</i>	
379	Masthead Brewing Company	Silver
	<i>Bohemian Pilsner</i>	

Sub-Class D Dark Lager

348	Mac's Brewery	Gold
	<i>Black Mac</i>	

Sub-Class E Other

133	South Australian Brewing Co Pty Ltd	Bronze
	<i>Southwark White Beer</i>	

Class 10 - Ale

Sub-Class A British Style Pale Ale

207	J Boag & Son Brewing Limited	Gold
	<i>Boag's 1881 Traditional Pale Ale</i>	
412	Coopers Brewery Ltd	Silver
	<i>Coopers Premium Ale</i>	
360	DB Breweries Limited (Waitemata)	Silver
	<i>Monteith's Original Ale</i>	
581	Burke's Brewing Company	Bronze
	<i>Burke's Hemp Filtered Beer</i>	
380	Coopers Brewery Ltd	Bronze
	<i>Thomas Cooper Finest Export Ale</i>	
485	Grand Ridge Brewery	Bronze
	<i>Gippsland Gold</i>	

Sub-Class B American Style Pale Ale

375	Little Creatures Brewing Pty Ltd	Gold
	<i>Little Creatures Pale Ale</i>	

Sub-Class C India Pale Ale

373	Malt Shovel Brewery	Gold
	<i>James Squire India Pale Ale</i>	
436	Mac's Brewery	Silver
	<i>Mac's Copperhop Ale</i>	
356	Holgate Brewhouse Pty Ltd	Bronze
	<i>Old Pale Ale</i>	

Sub-Class D Amber Ale

500	Little Creatures Brewing Pty Ltd	Gold
	<i>Rogers' Amber Ale</i>	
381	DB Breweries Limited (Waitemata)	Bronze
	<i>Monteith's Celtic Red Beer</i>	

Sub-Class E Dark Ale

77	Coopers Brewery Ltd	Silver
	<i>Coopers Dark Ale</i>	
318	DB Breweries Limited (Waitemata)	Silver
	<i>Monteith's Black Beer</i>	
386	Tooheys Pty Limited	Silver
	<i>Tooheys Old</i>	

AUSTRALASIAN SECTION - DRAUGHT

588	Grand Ridge Brewery <i>Supershine</i>	Bronze
556	Grand Ridge Brewery <i>Moonshine</i>	Bronze
357	Grand Ridge Brewery <i>Black & Tan</i>	Bronze

Sub-Class F Other

284	Coopers Brewery Ltd <i>Coopers Sparkling Ale</i>	Silver
156	Coopers Brewery Ltd <i>Coopers Original Pale Ale</i>	Silver
555	Grand Ridge Brewery <i>Yarra Valley Gold</i>	Silver
15	Speights Brewery <i>Speights Pale Ale</i>	Silver
513	Carlton & United Breweries <i>First Harvest Ale</i>	Bronze

Class 11 - Porter

345	Malt Shovel Brewery <i>James Squire Porter</i>	Silver
-----	---------------------------------------------------	--------

Class 12 - Stout

Sub-Class A Dry

285	Coopers Brewery Ltd <i>Coopers Best Extra Stout</i>	Gold
186	Castlemaine Perkins <i>Carbine Stout</i>	Silver
534	Grand Ridge Brewery <i>Hatlifter Stout</i>	Bronze
108	Vanuatu Brewing Limited <i>Southern Cross Stout</i>	Bronze

Sub-Class C Imperial

101	South Australian Brewing Co Pty Ltd <i>Southwark Old Stout</i>	Silver
-----	-------------------------------------------------------------------	--------

Class 13 - Reduced Alcohol

100	Lion Breweries Ltd <i>Steinlager Premium Light</i>	Gold
395	J Boag & Son Brewing Limited <i>Boag's Premium Light</i>	Silver
342	Castlemaine Perkins <i>Hahn Premium Light</i>	Bronze
541	Grand Ridge Brewery <i>Moonlight</i>	Bronze

Class 14 - Lager

Sub-Class B European Style Lager

229	Paddy's Bar & Brewery <i>Paddy's Lager</i>	Silver
-----	-----------------------------------------------	--------

Sub-Class C Pilsener

208	Bootleg Brewery <i>Will's Pils</i>	Gold
454	DB Breweries Limited (Waitemata) <i>Monteith's Pilsener</i>	Silver
45	Little Creatures Brewing Pty Ltd <i>Little Creatures Pilsener</i>	Silver
239	Paddy's Bar & Brewery <i>Pilsener</i>	Silver
576	Grand Ridge Brewery <i>Brewers</i>	Bronze
311	Masthead Brewing Company <i>Bohemian Pilsner</i>	Bronze

Class 15 - Ale

Sub Class A British Style Pale Ale

520	Grand Ridge Brewery <i>Gippsland Gold</i>	Bronze
124	Coopers Brewery Ltd <i>Coopers Original Pale Ale</i>	-
575	Norfolk Island Brewing Co <i>Beesting</i>	-

Sub-Class B American Style Pale Ale

493	Little Creatures Brewing Pty Ltd <i>Little Creatures Pale Ale</i>	Gold
-----	----------------------------------------------------------------------	------

Sub-Class D Amber Ale

166	Speights Brewery <i>Brewmaster's Autumn Ale</i>	Gold
6	DB Breweries Limited (Waitemata) <i>Monteith's Celtic Red</i>	Silver
366	Little Creatures Brewing Pty Ltd <i>Rogers' Amber Ale</i>	Silver

Sub-Class E Dark Ale

195	DB Breweries Limited (Waitemata) <i>Monteith's Black Beer</i>	Silver
55	Coopers Brewery Ltd <i>Coopers Dark Ale</i>	Bronze
589	Grand Ridge Brewery <i>Black and Tan</i>	Bronze
595	Grand Ridge Brewery <i>Moonshine</i>	-

Sub-Class F Other

16	Paddy's Bar & Brewery <i>Extra Special Strong Bitter Ale</i>	Silver
93	Speights Brewery <i>Speights Pale Ale</i>	Silver
526	Carlton & United Breweries <i>First Harvest Ale</i>	Bronze
324	Coopers Brewery Ltd <i>Coopers Sparkling Ale</i>	Bronze
542	Grand Ridge Brewery <i>Yarra Valley Gold</i>	-

Class 16 - Porter

No Entries in this Class

Class 17 - Stout
Sub-Class A Dry

160	Coopers Brewery Ltd <i>Coopers Best Extra Stout</i>	Gold
405	Portland Hotel <i>The Craic</i>	Silver
97	Townsville Brewing Co <i>Flanagans Dry Irish Stout</i>	Silver
519	Grand Ridge Brewery <i>Hatlifter</i>	-

Class 18 - Reduced Alcohol

563	Grand Ridge Brewery <i>Moonlight</i>	Bronze
234	J Boag & Son Brewing Limited <i>Boag's Premium Light</i>	Bronze

**SMALL BREWERY SECTION –
PACKAGED BEER**
Class 19 - Lager
Sub-Class A Australian Style Lager

143	Masthead Brewing Company <i>Beez Neez</i>	Bronze
128	Masthead Brewing Company <i>Bohemian Pilsner</i>	Bronze
303	Inchant Brewing Company Pty Ltd <i>Bullant Lager</i>	-
58	The Loaded Hog Brewery (Christchurch) <i>Hog Gold Lager</i>	-
293	Wanaka Beerworks Ltd <i>Cardrona Gold</i>	-
429	Masthead Brewing Company <i>Storm Brew</i>	Not Received

Sub-Class B European Style Lager

449	Founders Organic Brewery <i>Tall Blonde</i>	Silver
70	Stockade Brewery Pty Ltd <i>Stockade Premium Lager</i>	Silver
46	Royal Beer Co. Ltd. <i>Royal All Malt Premium Beer</i>	-
4	Royal Beer Co. Ltd. <i>Ikale Export Beer</i>	-

Sub-Class C Pilsener

287	Emerson's Brewery <i>Emerson's Organic Pilsener</i>	Gold
40	Bootleg Brewery <i>Will's Pils</i>	Silver
194	Lighthouse Brewery <i>Tasman Bay Pilsener</i>	Silver
47	Masthead Brewing Company <i>Bohemian Pilsner</i>	Silver
84	Wanaka Beerworks Ltd <i>Brewski</i>	Silver
578	Grand Ridge Brewery <i>Brewers</i>	Bronze

Sub-Class D Dark Lager

105	Founders Organic Brewery <i>Long Black</i>	Gold
401	The Loaded Hog Brewery (Christchurch) <i>Hog Draft</i>	-
489	Wanaka Beerworks Ltd <i>Tall Black</i>	-

Sub-Class E Other

114	Founders Organic Brewery <i>Red Head</i>	Silver
137	Masthead Brewing Company <i>Storm Brew</i>	Not Received

Class 20 - Ale

Sub-Class A British Style Pale Ale

591	Grand Ridge Brewery <i>Gippsland Gold</i>	Bronze
232	Holgate Brewhouse Pty Ltd <i>Old Pale Ale</i>	Bronze
29	Wanaka Beerworks Ltd <i>Spitfire</i>	Bronze

Sub-Class B American Style Pale Ale

347	Holgate Brewhouse Pty Ltd <i>Mt Macedon Ale</i>	Silver
377	Emerson's Brewery <i>Emerson's Maris Gold</i>	Bronze
483	Masthead Brewing Company <i>Alpha Pale Ale</i>	Bronze
409	Mountain Goat Beer <i>Pale Ale</i>	Bronze

Sub-Class C India Pale Ale

469	Emerson's Brewery <i>Emerson's 1812 India Pale Ale</i>	Gold
599	Yarra Flats Brewery Pty Ltd (Trading as Buckley's Beer) <i>Buckley's Original Ale</i>	Gold

Sub-Class D Amber Ale

197	Masthead Brewing Company <i>Tawny Ale</i>	Silver
532	Eumundi Country Brewhouse <i>Eumundi 110</i>	Bronze
56	Mountain Goat Beer <i>Hightail Ale</i>	Bronze
577	Eumundi Country Brewhouse <i>Eumundi Country Brewhouse Strong Ale</i>	-
225	Inchant Brewing Company Pty Ltd <i>Bullant Bitter Ale</i>	-

Sub-Class E Dark Ale

464	Bootleg Brewery <i>Raging Bull Dark Ale</i>	Silver
458	Bootleg Brewery <i>Tom's Brown Dark Ale</i>	Silver
538	Grand Ridge Brewery <i>Moonshine</i>	Bronze
552	Grand Ridge Brewery <i>Supershine</i>	Bronze
600	Grand Ridge Brewery <i>Black and Tan</i>	Bronze
327	Holgate Brewhouse Pty Ltd <i>Winter Dark Ale</i>	Bronze
248	Inchant Brewing Company Pty Ltd <i>Thomas Jecks</i>	Bronze
482	Jamieson Brewery <i>Jamieson Brown Ale</i>	Bronze
127	Lighthouse Brewery <i>Dicks Dark Ale</i>	Bronze

497	Masthead Brewing Company <i>Tawny Ale</i>	Bronze
96	Masthead Brewing Company <i>Masthead Strong Ale</i>	Bronze
467	The Loaded Hog Brewery (Christchurch) <i>Hog Dark Ale</i>	-

Sub-Class F Other

523	Yarra Flats Brewery Pty Ltd (Trading as Buckley's Beer) <i>Buckley's Bitter</i>	Silver
516	Grand Ridge Brewery <i>Yarra Valley Gold</i>	Bronze

Class 21 - Porter

170	Emerson's Brewery <i>Emerson's London Porter</i>	Silver
314	Inchant Brewing Company Pty Ltd <i>Guildford Porter</i>	-

Class 22 - Stout

Sub-Class A Dry

19	Bootleg Brewery <i>Bootleg Stout Dry</i>	Bronze
571	Grand Ridge Brewery <i>Halllifter</i>	Bronze

Sub-Class B Sweet

367	Mountain Goat Beer <i>Surefoot Stout</i>	Gold
325	Lighthouse Brewery <i>Classic Stout</i>	Bronze

Sub-Class C Imperial

531	Eumundi Country Brewhouse <i>Eumundi Country Brewhouse Extra Stout</i>	Silver
-----	---------------------------------------------------------------------------	--------

Class 23 - Reduced Alcohol

511	Grand Ridge Brewery <i>Moonlight</i>	Silver
185	Bootleg Brewery <i>Amber Light</i>	Bronze
57	Inchant Brewing Company Pty Ltd <i>Bullant Premium Mild</i>	-

SMALL BREWERY SECTION - DRAUGHT

Class 24 - Lager

Sub-Class A Australian Style Lager

115	Masthead Brewing Company	Silver
	<i>Storm Brew</i>	
12	Masthead Brewing Company	Silver
	<i>Bohemian Pilsner</i>	
428	Townsville Brewing Co	Silver
	<i>Townsville Bitter</i>	
176	Masthead Brewing Company	Bronze
	<i>Beez Neez</i>	
510	Gold Coast Brewpub	-
	<i>Queensland Bitter</i>	
246	Rifle Brigade Pub Brewery	-
	<i>Rifle Lager</i>	

Sub-Class B European Style Lager

244	Sail and Anchor Pub Brewery	Gold
	<i>Harbour Lager</i>	
50	Paddy's Bar & Brewery	Bronze
	<i>Lager</i>	
568	Gold Coast Brewpub	-
	<i>Lifesaver Lager</i>	
21	Rifle Brigade Pub Brewery	-
	<i>Bullion Lager</i>	
301	Founders Organic Brewery	Withdrawn
	<i>Tall Blonde</i>	

Sub-Class C Pilsener

30	Bootleg Brewery	Silver
	<i>Will's Pils</i>	
364	Wig & Pen Brewery & Tavern	Silver
	<i>Kiandra Gold Pilsener</i>	
548	Harringtons Breweries (Nelson)	Bronze
	<i>Tasman Lager</i>	
472	Masthead Brewing Company	Bronze
	<i>Bohemian Pilsner</i>	
427	Paddy's Bar & Brewery	Bronze
	<i>Pilsener</i>	
543	Grand Ridge Brewery	-
	<i>Brewers</i>	
508	Harringtons Breweries (Nelson)	-
	<i>Finest Lager</i>	
596	Harringtons Breweries (Nelson)	-
	<i>Boulder Bank</i>	
544	Outback Brewery	-
	<i>Outback Pilsener</i>	

Sub-Class D Dark Lager

424	Founders Organic Brewery	Gold
	<i>Long Black</i>	
222	P H Woods Brewery	Bronze
	<i>Blackfin Lager</i>	
491	Gunn Island Brewing Co	-
	<i>Shot Fox Red Beer</i>	
387	Rifle Brigade Pub Brewery	-
	<i>Old Fashioned Bitter</i>	

Sub-Class E Other

498	Masthead Brewing Company	Gold
	<i>Storm Brew</i>	
228	P H Woods Brewery	Gold
	<i>My-Oh-Maibock</i>	
224	Founders Organic Brewery	Bronze
	<i>Redhead</i>	
37	P H Woods Brewery	Bronze
	<i>Minderella's Marzen</i>	
205	St Peters	Bronze
	<i>Blonde Premium</i>	

Class 25 - Ale

Sub-Class A British Style Pale Ale

227	Harringtons Brewery (Christchurch)	Silver
	<i>Best Bitter</i>	
5	Holgate Brewhouse Pty Ltd	Silver
	<i>Old Pale Ale</i>	
252	Bells Hotel & Brewery	Bronze
	<i>Best Bitter</i>	
561	Grand Ridge Brewery	Bronze
	<i>Gippsland Gold</i>	
570	Harringtons Breweries (Nelson)	Bronze
	<i>Canterbury Pale Ale</i>	
22	Portland Hotel	Bronze
	<i>Portland Pale</i>	
389	Townsville Brewing Co	Bronze
	<i>Diggers Pale Ale</i>	
189	Auroras Brewery & Brasserie	-
	<i>Auroras Pale Ale</i>	
524	Norfolk Island Brewing Co	-
	<i>Beesting</i>	

Sub-Class B American Style Pale Ale

390	Holgate Brewhouse Pty Ltd	Bronze
	<i>Mt Macedon Ale</i>	
17	Masthead Brewing Company	Bronze
	<i>Alpha Pale Ale</i>	
230	Mountain Goat Beer	Bronze
	<i>Pale Ale</i>	
334	Portland Hotel	Bronze
	<i>American Pool Ale</i>	
298	Wig & Pen Brewery & Tavern	Bronze
	<i>Wig & Pen Pale Ale</i>	

Sub-Class C India Pale Ale

282	Wig & Pen Brewery & Tavern <i>Brewers IPA</i>	Gold
496	Gunn Island Brewing Co <i>Cut Snake Pale Ale</i>	Bronze
582	Outback Brewery <i>Outback Pale Ale</i>	-

Sub-Class D Amber Ale

112	Gunn Island Brewing Co <i>Ducks Nuts Amber Ale</i>	Silver
175	Mountain Goat Beer <i>Hightail Ale</i>	Silver
539	Harringtons Breweries (Nelson) <i>Boulder Bank Draught</i>	Bronze
503	Harringtons Breweries (Nelson) <i>Best Bitter</i>	Bronze
155	Jamieson Brewery <i>Jamiesons Sparkling Ale</i>	-
190	Jamieson Brewery <i>Jamieson Brown Ale</i>	-
462	Masthead Brewing Company <i>Tawny Ale</i>	-
573	Outback Brewery <i>Outback Ale</i>	-

Sub-Class E Dark Ale

452	Bootleg Brewery <i>Tom's Brown</i>	Bronze
562	Eumundi Country Brewhouse <i>Eumundi Country Dark Ale</i>	Bronze
512	Grand Ridge Brewery <i>Black and Tan</i>	Bronze
594	Harringtons Breweries (Nelson) <i>Boulder Bank Dark</i>	Bronze
147	The Lord Nelson Brewery Hotel <i>Old Admiral Stong Ale</i>	Bronze
39	Auroras Brewery & Brasserie <i>Auroras Dark Ale</i>	-
572	Grand Ridge Brewery <i>Moonshine</i>	-
400	Masthead Brewing Company <i>Tawny Ale</i>	-
354	Port Dock Brewery Hotel <i>Black Diamond Bitter</i>	-
148	The Lord Nelson Brewery Hotel <i>Victory Bitter</i>	-
450	Wig & Pen Brewery & Tavern <i>Ballyragget Irish Red</i>	-
43	Bootleg Brewery <i>Raging Bull</i>	Withdrawn

Sub-Class F Other

290	Townsville Brewing Co <i>Neds Red Irish Ale</i>	Silver
-----	----------------------------------------------------	--------

323	Paddy's Bar & Brewery <i>Extra Special Strong Bitter Ale</i>	Silver
60	Sail and Anchor Pub Brewery <i>Extra Special Bitter</i>	Silver
171	Wig & Pen Brewery & Tavern <i>Smiths Special Bitter</i>	Silver
383	Wig & Pen Brewery & Tavern <i>Kamberra Kolsch</i>	Silver
121	Bells Hotel & Brewery <i>Real Ale</i>	Bronze
553	Grand Ridge Brewery <i>Yarra Valley Gold</i>	Bronze
554	Nail Brewing Australia <i>Nail Ale</i>	Bronze
504	Gold Coast Brewpub <i>Gold Coast Honey Pale Ale</i>	-
549	Gunn Island Brewing Co <i>Mothers Milk</i>	-
416	Steam Packet Brewing Company <i>Amber Ale</i>	-
446	The Lord Nelson Brewery Hotel <i>3 Sheets</i>	-
184	Wig & Pen Brewery & Tavern <i>RP's Creamy Ale Irish Red</i>	-

Class 26 - Porter

546	Gold Coast Brewpub <i>Queensland Black Ale</i>	-
316	Wig & Pen Brewery & Tavern <i>Pass Porter</i>	Silver
179	Bells Hotel & Brewery <i>Porter</i>	Bronze
547	Harringtons Breweries (Nelson) <i>Wobbly Boot Porter</i>	Bronze
73	Steam Packet Brewing Company <i>Stoker Ale</i>	Bronze

Class 27 - Stout
Sub-Class A Dry

514	Harringtons Breweries (Nelson) <i>Stout</i>	-
75	Portland Hotel <i>The Craic</i>	Silver
294	Bells Hotel & Brewery <i>Irish Stout</i>	Bronze
359	Bootleg Brewery <i>Bootleg Stout</i>	Bronze

343 Townsville Brewing Co
Flanagans Dry Irish Stout Bronze

402 Wig & Pen Brewery & Tavern
Velvet Cream Stout Bronze

535 Grand Ridge Brewery
Hatlifter -

580 Outback Brewery
Outback Stout Withdrawn

B Sweet

123 Port Dock Brewery Hotel
Black Bart Milk Stout Bronze

417 Sail and Anchor Pub Brewery
Brass Monkey Stout Bronze

Class 28 - Reduced Alcohol

62 Auroras Brewery & Brasserie
Auroras Mid Bitter Bronze

551 Grand Ridge Brewery
Moonlight Bronze

182 Bootleg Brewery
Amber Light -

**SPECIALTY SECTION –
PACKAGED BEER**

Class 29 - Low Alcohol

557 Beach Avenue Wholesalers
Clausthaler Premium Low-Alc - Gold

Binding Brewery, Germany

131 Coopers Brewery Ltd
Coopers Birell LAB Bronze

Class 30 - Wheat Beer

Sub-Class A Wheat

590 Beach Avenue Wholesalers
Schofferhofer Hefeweizen - Binding Brewery, Gold

Germany

313 The Loaded Hog Brewery (Auckland)
Hog Wheat Beer Gold

117 The Loaded Hog Brewery (Christchurch)
Hog Wheat Silver

164 Masthead Brewing Company
Beez Neez Bronze

398 Boston Beer Company
Samuel Adams Summer Ale -

Sub-Class B German Style Kristal

558 Beach Avenue Wholesalers
Maisel Kristall Wheat Beer - Maisel Brewery, Gold

Germany

619 German Beverage Imports Pty Limited
Franziskaner Weissbier Kristallklar Gold

Spaten – Franziskaner Brau, Munich, Germany

569 Beach Avenue Wholesalers
Schofferhofer Kristallweizen - Binding Brewery, Silver

Germany

259 Simsed Agencies & Maruotong Pty Ltd
Erdinger Kristallklar - Erdinger Brewery, -

Germany

Sub-Class C German Style Hefeweizen

528 Beach Avenue Wholesalers
Edelweiss Hefeweizen - Brau Union Brewery, Austria Gold

527 Beach Avenue Wholesalers
Maisel Hefeweizen - Maisel Brewery, Germany Silver

150 Boston Beer Company
Samuel Adams Weiss Bier Silver

254 Bootleg Brewery
Sou'West Wheat Bronze

505 F.M. Liquor Pty Ltd
Hofbrau Munchen Weissbier, Hofbrauhaus Bronze
Brewery Munich, Germany

276	German Beverage Imports Pty Limited <i>FranziskanerHefe Weissbier Hell</i> <i>Spaten – Franziskaner Brau, Munich, Germany</i>	Bronze
142	Masthead Brewing Company <i>Naked Ale</i>	Bronze
279	Simsed Agencies & Maruetong Pty Ltd <i>Erdinger Wheat Beer - Erdinger Brewery,</i> <i>Germany</i>	-

Sub-Class D German Style Dark/Dunkel

517	Beach Avenue Wholesalers <i>Edelweiss Dark Wheat Beer - Brau Union</i> <i>Brewery, Austria</i>	Bronze
605	German Beverage Imports Pty Limited <i>Franziskanaer Weissbier Dunkel</i> <i>Spaten – Franziskaner Brau, Munich, Germany</i>	Bronze
196	Simsed Agencies & Maruetong Pty Ltd <i>Erdinger Dunkel -Erdinger Brewery,</i> <i>Germany</i>	-
7	Simsed Agencies & Maruetong Pty Ltd <i>Erdinger Weizenbock – Erdinger Brewery,</i> <i>Germany</i>	-

Class 31 - Herb & Spice Beers

292	Mac's Brewery <i>Blonde Mac</i>	Silver
443	Boston Beer Company <i>Samuel Adams Old Fezziwig</i>	Bronze
315	Inchant Brewing Company Pty Ltd <i>Midland Fettle</i>	Bronze

Class 32 - Fruit Beers

564	Eumundi Country Brewhouse <i>Eumundi Red</i>	-
145	Boston Beer Company <i>Samuel Adams Cherry Wheat</i>	Bronze
448	Boston Beer Company <i>Samuel Adams Cranberry Lambic</i>	Bronze

Class 33 - Belgian and French Style Ales
Sub-Class A Strong Golden Ale

567	Beach Avenue Wholesalers <i>La Guillotine Belgian Strong Golden Ale –</i> <i>The Family Brewery Huyghe, Belgium</i>	Gold
597	Beach Avenue Wholesalers <i>La Chouffe Strong Golden Ale - Brasserie</i> <i>d'Achouffe, Belgium</i>	Silver

479	Simsed Agencies & Maruetong Pty Ltd <i>Duvel Moortgat – Duvel Moortgat NV, Belgium</i>	Silver
-----	------------------------------------------------------------------------------------------------------	--------

Sub-Class B Tripel

593	Beach Avenue Wholesalers <i>Artevelde Grand Cru - The Family Brewery</i> <i>Huyghe, Belgium</i>	Silver
579	Beach Avenue Wholesalers <i>Mc Chouffe Belgian Beer - Brasserie d'Achouffe,</i> <i>Belgium</i>	Silver

Sub-Class D Abbey Style

291	Simsed Agencies & Maruetong Pty Ltd <i>Bieres de Chimay White (Tripel) - Bieres de Chimay S.A.</i> <i>Belgium</i>	Silver
309	Simsed Agencies & Maruetong Pty Ltd <i>Bieres de Chimay Blue - Bieres de Chimay S.A., Belgium</i>	Silver
422	Simsed Agencies & Maruetong Pty Ltd <i>Bieres de Chimay Red - Bieres de Chimay S.A.</i> <i>Belgium</i>	Silver

Sub-Class E Kreiks

607	Carlton & United Breweries <i>BelleVue Kriek</i>	Gold
-----	----------------------------------------------------------------	------

Sub-Class F Saison

149	DB Breweries Limited (Waitemata) <i>Monteith's Saison Biere</i>	Silver
-----	---------------------------------------------------------------------------	--------

Class 34 - Belgian Style Witbiers

601	Carlton & United Breweries <i>Hoegaarden - Interbrew, Belgium</i>	Gold
64	Boston Beer Company <i>Samuel Adams White Ale</i>	Bronze
522	Grand Ridge Brewery <i>Natural Blonde</i>	Bronze
431	South Australian Brewing Co Pty Ltd <i>Hahn Witbier</i>	Bronze
499	Holgate Brewhouse Pty Ltd <i>White Ale</i>	-

Class 35 - Scotch Ale and Barleywines

598	Grand Ridge Brewery <i>Moonshine</i>	Gold
545	Grand Ridge Brewery <i>Supershine</i>	Silver
307	Boston Beer Company <i>Samuel Adams Scotch Ale</i>	Bronze
274	Emerson's Brewery <i>Emerson's Old '95</i>	Bronze
321	Rogue Ales <i>Old-Crustacean Barleywine</i>	Bronze

Class 36 - Experimental Beers

13	Flossmoor Station Brewing Co. <i>Imperial Eclipse Stout</i>	Bronze
32	Harringtons Brewery (Christchurch) <i>Big John Special Reserve</i>	Bronze
138	Masthead Brewing Company <i>Beez Neez</i>	Bronze
332	Rogue Ales <i>Buckwheat Ale</i>	Bronze
52	Rogue Ales <i>Hazelnut Brown Nectar</i>	Bronze
495	Boston Beer Company <i>Samuel Adams Millennium Ale</i>	-
242	Boston Beer Company <i>Samuel Adams Utopias</i>	-
167	Boston Beer Company <i>Samuel Adams Triple Bock</i>	-

SPECIALTY SECTION - DRAUGHT
Class 37 - Low Alcohol

No Entries in this Class

Class 38 - Wheat Beer
Sub-Class A Wheat

392	P H Woods Brewery <i>Desert Ale</i>	Silver
540	Harringtons Breweries (Nelson) <i>Wheat Beer</i>	Bronze
407	Masthead Brewing Company <i>Beez Neez</i>	Bronze
302	Portland Hotel <i>3weissemen</i>	Bronze
221	The Lord Nelson Brewery Hotel <i>Quayle Ale</i>	Bronze
609	Eumundi Country Brewhouse <i>Eumundi Country Brewhouse 100% Wheat</i>	-

Sub-Class B German Style Kristal

203	Paddy's Bar & Brewery <i>Wheat Beer</i>	Gold
-----	--------------------------------------------	------

Sub-Class C German Style Hefeweizen

275	Masthead Brewing Company <i>Ivory Ale</i>	Silver
76	Wig & Pen Brewery & Tavern <i>Amber Hefeweizen</i>	Silver
537	Beach Avenue Wholesalers <i>Hofbrauhaus Munich Hefeweizen - Hofbrauhaus Brewery, Germany</i>	Bronze
350	Auroras Brewery & Brasserie <i>Auroras Wheat</i>	-
365	Bootleg Brewery <i>Sou'West Wheat</i>	-

Sub-Class D German Style Dark/Dunkel

355	Jamieson Brewery <i>Dunkelweizen</i>	-
-----	-----------------------------------------	---

Class 39 - Specialty Beers
Sub-Class A Herb and Spice Beers

245	Portland Hotel <i>Number 8</i>	Bronze
507	Harringtons Breweries (Nelson) <i>First of The Summer Ale</i>	-
90	Port Dock Brewery Hotel <i>Port Dock Ginger Ale</i>	-

Sub-Class B Fruit Beers

261 P H Woods Brewery	Gold
<i>Apricot Delight</i>	
385 Auroras Brewery & Brasserie	-
<i>Auroras Raspberry Wheat</i>	
574 Harringtons Breweries (Nelson)	-
<i>Cherry Ale</i>	

Sub-Class C Belgian & French Style Ales

606 Carlton & United Breweries	Gold
<i>Lefte Blonde - Interbrew, Belgium</i>	
618 Carlton & United Breweries	Silver
<i>Lefte Brun - Interbrew, Belgium</i>	

Sub-Class D Belgian Style Witbiers

608 Carlton & United Breweries	Gold
<i>Hoegaarden - Interbrew Belgium</i>	
529 Grand Ridge Brewery	Silver
<i>Natural Blonde</i>	
152 Flossmoor Station Brewing Co.	-
<i>Le Chien Blanc</i>	

Sub-Class E Scotch Ale and Barleywines

550 Grand Ridge Brewery	Silver
<i>Moonshine</i>	

Sub-Class F Experimental Beers

130 P H Woods Brewery	Bronze
<i>Blackfin Cask Lager</i>	

PACKAGING SECTION

Class 40 - Packaging

584 Carlton & United Breweries	Gold
<i>First Harvest Ale</i>	
269 Founders Organic Brewery	Silver
<i>Gift Box</i>	
226 Stockade Brewery Pty Ltd	Silver
<i>Stockade Premium Lager</i>	

DRAUGHT BEER WITHOUT THE FROTH & BUBBLE ???

You need the complete Beer and
Refrigeration Company

COMPLETE QUALITY SERVICE
We not only:

- Manufacture, sell and install our unique brand of draught beer equipment

And:

- Supply, install and service all types of refrigeration e.g. Barrel rooms, glycol systems, ice banks and portable beer chillers.

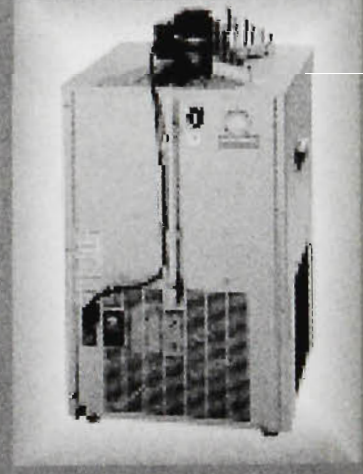
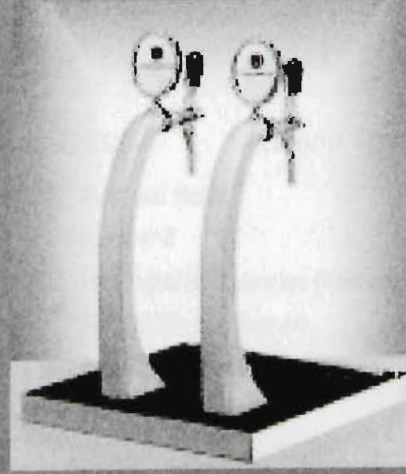
We are also:

- Sole Australian & New Zealand distributors for VIN SERVICE Italian designed Fonts, Taps, Chillers & Post Mix equipment.

But don't forget:

- We can also maintain your system to ensure consistent and reliable service.

Call us now or visit our showroom



30 VERNON AVENUE, HEIDELBERG HEIGHTS
VICTORIA 3081

TEL: (03) 9458 3488 FAX: (03) 9458 2855

Website: www.cqs.com.au



KEG SYSTEMS

Supplier to the Australasian brewing industry for kegs, keg cleaning & filling and keg dispensing equipment.

Keg Systems & Schäfer Container

Systems, as the proud suppliers of kegs

for the draught beer section of the

Australian International Beer Awards

2002, would like to thank everyone who

made this event a success yet again.

SCHÄFER
Container systems

Innovative manufacturers of high quality stainless steel and polyurethane coated kegs for the global brewing industry.

Keg Systems was established in 1995. Originating from a technical and brewing background, we started reconditioning post-mix kegs, as well as servicing and supplying dispensing equipment to the craft-brewing industry in Australia.

Today **Keg Systems** continues in the business of reconditioning, service and supply but has steadily expanded its horizons and is now the Australian and New Zealand agent for:

- **Keggy Drink Systems** which produces the innovative 5.0 and 12.5 litre keggy with integrated CO2 supply
- **Schafer Container Systems** which has a range of stainless steel and polyurethane-coated beverage containers from 5.2 litre to 50 litre
- **M+F Keg Technik** which manufactures keg cleaning and filling equipment from single machines to complete plants.

We are able to offer to the beverage industry a complete package which we feel benefits the customer, because all the products on offer are designed to work together.

At **Keg Systems**, we work with our customers as a team to develop "Practical, Cost-effective Solutions".

We supply a variety of products to various breweries and craft-brewing outlets. We can be of service to you.

Keg Systems

P.O.Box 254 Beaconsfield NSW 2014

Phone: +61 2 9319 5447

Fax: +61 2 9310 4336

Email: info@kegsystems.com

www.kegsystems.com

INDEX OF EXHIBITORS

- African Imports & Exports, PO Box 284 Glenside SA 5065 AUSTRALIA
- Auroras Brewery & Brasserie, P O Box 367 Brisbane Albert St Bc QLD 4002 AUSTRALIA
- Ausfood International- Cambrew, P O Box 222 Bendigo VIC 3552 AUSTRALIA
- Beach Avenue Wholesalers, 47 Industrial Drive, Braeside VIC 3195 AUSTRALIA
- Bells Hotel & Brewery, 157 Moray Street South Melbourne VIC 3215 AUSTRALIA
- Bootleg Brewery, Po Box 159 Dunsborough WA 6281 AUSTRALIA
- Boston Beer Company, 30 Germania Street Boston MA 02130 USA
- Burke's Brewing Company, P O Box 3019 Norman Park QLD AUSTRALIA
- Carlton & United Breweries, 77 Southbank Boulevardde Southbank VIC 3001 AUSTRALIA
- Carlton & United Breweries, 2-4 Southampton Cres Abbotsford VIC 3067 AUSTRALIA
- Castlemaine Perkins, 185 Milton Rd Milton QLD 4064 AUSTRALIA
- Coopers Brewery Ltd, 461 South Road Regency Park Adelaide SA 5942 AUSTRALIA
- Dagon Brewery Company Limited, No 585 (B) No 4, High Way Road Shwepyitha Township YANGON MYANMAR
- DB Breweries Limited (Waitemata), Po Box 22010 Otahuhu AUCKLAND NEW ZEALAND
- Emerson's Brewery, 9 Grange Street Dunedin NEW ZEALAND
- Eumundi Country Brewhouse, P O Box 197 Eumundi QLD 4562 AUSTRALIA
- F.M. Liquor Pty Ltd, 19 Dean Street Claremont WA 6010 AUSTRALIA
- Flossmoor Station Brewing Co., 1035 Sterling Ave Flossmoor ILLINIOS 60422 USA
- Founders Organic Brewery, P O Box 1489 Nelson NEW ZEALAND
- German Beverage Imports Pty Limited, 18 Argyle Street The Rocks NSW 2000 AUSTRALIA
- Gold Coast Brewpub, 3120 Gold Coast Highway Surfers Paradise QLD 4217 AUSTRALIA
- Grand Ridge Brewery, Po Box 339 Mirboo North VIC 3871 AUSTRALIA
- Gunn Island Brewing Co, 102 Canterbury Road Middle Park VIC 3206 AUSTRALIA
- Harringtons Breweries (Nelson), P O Box 3470 Richmond NELSON NEW ZEALAND
- Harringtons Brewery (Christchurch), 199 Ferry Rd Christchurch NEW ZEALAND
- Holgate Brewhouse Pty Ltd, 18 Commons Lane Woodend VIC 3442 AUSTRALIA
- Inchant Brewing Company Pty Ltd, Po Box 73 Guildford WA 6935 AUSTRALIA
- J Boag & Son Brewing Limited, 21 Shields Street (Po Box 877) Launceston TAS 7250 AUSTRALIA
- Jamieson Brewery, Eildon Road Jamieson VIC 3723 AUSTRALIA
- Lighthouse Brewery, 280 Hardy Street Nelson NEW ZEALAND
- Lion Breweries Ltd, P.O.Box 23 Auckland 1 NEW ZEALAND
- Lion Nathan Beer & Beverages (Suzhou) Co Ltd, 1 Hong Feng Road, Suzheu Industrial Park China Suzhou Industrial Park Jiangsu Province 215021 CHINA
- Liquorland Pty Ltd, Po Box 6272 110 Silverwater Rd Silverwater NSW 2128 AUSTRALIA
- Little Creatures Brewing Pty Ltd, 40 Mews Road Fremantle WA 6160 AUSTRALIAN
- Mac's Brewery, P O Box 23 AUCKLAND NEW ZEALAND
- Malt Shovel Brewery, 99 Pyrmont Bridge Road Camperdown NSW 2050 AUSTRALIA

Masthead Brewing Company, P O Box 198 Sanctuary Cove QLD 4212 AUSTRALIA
 Mc Williams Wines Pty Ltd, 68 Anzac Street Chullora NSW 2190 AUSTRALIA
 Mountain Goat Beer , 56 Crown St Richmond VIC 3121 AUSTRALIA
 Nail Brewing Australia, Po Box 610 Applecross Wa 6153 300 Murray Street Perth 6000 Perth WA 6000 AUSTRALIA
 Norfolk Island Brewing Co, 698 Douglas Drive Kingston 02899 NORFOLK ISLAND
 Oriental Brewery, 27, Shinha-1Ri, Bubal-Eup Icheon city Kyunggi-Do 467-863 KOREA
 Outback Brewery, 35 Dell Street Woodpark NSW 2164 AUSTRALIA
 P H Woods Brewery, 23060 Alessandro Boulevardde Moreno Valley CA 92553 USA
 Paddy's Bar & Brewery, 268 Parramatta Road Flemington NSW 2129 AUSTRALIA
 Pivovar Saris, a.s., Bojnicka 20 Bratislava 831 04 SLOVAK REPUBLIC
 Port Dock Brewery Hotel, 10 Todd Street Port Adelaide SA 5015 AUSTRALIA
 Portland Hotel, 147 Russell Street Melbourne VIC 2000 AUSTRALIA
 Rifle Brigade Pub Brewery, 137 View Street Bendigo VIC 3550 AUSTRALIA
 Rogue Ales, 1339 Nw Flanders Portland OR 97209 USA
 Royal Beer Co. Ltd., Small Industries Centre Private Bag 20 Nuku'alofa 0 TONGA
 Sail and Anchor Pub Brewery, 64 South Terrace Freemantle WA 6160 AUSTRALIA
 Sail and Anchor Pub Brewery, 64 South Terrace Fremantle WA 6160 AUSTRALIA
 Samuel Smith & Son Pty Ltd, Po Box 10 Angaston SA 5353 AUSTRALIA
 San Miguel Corporation, 40 San Miguel Ave Mandaluyong Metre PHILIPINES
 Shanghai Foster's Brewery Co. Ltd., 2678 Ping Liang Road, Yang Pu District, Shanghai, Shanghai 200090 CHINA
 Simonds Farsons Cisk Pty Ltd, Simonds Farsons Cisk Pty Ltd, The Brewery Mriemel BKROL MALTA
 Simsed Agencies & Maruetong Pty Ltd, Po Box 845 Pymble NSW 2073 AUSTRALIA
 South Australian Brewing Co Pty Ltd, 107 Port Road Thebarton SA 5031 AUSTRALIA
 Speights Brewery, P O Box 23 AUCKLAND NEW ZEALAND
 St Peters, 15 May Street St Peters, Sydney NSW 2000 AUSTRALIA
 Steam Packet Brewing Company, P O Box 363 Ascot Vale VIC 3032 AUSTRALIA
 Stockade Brewery Pty Ltd, 132-142 Bangholme Rd Dandenong Nth VIC 3175 AUSTRALIA
 The Loaded Hog Brewery (Auckland), 14th Level West Plaza Building 3 Albert Street Auckland NEW ZEALAND
 The Loaded Hog Brewery (Christchurch), 39 Dundas Street Christchurch NEW ZEALAND
 The Lord Nelson Brewery Hotel, 19 Kent Street The Rocks NSW 2000 AUSTRALIA
 The Swan Brewery , 25 Baile Road Canning Vale WA 6155 AUSTRALIA
 Tooheys Pty Limited, 29 Nyrang Street Lidcombe NSW 2141 AUSTRALIA
 Townsville Brewing Co, 252 Flinders Street Townsville QLD 4810 AUSTRALIA
 Tucker Seabrook, Locked Bag 5700 Botany NSW 1455 AUSTRALIA
 United Breweries Ltd., 32, 8th Main, Rmv Extension Bangalore KARNATAKA 560080 INDIA
 Vanuatu Brewing Limited, P O Box 169 Port Villa VANUATU
 Wanaka Beerworks Ltd, State Highway 6 Wanaka NEW ZEALAND
 Wig & Pen Brewery & Tavern, Canberra House Arcade Civic ACT 2600 AUSTRALIA
 Yarra Flats Brewery Pty Ltd (Trading as Buckley's Beer), P O Box 585 Ringwood VIC 3134 AUSTRALIA

INTERNATIONAL CENTRE FOR BREWING STUDIES

The International Centre for Brewing Studies, jointly managed by the University of Ballarat and Edith Cowan University is the Southern Hemispheres only specialised facility for training, research and consultancy for the malting and brewing industries.

The Centre provides accredited and non-accredited training courses unique to the AsiaPacific region including:

- Customised training programmes delivered on site or by distance education mode
- Customised training programmes delivered at the University of Ballarat or the Edith Cowan University
- Short Courses in Brewing Studies and Sensory Evaluation
- International study tours to Europe, Japan and North America
- Graduate Certificates and Graduate Diplomas in Brewing Science
- Executive Certificates and Diplomas in Brewing Studies
- Degrees in food science, hospitality management and marketing with specialised undergraduate streams in Brewing Studies
- An Undergraduate degree in Brewing at the University of Ballarat
- Post-graduate studies and research in food science, marketing, hospitality and tourism associated with brewing and micro brewing

Foundation Directors: Rob Greig - University of Ballarat
Ron Groves - Edith Cowan University

For information contact: Rob Greig: Phone: +61 417 310 998
Fax: +61 3 5327 9872
Email: r.greig@ballarat.edu.au



UNIVERSITY *of* BALLARAT



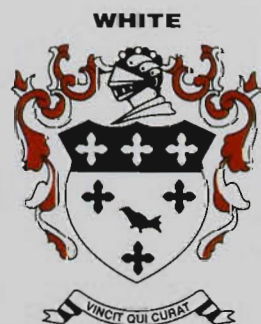
EDITH COWAN
UNIVERSITY
PERTH WESTERN AUSTRALIA



The Australian International Beer Awards gratefully acknowledges its corporate sponsors



POLYCLAR PVPP STABILIZERS



Joe White Maltings



presented by



UNIVERSITY of BALLARAT



Correspondence to:
Melbourne Showgrounds, Epsom Road, Ascot Vale Victoria 3032
Tel: 61 3 9281 7435 Fax 61 3 9376 8156
www.beerwards.com