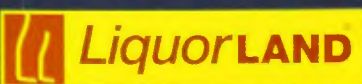


2004 CATALOGUE OF RESULTS



Proudly sponsored by



Exclusive Retail Partner

Bringing you the world's best beers...



As proud sponsor of the Australian International Beer Awards, Liquorland is delighted to help promote the best brews on Earth, to beer lovers all across Australia.

Exclusive Retail Partner



LiquorLAND

2004

Australian International Beer Awards

INDEX

Office Bearers	2
Event Organising Committee	4
Report on Entries	4
2004 JUDGING	
Grand Champions	6
2004 Judging Panel	7
Competition Classes	9
2004 RESULTS	
Trophy Awards	14
Best of Class Winners	17
International Section	20
Australasian Section	22
Small Brewery Section	25
Specialty Section	28
Packaging Section	30
Index of Exhibitors	32
Withdrawals & Not Received	40

Copyright © 2004 The Royal Agricultural Society of Victoria Limited.

This document remains the property of The Royal Agricultural Society of Victoria Limited, Melbourne Showgrounds, Epsom Road, Ascot Vale, Victoria, 3032. No part of this document may be reproduced in any form without written permission from The Royal Agricultural Society of Victoria Limited.

The Royal Agricultural Society of Victoria Limited

ACN 006 728 785

Melbourne Showgrounds, Ascot Vale, Victoria, 3032, Australia

Tel: +61 3 9281 7444 Fax: + 61 3 9372 1947

email:rasvadmin@rasv.com.au

LIST OF OFFICE BEARERS, 2004 - 2005

(as at 1/4/2004)

PATRON-IN-CHIEF

TBC

PATRON

Mr John Landy, AC, MBE

Governor of Victoria

BOARD OF DIRECTORS

J.H. Seymour (Ch)

B.E. Laws

I.I. Bucknall

C.R. Lyons

M. Carroll

G.J. Phillips

R.C.E. Cust

G.J. Sheppard

C.J. Fox

S. Spargo

PRESIDENT

J.H. Seymour

CHIEF EXECUTIVE

Stephen Carter

COMPANY SECRETARY

Adnan Mansour



joint organisers of the
Australian International

Beer Awards

Bachelor of Business (Brewing)

Graduate Certificate of Brewing

Graduate Diploma of Brewing

Bachelor of Applied Science
(Food Science and Technology)

Open Day

Ballarat Campuses

Sunday August 15 2004

Course Infoline: 1800 811 711

Email: prospective@ballarat.edu.au

www.ballarat.edu.au

EVENT ORGANISING COMMITTEE

Mr Gary Sheppard	The Royal Agricultural Society of Victoria Ltd (AIBA Chairman)
Dr Peter Aldred	The University of Ballarat (AIBA Chief Steward)
Mr Rob Greig	The University of Ballarat (AIBA Director of Judging)
Mr Peter Manders	Carlton & United Breweries Ltd (AIBA Chief Judge)
Dr Lara Wakeling	The University of Ballarat
Ms Kerry James	The Royal Agricultural Society of Victoria Ltd (AIBA Competition Co-Ordinator)

REPORT ON ENTRIES

885 entries were received from 111 breweries across 30 countries at this year's Australian International Beer Awards.

Competition Section	Number of Entries
International	164
Australasian	208
Small Brewery	301
Specialty	165
Packaging	47
Total All Sections	885

For more information regarding the Awards please contact:

Kerry James

Competition Co-ordinator

The Royal Agricultural Society of Victoria Ltd

Melbourne Showgrounds

Epsom Road

Ascot Vale Vic Australia 3032

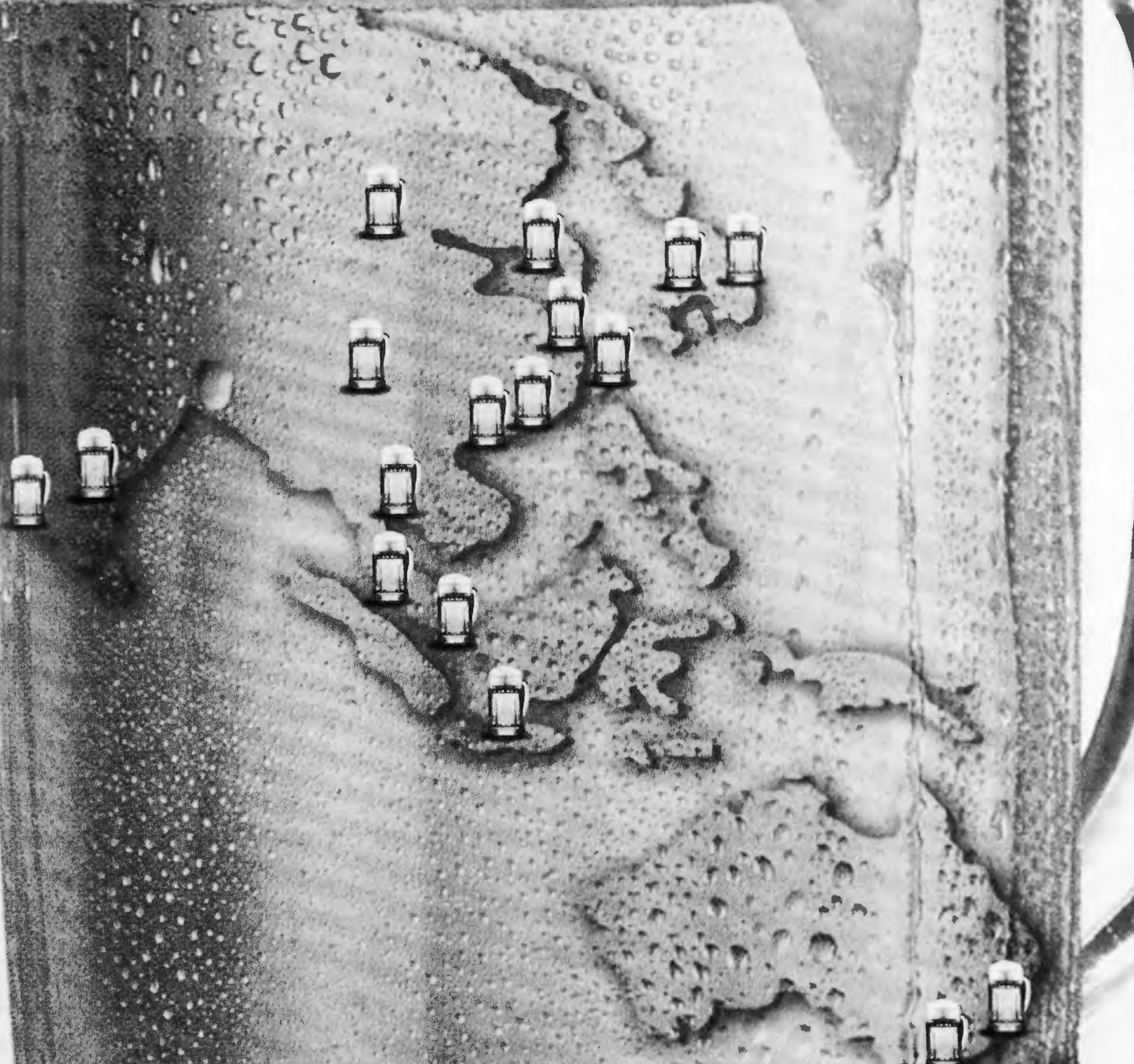
Tel: + 61 3 9281 7435

Fax: + 61 3 9376 8156

Email: kerry.james@rasv.com.au

Visit the awards website at: www.beerawards.com

POLYCLAR[®] Stabilizers



 Regional Sales Offices



POLYCLAR PVPP STABILIZERS

GRAND CHAMPIONS

2004 Pelican Pub & Brewery
India Pelican Ale



2003
Nor'wester Pale Ale
Dux de Lux, NZ



2002
Samuel Adams Double Bock
Boston Beer Company, USA



2001
Schofferhofer Kristallweizen
Binding Brauerei, Germany



2000
Hoegaarden White
Interbrew, Belgium



1999
Hahn Premium
Tooheys Pty Limited



1998
James Boags Premium Lager
J Boag & Son Limited



1997
Lion Lager
South African Breweries



1996
Carling Black Label
South African Breweries



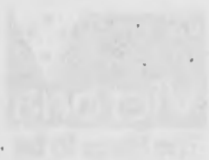
1995
Hahn Ice
Tooheys Pty Limited

1994 Coopers Best Extra Stout; Coopers Brewery Limited

1993 Redback Original Wheat Beer; Redback Brewery

2004 JUDGING PANEL

Dr Peter Aldred	Chief Steward, Australian International Beer Awards Senior Lecturer, Malting & Brewing, University of Ballarat
Mr Rob Greig	Director of Judges, Australian International Beer Awards Head, International Student Programs, University of Ballarat
Mr Peter Manders	Chief Judge, Australian International Beer Awards Master Brewer, Carlton & United Breweries Ltd
Mr Tony Duckworth	International Judge, UK
Mr Tim Bishop	J Boag & Son Brewery, Tasmania
Mr John Byron	InLine Studio, Victoria
Mr Michael Comerton	Lion Nathan, New South Wales
Mr David Davine	Carlton & United Breweries Ltd, Victoria
Mr Dave Edney	Bluetongue Brewery Pty Ltd, Victoria
Dr Roger Edwards	Co-Operative Research Centres – International Food Manufacture & Packaging Science
Mr Simon Fahey	Coopers Brewery Limited, South Australia
Mr Brennan Fielding	Balmoral Hotel, Queensland
Mr Richard Fife	Dux de Lux, New Zealand
Ms Emily Gannon	Cascade Brewery, Tasmania
Mr Chris Gatt	Cascade Brewery, Tasmania
Mr Rob Greenaway	Carlton & United Breweries Ltd, Victoria
Mr Peter Healy	Lion Nathan, New South Wales
Mr Paul Holgate	Holgate Brewhouse, Victoria
Dr Aldo Lentini	Carlton & United Breweries Ltd, Victoria
Mr Franklin Lucarotti	Tooheys Pty Limited, New South Wales
Mr Dean McLeod	Malt Shovel Brewery, New South Wales
Mr Dermot O'Donnell	Carlton & United Breweries Ltd, Victoria
Mr Tim Penton	J Boag & Son Brewery, Tasmania
Mr Jeff Potter	Tooheys Pty Limited, New South Wales
Mr Brad Rogers	Carlton & United Breweries Ltd, Victoria
Mr Helmut Stenzel	University of Ballarat, Victoria
Mr Nick Sterenberg	Coopers Brewery Limited, South Australia
Dr Roger Thompson	Tooheys Pty Limited, New South Wales
Mr Richard Watkins	Wig & Pen Brewery & Tavern, New South Wales





Premier of Victoria

1 Treasury Place
GPO Box 4912VV
Melbourne Victoria 3002
www.vic.gov.au
DX 210753
Telephone: (03) 9651 5000
Facsimile: (03) 9651 5054
Email: premier@dpc.vic.gov.au
Internet: www.premier.vic.gov.au

Our Ref:

MESSAGE FROM THE PREMIER OF VICTORIA

Congratulations Mountain Goat Beer Pty Ltd for winning the Premier's Trophy for 'Best Victorian Beer' with your Surefoot Stout.

The Victorian Government is a proud supporter of the Australian International Beer Awards Festival, which is jointly organised by The Royal Agricultural Society of Victoria Limited and The University of Ballarat.

Victoria is the heartland of beer and brewing in Australia. It is the location of Australia's largest brewery and the largest malt processors. Australia's only internationally accredited provider of brewing education courses and training programs is also located in Victoria. The Government is working to further build on this enviable reputation by assisting in the development and growth of the State's micro-brewing industry.

The Premier's Trophy for 'Best Victorian Beer' recognises and rewards brewing excellence as demonstrated by a Victorian-based brewer. As the event's Patron, I am pleased to hear that this Award has been extremely well received by the industry and the general public since its introduction in 2002.

I congratulate Mountain Goat Beer Pty Ltd, a company committed to excellence in brewing, on winning the 2004 Premier's Trophy for 'Best Victorian Beer'. Like Victoria's brewing industry, it represents another success story for our State.

HON STEVE BRACKS MP
Premier of Victoria

INTERNATIONAL SECTION

Open to all commercial brewers authorised, licensed or registered in their country of origin, with a minimum brewlength of 30 hL. Australasian brewers that meet the minimum brewlength requirement are also eligible to enter this section.

PACKAGED

CLASS 1 Lager

- Sub-class**
- a) European Style Lager
 - b) Pilsener Style
 - c) Dark Lager
 - d) Other, e.g. Amber, Bock, Oktoberfest, Marzen, Vienna

CLASS 3 Ale

- Sub-class**
- a) British Style Pale Ale
 - b) American Style Pale Ale
 - c) India Pale Ale
 - d) Amber Ale
 - e) Dark Ale
 - f) Other (brewer must specify style)

CLASS 5 Porter

CLASS 7 Stout

- Sub-class**
- a) Dry
 - b) Sweet
 - c) Imperial
 - d) Other, e.g. Oatmeal

DRAUGHT

CLASS 2 Lager

- Sub-class**
- a) European Style Lager
 - b) Pilsener Style
 - c) Dark Lager
 - d) Other, e.g. Amber, Bock, Oktoberfest, Marzen, Vienna

CLASS 4 Ale

- Sub-class**
- a) British Style Pale Ale
 - b) American Style Pale Ale
 - c) India Pale Ale
 - d) Amber Ale
 - e) Dark Ale
 - f) Other

CLASS 6 Porter

CLASS 8 Stout

- Sub-class**
- a) Dry
 - b) Sweet
 - c) Imperial
 - d) Other, e.g. Oatmeal

AUSTRALASIAN SECTION

This section is open to all brewers licensed for sale in Australia, New Zealand and Pacific Islands, i.e. those holding the requisite licenses from the relevant Federal and State authorities in Australia and the relevant statutory authorities in New Zealand and the Pacific Islands. There is no minimum brewlength for this section.

PACKAGED

- CLASS 9 Lager**
- Sub-class**
- a) Australian Style Lager
 - b) European Style Lager
 - c) Pilsener Style
 - d) Dark Lager
 - e) Other, e.g. Amber, Bock, Oktoberfest, Marzen, Vienna
- CLASS 11 Ale**
- Sub-class**
- a) Australian Pale Ale
 - b) British Style Pale Ale
 - c) American Style Pale Ale
 - d) India Pale Ale
 - e) Amber Ale
 - f) Dark Ale
 - g) Other
- CLASS 13 Porter**
- CLASS 15 Stout**
- Sub-class**
- a) Dry
 - b) Sweet
 - c) Imperial
 - d) Other, e.g. Oatmeal
- CLASS 17 Reduced Alcohol** - Any product with alcohol content not less than 1.15% v/v and not greater than 3.5% v/v.

DRAUGHT

- CLASS 10 Lager**
- Sub-class**
- a) Australian Style Lager
 - b) European Style Lager
 - c) Pilsener Style
 - d) Dark Lager
 - e) Other, e.g. Amber, Bock, Oktoberfest, Marzen, Vienna
- CLASS 12 Ale**
- Sub-class**
- a) Australian Pale Ale
 - b) British Style Pale Ale
 - c) American Style Pale Ale
 - d) India Pale Ale
 - e) Amber Ale
 - f) Dark Ale
 - g) Other
- CLASS 14 Porter**
- CLASS 16 Stout**
- Sub-class**
- a) Dry
 - b) Sweet
 - c) Imperial
 - d) Other, e.g. Oatmeal
- CLASS 18 Reduced Alcohol** - Any product with alcohol content not less than 1.15% v/v and not greater than 3.5% v/v.

SMALL BREWERY SECTION

Open to all commercial brewers authorised, licensed or registered in their country of origin, with a maximum brewlength of 30 hL. The product must be commercially available at one or more licensed outlets in the country of origin.

PACKAGED

CLASS 19 Lager

- Sub-class**
- a) Australian Style Lager
 - b) European Style Lager
 - c) Pilsener Style
 - d) Dark Lager
 - e) Other, e.g. Amber, Bock, Oktoberfest, Marzen, Vienna

CLASS 21 Ale

- Sub-class**
- a) Australian – Style Pale Ale
 - b) British – Style Pale Ale
 - c) American – Style Pale Ale
 - d) India Pale Ale
 - e) Amber Ale
 - f) Dark Ale
 - g) Other

CLASS 23 Porter

CLASS 25 Stout

- Sub-class**
- a) Dry
 - b) Sweet
 - c) Imperial
 - d) Other, e.g. Oatmeal

CLASS 27 Reduced Alcohol - Any product with alcohol content not less than 1.15% v/v and not greater than 3.5% v/v.

DRAUGHT

CLASS 20 Lager

- Sub-class**
- a) Australian Style Lager
 - b) European Style Lager
 - c) Pilsener Style
 - d) Dark Lager
 - e) Other, e.g. Amber, Bock, Oktoberfest, Marzen, Vienna

CLASS 22 Ale

- Sub-class**
- a) Australian – Style Pale Ale
 - b) British – Style Pale Ale
 - c) American – Style Pale Ale
 - d) India Pale Ale
 - e) Amber Ale
 - f) Dark Ale
 - g) Other (brewer must specify style)

CLASS 24 Porter

CLASS 26 Stout

- Sub-class**
- a) Dry
 - b) Sweet
 - c) Imperial
 - d) Other, e.g. Oatmeal

CLASS 28 Reduced Alcohol - Any product with alcohol content not less than 1.15% v/v and not greater than 3.5% v/v.

SPECIALTY SECTION

Open to all commercial brewers authorised, licensed or registered in their country of origin. There is no minimum brewlength for this section, however, the product must be commercially available at one or more licensed outlets in the country of origin.

PACKAGED

- CLASS 29** **Low Alcohol** - Any product with alcohol content less than 1.15% v/v
- CLASS 30** **Wheat Beer** - extract must be derived from at least 30% wheat
- Sub-class**
- a) Wheat (made with wheat, ale or lager, no phenolics, filtered or unfiltered)
 - b) German Style Kristal
 - c) German Style Hefeweizen
 - d) German Style Dark / Dunkel
 - e) Berlinerweiss Style
- CLASS 31** **Herb and Spice Beer** - (ales or lagers) e.g. brewed with the addition of herbs, chilli etc.
- CLASS 32** **Fruit Beer** - (ales or lagers) brewed with the addition of fruit.
- CLASS 33** **Belgian and French Style Ales**
- Sub-class**
- a) Strong Golden Ale
 - b) Abbey Style, Dubbel & Tripel
 - c) Lambic, including Gueze, Kriek, etc
 - d) Saison
 - e) Other
- CLASS 34** **Belgian Style Witbiers**
- CLASS 35** **Scotch Ale and Barleywines.**
- CLASS 36** **Other** - (ales or lagers) e.g. brewed with the addition of honey, smoked malt, etc.
- Sub-class**
- a) Brewed with addition of honey
 - b) Smoked beer
 - c) Wood aged beer
 - d) Other

DRAUGHT

- CLASS 37** **Low Alcohol** - Any product with alcohol content less than 1.15% v/v
- CLASS 38** **Wheat Beer** - extract must be derived from at least 30% wheat.
- Sub-class**
- a) Wheat (made with wheat, ale or lager, no phenolics, filtered or unfiltered)
 - b) German Style Kristal
 - c) German Style Hefeweizen
 - d) German Style Dark / Dunkel
 - e) Berlinerweiss Style
- CLASS 39** **Other**
- Sub-class**
- a) Herb and Spice Beer
 - b) Fruit Beer
 - c) Belgian Style Fruit Beer e.g Kriek, Fromboze
 - d) French Style Ales
 - e) Belgian Style Witbier
 - f) Scotch Ale and Barleywines
 - g) Other

PACKAGING SECTION

Open to all commercial packaged (bottled or canned) products.

- CLASS 40** **Packaging**
- Sub-class**
- a) Labels
 - b) Consumer retail pack

Criteria

1. **Packaging aesthetics e.g:**
End user appeal, name or brand visibility, branding consistency in product range, suitability of package for displays, integrity of design consistency (primary container, pack, carton & display), alignment of packaging and labelling components, legibility of printing, unique aesthetics characteristic - **Maximum 10 points**
2. **Product information e.g:**
Product usage/ideas
Product ingredients listing
Regulatory information and other unique information - **Maximum 5 points**
3. **Utility of Packaging e.g:**
Ease of carrying and opening, protection of product, recyclable materials, shelf life, other unique technical factor (eg oxygen barrier, container construction) - **Maximum 5 points**

Total - Maximum 20 points

KEG SYSTEMS

KEGS AND DRAUGHT DISPENSING EQUIPMENT

Keg Systems has been serving the brewing industry since 1995. Whether you are a craft, micro or large scale commercial brewery, Keg Systems can be of service to you.

agents for

SCHÄFER

Container systems

Schäfer Container Systems has a range of stainless steel and polyurethane-coated beverage containers from 5.2 to 50 litres.



ROTECH

IRI

KEG Monitoring

Rotech is the specialist in racker monitoring. 'Rotechs' are in routine use in dozens of breweries worldwide, including all the major groups and most independents in the UK as well as Europe, Australia, New Zealand and North America.



Keg Systems P.O. Box 6254 Alexandria NSW 2015
T +61 2 9319 5447 F +61 2 9310 4336 E Info@kegsystems.com

www.kegsystems.com

TROPHY WINNERS

GRAND CHAMPION TROPHY

For the Highest Scoring Beer

India Pelican Ale

Pelican Pub & Brewery, Oregon, USA

PREMIER'S TROPHY

For Best Victorian Beer

Surefoot Stout

Mountain Goat Beer Pty Ltd, VIC

University of Ballarat Vice - Chancellor's Trophy for CHAMPION AUSTRALASIAN BREWERY

The Swan Brewing Company Pty Limited, WA

International Malting Company Trophy for CHAMPION INTERNATIONAL BREWERY

Lion Nathan Beer & Beverages (Suzhou) Co Ltd, China

Advanced Bottling UK Trophy for CHAMPION SMALL BREWERY

Paddy's Brewery, NSW

National Liquor News Trophy for CHAMPION SPECIALTY BEER

White Rock Wheat Beer

Martinborough Brewing Company, New Zealand

TROPHY WINNERS

CHAMPION PACKAGING AWARD

Carlton Empire Carton
Carlton & United Breweries Ltd, VIC

Visy Industries Trophy for CHAMPION LAGER

Hahn Premium
Tooheys Pty Limited, NSW

CHAMPION ALE

India Pelican Ale
Pelican Pub & Brewery, Oregon, USA

CHAMPION STOUT

Russian Imperial Stout
Wig & Pen Brewery & Tavern, ACT

CHAMPION PORTER

Eumundi Porter
Noosa Brewing, QLD

CHAMPION REDUCED ALCOHOL BEER

Steinlager Premium Light
Lion Breweries, New Zealand

International Specialty Products (ISP) JUDGES AWARD

MALT ALL OVER THE WORLD



International Malting Company Australia

is proud to be a sponsor of the

12th Annual Australian International Beer Awards

We congratulate the winner of the
Champion International Brewery Category
and all other exhibitors on their
entries for 2004

THE FAMILY OF INTERNATIONAL MALTING COMPANIES

INTERNATIONAL MALTING COMPANY - AUSTRALIA PTY LTD

Fax: +61 (3) 5277 1960 email: malt@imca.com.au

INTERNATIONAL MALTING COMPANY - NEW ZEALAND

Fax: +64 (6) 327 0078 email: malt@imca.com.au

GRANDES MALTERIES MODERNES - FRANCE

Fax: +33 (0) 3 2055 640 email: gmm@malteries-modernes.fr

DOMINION MALTING - CANADA

Fax: +1 (204) 947 1585 email: malt@dominionmalt.mb.ca

FROEDTERT MALT CORPORATION - USA

Fax: +1 (414) 671 1385 email: info@froedtert.com

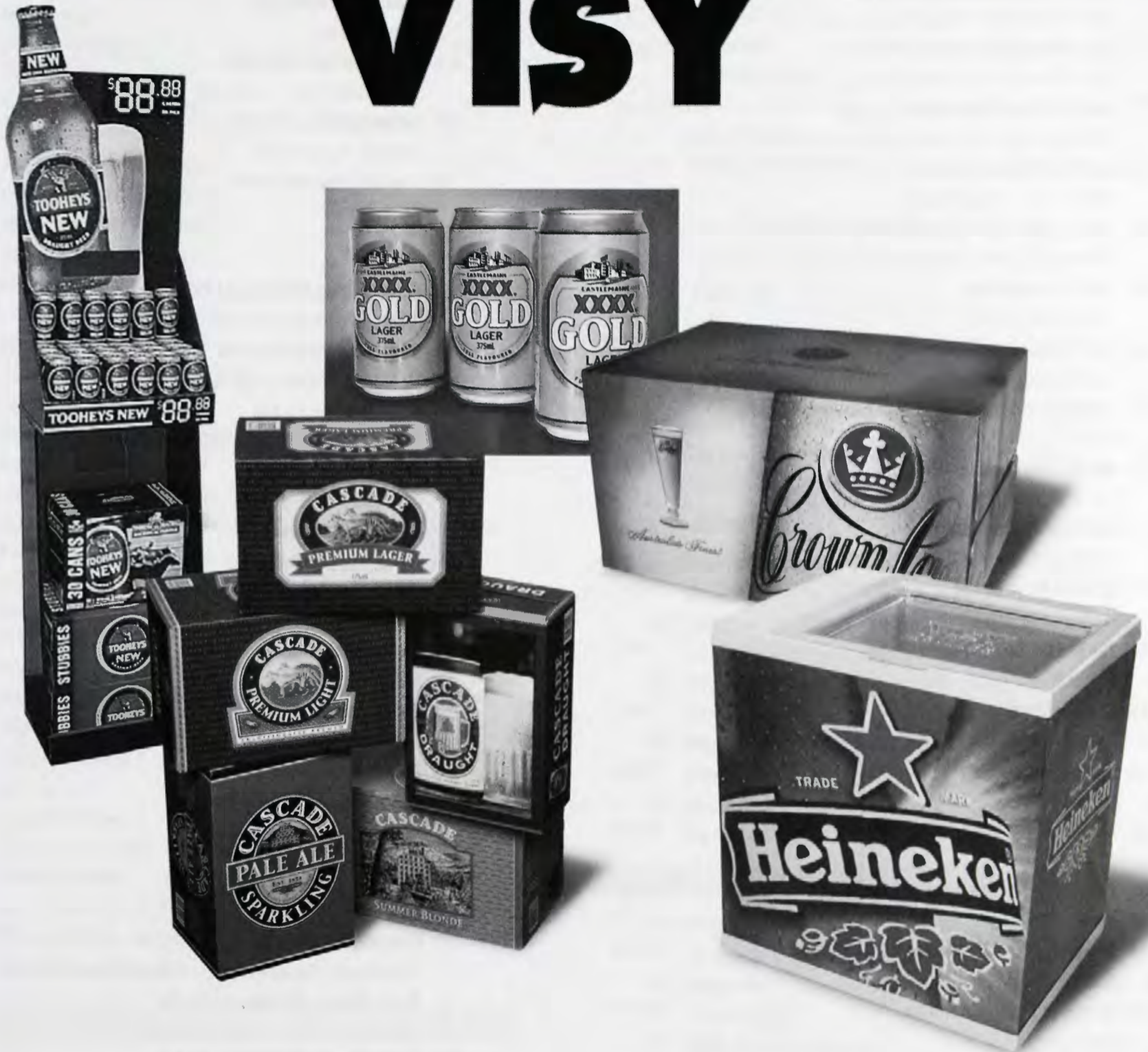
BEST OF CLASS WINNERS

Best in Class 1	Samuel Adams Oktoberfest - Boston – The Boston Beer Company Kirin Ichiban - Lion Nathan Beer & Beverages (Suzhou) Co Ltd
Best in Class 2	Dogbolter – Matilda Bay Brewing Company
Best in Class 3	Pale Ale – Little Creatures Brewing
Best in Class 4	Sassey Red – Lion Breweries
Best in Class 5	Black Butte Porter – Deschutes Brewery
Best in Class 6	Nil
Best in Class 7	Coopers Special Old Stout – Coopers Brewery Ltd
Best in Class 8	Coopers Best Extra Stout – Coopers Brewery Ltd
Best in Class 9	Hahn Premium – Tooheys Pty Limited
Best in Class 10	Vienna Lager – Redoak Pty Ltd
Best in Class 11	Monteith's Black Beer – Waitemata Brewery – DB Breweries Limited
Best in Class 12	Monk's Habit – Cock & Bull
Best in Class 13	Speights Porter – Lion Breweries
Best in Class 14	James Squire Porter – Malt Shovel Brewery Ltd
Best in Class 15	Southwark Old Stout – South Australia Brewing Co Pty Ltd
Best in Class 16	Cascade Special Stout – Carlton & United Breweries Ltd
Best in Class 17	Steinlager Premium Light – Lion Breweries
Best in Class 18	Premium Light – St Arnou Ltd
Best in Class 19	Oxford Nights – Oxford Brewing
Best in Class 20	Oxford Nights – Oxford Brewing Bock – Redoak Pty Ltd

BEST OF CLASS WINNERS

Best in Class 21	India Pelican Ale – Pelican Pub & Brewery
Best in Class 22	Monk's Habit – Cock & Bull
Best in Class 23	Eumundi Porter – Noosa Brewing
Best in Class 24	Raging Bull – Bootleg Brewery
Best in Class 25	Classic Stout – Lighthouse Brewery
Best in Class 26	Russian Imperial Stout – Wig & Pen Brewery & Tavern
Best in Class 27	D'Lite – Scharers Little Brewery
Best in Class 28	Premium Light – St Arnou Ltd Townsville Bitter – Townsville Brewing Co
Best in Class 29	Erdinger Non-Alc Weizen Beer – Erdinger Brewery, Germany Exhibited by Beach Avenue Wholesalers Pty Ltd
Best in Class 30	Franziskaner Hefe-Weissbier Hell - Franziskaner Brau, Germany Exhibited by German Beverage Imports Pty Ltd
Best in Class 31	Chilli Beer – Outback Brewery Pty Ltd
Best in Class 32	Wheat Beer Raspberry – Redoak Pty Ltd
Best in Class 33	Trois Pistoles – Chambly, Quebec Exhibited by Palais Imports & Unibroue Inc
Best in Class 34	White Rock Wheat Beer – Martinborough Brewing Company
Best in Class 35	Supershine – Grand Ridge Brewery
Best in Class 36	Oatmeal Stout – Redoak Pty Ltd
Best in Class 37	Nil
Best in Class 38	Redback – Matilda Bay Brewing Company
Best in Class 39	Moonshine – Grand Ridge Brewery

TAP INTO THE FUTURE OF PACKAGING WITH VISY



Visy is taking the beverage industry into the future of packaging, ensuring our clients have access to the latest packaging designs, technologies & materials in a full range of beverage products.

From VisyPak's beverage can which offers under-tab coding for promotions, embossing & wet-look lacquer finishes, to the development of the Microflute Carry Pack, Visy's new promotional Chiller & POP displays; beverage manufacturers can be assured they are receiving the best packaging in the market for product protection and marketability. Using digital and computerised graphic design technology Visy offers world-class, precise photographic reproduction capabilities.

Produced from recycled and recyclable materials, it's not just the best packaging in the market, it's the best packaging for the environment.

To find out more about Visy's total offering, please call Peter Dwan on (03) 9247 4777

VISY

**INNOVATIVE PACKAGING
SOLUTIONS.**

INTERNATIONAL SECTION - PACKAGED

Class 1 - Lager

A European Style Lager

657	Carlton & United Breweries <i>Cascade Premium</i>	Gold
695	Lion Nathan Beer & Beverages (Suzhou) Co Ltd <i>Kirin Ichiban</i>	Gold
823	Beach Avenue Wholesalers Pty Ltd <i>Gosser Pale - Brau Union Brewery, Austria</i>	Silver
3	Beach Avenue Wholesalers Pty Ltd <i>Krusovice Imperial - Krusovice Brewery, Czech Republic</i>	Silver
30	Beach Avenue Wholesalers Pty Ltd <i>Radeberger Premium - Radeberger Group, Frankfurt, Germany</i>	Silver
868	Carlton & United Breweries <i>Stella Artois - Leuven, Belgium</i>	Silver
620	German Beverage Imports Pty Ltd <i>Lowenbrau Original - Lowenbrau AG, Germany</i>	Silver
543	LBM Breweries Ltd <i>1565 Victory Lager</i>	Silver
566	Lion Nathan Beer & Beverages (Suzhou) Co Ltd <i>Taihusui Light</i>	Silver
803	Lion Nathan Beer & Beverages (Suzhou) Co Ltd <i>Beck's</i>	Silver
209	Matilda Bay Brewing Company <i>Bohemian Pilsner</i>	Silver
673	San Miguel Corporation <i>San Miguel Super Dry</i>	Silver
814	Scottish Courage Ltd <i>Foster's Lager</i>	Silver
652	The Boston Beer Company <i>Samuel Adams Lager - Eden</i>	Silver
768	The Boston Beer Company <i>Samuel Adams Lager - Boston</i>	Silver
716	Boon Rawd Brewery <i>Leo Beer</i>	Bronze
616	Boon Rawd Brewery <i>Thai Beer</i>	Bronze
634	Bottling and Brewing Group Pty Ltd <i>Kuche Kuche</i>	Bronze
19	Cambodia Brewery Limited <i>Gold Crown</i>	Bronze
430	Carlton & United Breweries <i>Kronenbourg 1644</i>	Bronze
638	DB Breweries Limited <i>Monteith's Golden Lager - Waitemata Brewery</i>	Bronze
708	Foster's Vietnam <i>Biere Larue</i>	Bronze
244	Foster's Vietnam <i>Foster's Lager</i>	Bronze
103	Foster's Vietnam <i>BGI Beer</i>	Bronze
477	German Beverage Imports Pty Ltd <i>Spaten Munchner Hell - Franziskaner Brau, Germany</i>	Bronze

384	Independent Distillers <i>Haagen Lager</i>	Bronze
737	International Beer Club <i>Weihenstephan Original - Weihenstephan Brewery, Germany</i>	Bronze
833	Lion Nathan Beer & Beverages (Suzhou) Co Ltd <i>Steinlager</i>	Bronze
211	Mc Williams Wines Pty Ltd <i>Holsten Premium Bier - Holsten Brauerei AG, Germany</i>	Bronze
914	Myanmar Brewery Ltd <i>Myanmar Beer</i>	Bronze
263	Myanmar Brewery Ltd <i>Myanmar Beer</i>	Bronze
678	The Boston Beer Company <i>Samuel Adams Lager - Rochester</i>	Bronze
297	United Breweries Limited <i>Kingfisher Premium Lager</i>	Bronze
242	Vanuatu Brewing Limited <i>Tusker Premium</i>	Bronze

B Pilsener

663	Beach Avenue Wholesalers Pty Ltd <i>Bitburger Premium - Bitburger Brewery, Germany</i>	Silver
776	Carlton & United Breweries <i>Stella Artois - Leuven, Belgium</i>	Silver
106	S Smith & Son Pty Ltd <i>Singha - Boon Rawd Brewery, Thailand</i>	Silver
903	DB Breweries Limited <i>Monteith's Pilsner - Waitemata Brewery</i>	Bronze
25	Malt Shovel Brewery Ltd <i>James Squire Pilsener</i>	Bronze
77	Matilda Bay Brewing Company <i>Bohemian Pilsner</i>	Bronze
129	Pizensky Prazdroj, a.s <i>Radegast Premium</i>	Bronze
749	San Miguel Corporation <i>San Miguel Pale Pilsen</i>	Bronze
168	Trumer Australia Pty Ltd <i>Trumer Pils - Salzburg, Austria</i>	Bronze

C Dark Lager

933	Pizensky Prazdroj, a.s <i>Kozel Tmavy</i>	Gold
500	International Beer Club <i>Weihenstephan Traditional - Weihenstephan Brewery, Germany</i>	Silver
92	Beach Avenue Wholesalers Pty Ltd <i>Gosser Dark - Brau Union Brewery, Austria</i>	Bronze
968	Beach Avenue Wholesalers Pty Ltd <i>Kostritzer Schwarz Bier - Kostritzer Brewery, Germany</i>	Bronze
539	The Boston Beer Company <i>Samuel Adams Winter Lager - Rochester</i>	Bronze
59	The Boston Beer Company <i>Samuel Adams Winter Lager</i>	Bronze
468	The Boston Beer Company <i>Samuel Adams Winter Lager - Eden</i>	Bronze
994	The Spoetzl Brewery <i>Shiner Bock</i>	Bronze

D Other

115	The Boston Beer Company <i>Samuel Adams Oktoberfest - Boston</i>	Gold
153	The Boston Beer Company <i>Samuel Adams Chocolate Bock - Boston</i>	Gold
954	The Spoetzi Brewery <i>Shiner Summer Stock</i>	Gold
165	Carlton & United Breweries <i>Corona</i>	Silver
836	Molson Brewing Company <i>Foster's Lager</i>	Silver
858	Oriental Brewery <i>Cass (Cheongwon)</i>	Silver
361	The Boston Beer Company <i>Samuel Adams Oktoberfest - Rochester</i>	Silver
849	The Boston Beer Company <i>Samuel Adams Light - Eden</i>	Silver
268	The Boston Beer Company <i>Samuel Adams Light - Boston</i>	Silver
666	The Boston Beer Company <i>Samuel Adams Oktoberfest - Eden</i>	Silver
355	The Boston Beer Company <i>Samuel Adams Double Bock - Boston</i>	Silver
564	Carlton & United Breweries <i>Asahi Super Dry - Asahi Breweries Ltd, Japan</i>	Bronze
65	Carlton & United Breweries <i>Miller Genuine</i>	Bronze
523	Industrias La Coustancia, S.A. de C.V. <i>Golden Light</i>	Bronze
132	Industrias La Coustancia, S.A. de C.V. <i>Pilsener</i>	Bronze
674	Industrias La Coustancia, S.A. de C.V. <i>Regia Extra</i>	Bronze
397	Industrias La Coustancia, S.A. de C.V. <i>Suprema</i>	Bronze
851	Oriental Brewery <i>Cafri (Icheon)</i>	Bronze
57	Oriental Brewery <i>OB (Gwangui Brewery)</i>	Bronze
820	Oriental Brewery <i>OB (Icheon Brewery)</i>	Bronze
725	The Boston Beer Company <i>Samuel Adams Vienna Style</i>	Bronze

Class 3 - Ale**A British Style Pale Ale**

369	Malt Shovel Brewery Ltd <i>James Squire India Pale Ale</i>	Silver
780	The Boston Beer Company <i>Samuel Adams Pale Ale</i>	Silver

B American Style Pale Ale

919	Little Creatures Brewing <i>Little Creatures Pale Ale</i>	Gold
-----	---	------

750	Matilda Bay Brewing Company <i>Alpha Pale Ale</i>	Bronze
-----	---	--------

837	Rogue Ales <i>Brutal Bitter</i>	Bronze
-----	---	--------

C India Pale Ale

574	Little Creatures Brewing <i>Little Creatures Pale Ale</i>	Bronze
-----	---	--------

D Amber Ale

644	Rogue Ales <i>American Amber</i>	Silver
-----	--	--------

49	Rogue Ales <i>St Rogue Red</i>	Silver
----	--	--------

288	Deschutes Brewery <i>Cinder Cone Red</i>	Bronze
-----	--	--------

867	Little Creatures Brewing <i>Rogers</i>	Bronze
-----	--	--------

391	Matilda Bay Brewing Company <i>Alpha Pale Ale</i>	Bronze
-----	---	--------

E Dark Ale

212	Pete's Brewing Company <i>Pete's Wicked Ale</i>	Gold
-----	---	------

916	DB Breweries Limited <i>Monteith's Black Beer - Waitemata Brewery</i>	Silver
-----	---	--------

155	The Loaded Hog Group Ltd - Auckland Brewery <i>Hog Dark Ale</i>	Bronze
-----	---	--------

F Other

379	Deschutes Brewery <i>Bachelor ESB</i>	Silver
-----	---	--------

109	DB Breweries Limited <i>Monteith's Celtic Red - Mainland Brewery</i>	Bronze
-----	--	--------

812	Deschutes Brewery <i>Cascade Ale</i>	Bronze
-----	--	--------

324	Rogue Ales <i>Dead Guy Ale</i>	Bronze
-----	--	--------

917	Rogue Ales <i>Imperial India Pale Ale</i>	Bronze
-----	---	--------

Class 5 - Porter

558	Deschutes Brewery <i>Black Butte Porter</i>	Gold
-----	---	------

813	Rogue Ales <i>Mocha Porter</i>	Silver
-----	--	--------

199	Malt Shovel Brewery Ltd <i>James Squire Porter</i>	Bronze
-----	--	--------

Class 7 - Stout**A Dry**

352	Coopers Brewery Ltd <i>Coopers Best Extra Stout</i>	Silver
-----	---	--------

449	Coopers Brewery Ltd <i>Coopers Special Old Stout</i>	Silver
-----	--	--------

235	Carlton & United Breweries <i>Cascade Special Stout</i>	Bronze
-----	---	--------

INTERNATIONAL SECTION - DRAUGHT

Class 2 - Lager

A European Style Lager

- 511 **Matilda Bay Brewing Company** Bronze
Bohemian Pilsner

B Pilsener

- 805 **Matilda Bay Brewing Company** Silver
Bohemian Pilsner
- 507 **Carlton & United Breweries** Bronze
Stella Artois
- 862 **Malt Shovel Brewery Ltd** Bronze
James Squire Pilsener

C Dark Lager

- 400 **Matilda Bay Brewing Company** Silver
Dogbolter

Class 4 - Ale

A British Style Pale Ale

- 729 **Malt Shovel Brewery Ltd** Bronze
James Squire India Pale Ale

B American Style Pale Ale

- 899 **Little Creatures Brewing** Gold
Little Creatures Pale Ale
- 390 **Matilda Bay Brewing Company** Bronze
Alpha Pale Ale

C India Pale Ale

- 4 **Little Creatures Brewing** Bronze
Little Creatures Pale Ale

D Amber Ale

- 669 **Lion Breweries** Gold
Sasseys Red
- 151 **Little Creatures Brewing** Bronze
Rogers
- 162 **Matilda Bay Brewing Company** Bronze
Alpha Pale Ale

E Dark Ale

- 613 **Coopers Brewery Ltd** Silver
Coopers Dark Ale

F Other

- 11 **Coopers Brewery Ltd** Gold
Coopers Sparkling Ale
- 957 **Coopers Brewery Ltd** Silver
Coopers Original Pale Ale

Class 8 - Stout

A Dry

- 902 **Coopers Brewery Ltd** Gold
Coopers Best Extra Stout
- 557 **Carlton & United Breweries** Silver
Cascade Special Stout

C Imperial

- 594 **Lion Breweries** Bronze
Sultry Dark

AUSTRALASIAN SECTION - PACKAGED

Class 9 - Lager

A Australian Style Lager

- 853 **South Australian Brewing Co Pty Ltd** Gold
Southwark Premium
- 476 **The Swan Brewery Company Pty Limited** Gold
Hahn Premium
- 838 **Tooheys Pty Limited** Gold
Hahn Premium
- 354 **Tooheys Pty Limited** Gold
Tooheys Extra Dry
- 466 **Carlton & United Breweries** Silver
Cascade Premium Lager
- 81 **Castlemaine Perkins Pty Ltd** Silver
Tooheys Extra Dry
- 293 **DB Breweries Limited** Silver
Monteith's Golden Lager - Waitemata Brewery
- 940 **J Boag & Son Brewing Limited** Silver
J. Boag's Premium Lager
- 740 **South Australian Brewing Co Pty Ltd** Silver
Tooheys New
- 779 **Stockade Brewery Pty Ltd** Silver
Stockade Premium Lager
- 630 **The Swan Brewery Company Pty Limited** Silver
Tooheys Extra Dry
- 16 **Bluetongue Brewery P/L** Bronze
Bluetongue Premium Lager
- 935 **Castlemaine Perkins Pty Ltd** Bronze
XXXX Bitter
- 360 **Castlemaine Perkins Pty Ltd** Bronze
Tooheys New
- 70 **J Boag & Son Brewing Limited** Bronze
Boag's Draught
- 72 **Legless Brewery** Bronze
Chopper Heavy
- 10 **Matilda Bay Brewing Company** Bronze
Bohemian Pilsner
- 962 **S.P. Brewery Ltd** Bronze
S.P. Lager (Lae)
- 34 **S.P. Brewery Ltd** Bronze
S.P. Lager (Port Moresby)

742	S.P. Brewery Ltd <i>South Pacific Export Lager - (Port Moresby)</i>	Bronze
450	The Swan Brewery Company Pty Limited <i>Swan Draught</i>	Bronze
893	The Swan Brewery Company Pty Limited <i>Emu Bitter</i>	Bronze

B European Style Lager

438	Carlton & United Breweries <i>Cascade Premium Lager</i>	Gold
738	Lion Breweries <i>Mac's Reserve</i>	Gold
505	J Boag & Son Brewing Limited <i>Boag's Strongarm Bitter</i>	Silver
334	Matilda Bay Brewing Company <i>Bohemian Pilsner</i>	Silver
792	Carlton & United Breweries <i>Cascade Spring Fest</i>	Bronze
455	Samoa Breweries Ltd <i>Vailima Special Export</i>	Bronze
308	Samoa Breweries Ltd <i>Vailima Lager</i>	Bronze
973	Stockade Brewery Pty Ltd <i>Stockade Premium Lager</i>	Bronze

C Pilsener

133	Malt Shovel Brewery Ltd <i>James Squire Pilsener</i>	Gold
664	Stockade Brewery Pty Ltd <i>Stockade Premium Lager</i>	Bronze

D Dark Lager

831	Matilda Bay Brewing Company <i>Dogbolter</i>	Silver
-----	--	--------

E

694	Redoak Pty Ltd <i>Vienna Lager</i>	Gold
806	Lion Breweries <i>Mac's Black</i>	Silver
686	Redoak Pty Ltd <i>Bock</i>	Bronze

Class 11 - Ale

A Australian Style Pale Ale

530	Cock & Bull <i>Classic Draught</i>	Bronze
535	Coopers Brewery Ltd <i>Coopers Sparkling Ale</i>	Bronze
340	Lion Breweries <i>Speights Pale Ale</i>	Bronze

B British Style Pale Ale

757	Cock & Bull <i>Fuggles</i>	Bronze
337	Grand Ridge Brewery <i>Yarra Valley Gold</i>	Bronze

15	Malt Shovel Brewery Ltd <i>James Squire Original India Pale Ale</i>	Bronze
----	---	--------

C American Pale Ale

145	Little Creatures Brewing <i>Little Creatures Pale Ale</i>	Gold
728	Lion Breweries <i>Mac's Copperhop</i>	Silver
909	Matilda Bay Brewing Company <i>Alpha Pale Ale</i>	Bronze

D India Pale Ale

12	Cock & Bull <i>Monk's Habit</i>	Gold
997	Little Creatures Brewing <i>Little Creatures Pale Ale</i>	Bronze

E Amber Ale

108	Auckland Breweries <i>Stone Crow American Pale Ale</i>	Silver
88	Little Creatures Brewing <i>Rogers</i>	Bronze
111	Malt Shovel Brewery Ltd <i>James Squire Original Amber Ale</i>	Bronze
21	Matilda Bay Brewing Company <i>Alpha Pale Ale</i>	Bronze

F Other

860	DB Breweries Limited <i>Monteith's Black Beer - Waitemata Brewery</i>	Gold
710	Tooheys Pty Limited <i>Tooheys Old</i>	Bronze

G Other

528	DB Breweries Limited <i>Monteith's Celtic Red - Mainland Brewery</i>	Silver
52	Malt Shovel Brewery Ltd <i>James Squire Australian Strong Ale</i>	Bronze
321	The Three Ravens Brewing Company Ltd <i>Blond Raven</i>	Bronze

Class 13 - Porter

276	Lion Breweries <i>Speights Porter</i>	Gold
795	J Boag & Son Brewing Limited <i>Boag's Honey Porter</i>	Silver
166	Malt Shovel Brewery Ltd <i>James Squire Porter</i>	Silver

Class 15 - Stout

A Dry

637	Castlemaine Perkins Pty Ltd <i>Carbine Stout</i>	Bronze
-----	--	--------

C Imperial

437	South Australian Brewing Co Pty Ltd <i>Southwark Old Stout</i>	Gold
-----	--	------

786 **South Australian Brewing Co Pty Ltd** Bronze
Swan Stout

Class 17 - Reduced Alcohol - any product with alcohol content not less than 1.15% and not greater than 3.5% v/v

959 **Lion Breweries** Gold
Steinlager Premium Light

826 **Matilda Bay Brewing Company** Gold
Premier

121 **Matilda Bay Brewing Company** Gold
Redback Light

56 **Carlton & United Breweries** Silver
Carlton Midstrength - Matilda Bay

190 **Carlton & United Breweries** Silver
Cascade Premium Light

193 **Carlton & United Breweries** Silver
Carlton Midstrength

782 **Carlton & United Breweries** Silver
Carlton Midstrength - Yatala

878 **J Boag & Son Brewing Limited** Silver
J. Boag's Premium Light

552 **Carlton & United Breweries** Bronze
Carlton Sterling

87 **Castlemaine Perkins Pty Ltd** Bronze
Hahn Premium Light

562 **Tooheys Pty Limited** Bronze
Hahn Premium Light

AUSTRALASIAN - DRAUGHT

Class 10 - Lager

A Australian Style Lager

307 **Carlton & United Breweries** Silver
Cascade Draught

142 **Castlemaine Perkins Pty Ltd** Silver
XXXX Bitter

942 **Matilda Bay Brewing Company** Silver
Bohemian Pilsner

161 **Tooheys Pty Limited** Silver
Hahn Premium

364 **Tooheys Pty Limited** Silver
Tooheys New

251 **Coopers Brewery Ltd** Bronze
Coopers Regency Draught

769 **Sail and Anchor Pub Brewery** Bronze
Queens Special Bitter

B European Style Lager

810 **Matilda Bay Brewing Company** Silver
Bohemian Pilsner

632 **Carlton & United Breweries** Bronze
Stella Artois

C Pilsener

436 **Lion Breweries** Bronze
Speights Pilsener

375 **Malt Shovel Brewery Ltd** Bronze
James Squire Pilsener

69 **Paddy's Brewery** Bronze
Paddy's Pilsener

E Other

227 **Redoak Pty Ltd** Gold
Vienna Lager

744 **Matilda Bay Brewing Company** Bronze
Beez Neez

382 **Redoak Pty Ltd** Bronze
Bock

Class 12 - Ale

A Australian Style Pale Ale

542 **Coopers Brewery Ltd** Silver
Coopers Sparkling Ale

635 **Coopers Brewery Ltd** Silver
Coopers Original Pale Ale

298 **St Arnou** Silver
St Arnou Pale Ale

216 **Cock & Bull** Bronze
Classic Draught

B British Style Pale Ale

684 **Cock & Bull** Silver
Fuggles

604 **Grand Ridge Brewery** Silver
Yarra Valley Gold

51 **Grand Ridge Brewery** Bronze
Gippsland Gold Pale Ale

C American Style Pale Ale

265 **Little Creatures Brewing** Gold
Little Creatures Pale Ale

534 **Matilda Bay Brewing Company** Bronze
Alpha Pale Ale

D India Pale Ale

597 **Cock & Bull** Gold
Monk's Habit

323 **Little Creatures Brewing** Silver
Little Creatures Pale Ale

205 **Sail and Anchor Pub Brewery** Bronze
Indian Pale Ale

E Amber Ale

711 **Matilda Bay Brewing Company** Silver
Alpha Pale Ale

565 **Little Creatures Brewing** Bronze
Rogers

370 **Malt Shovel Brewery Ltd** Bronze
James Squire Original Amber Ale

925 **Paddy's Brewery** Bronze
Paddy's Amber Ale

F Dark Ale

518 **Coopers Brewery Ltd** Silver
Coopers Dark Ale

590 **Lawrence Victor Estate Brewery** Bronze
Lawrence Victor Coonawarra Old Ale

231 **Tooheys Pty Limited** Bronze
Tooheys Old

G Other

815 **Paddy's Brewery** Silver
Paddy's Strong Scottish Ale

493 **Potters Brewery** Bronze
Potters Kölsch

327 **Sail and Anchor Pub Brewery** Bronze
Iron Brew

Class 14 - Porter

239 **Cock & Bull** Gold
Dark Star

501 **Malt Shovel Brewery Ltd** Gold
James Squire Porter

536 **Paddy's Brewery** Silver
Paddy's Chocolate Porter

Class 16 - Stout

A Dry

188 **Carlton & United Breweries** Gold
Cascade Special Stout

568 **Coopers Brewery Ltd** Gold
Coopers Best Extra Stout

D Other

498 **Redoak Pty Ltd** Bronze
Oatmeal Stout

Class 18 - Reduced Alcohol - any product with alcohol content not less than 1.15% v/v and not greater than 3.5% v/v.

366 **Carlton & United Breweries** Silver
Carlton Midstrength - Matilda Bay

353 **Carlton & United Breweries** Silver
Cascade Premium Light

182 **Carlton & United Breweries** Silver
Carlton Midstrength

703 **St Arnou** Silver
St Arnou Premium Light

682 **Carlton & United Breweries** Bronze
Carlton Midstrength - Yatala

947 **Carlton & United Breweries** Bronze
Carlton Sterling

700 **Castlemaine Perkins Pty Ltd** Bronze
XXXX Gold

770 **Tooheys Pty Limited** Bronze
Hahn Premium Light

SMALL BREWERY SECTION

Class 19 - Lager

A Australian Style Lager

619 **Bintara Brewery** Bronze
Bintara Lager

936 **Legless Brewery** Bronze
Chopper Heavy

706 **Stockade Brewery Pty Ltd** Bronze
Stockade Premium Lager

B European Style Lager

425 **Stockade Brewery Pty Ltd** Silver
Stockade Premium Lager

596 **Bintara Brewery** Bronze
Bintara Lager

381 **Cock & Bull** Bronze
Blue Goose

930 **Oxford Brewing** Bronze
Oxford Premium

C Pilsener

148 **Lighthouse Brewery** Silver
Tasman Bay Pilsener

174 **Stockade Brewery Pty Ltd** Silver
Stockade Premium Lager

704 **Cock & Bull** Bronze
Blue Goose

D Dark Lager

250 **Robsons Brewing Co Ltd** Bronze
Robsons Black Tom

E Other

291 **Oxford Brewing** Gold
Oxford Nights

332 **Redoak Pty Ltd** Silver
Vienna Lager

992 **Oxford Brewing** Bronze
Oxtoberfest

643 **Redoak Pty Ltd** Bronze
Bock

944 **Yarra Flats Brewery P/L (Trading as Buckley's Beer)** Bronze
Buckleys Dark Bock

Class 21 - Ale

A Australian Style Lager

908 **Wineglass Bay Brewing** Silver
Hazards Ale

525 **Old Swan Brewery** Bronze
OSB Pale Ale

B British Style Pale Ale

- 439 **Martinborough Brewing Company** Silver
The Square Ale
- 43 **Grand Ridge Brewery** Bronze
Gippsland Gold Premium

C American Style Pale Ale

- 896 **Lawrence Victor Estate Brewery** Silver
Lawrence Victor Coonawarra Ale
- 964 **Oxford Brewing** Bronze
Oxford Pale Ale

D India Pale Ale

- 802 **Pelican Pub Brewery** Gold
India Pelican Ale
- 36 **Cock & Bull** Silver
Monk's Habit

E Amber Ale

- 128 **Noosa Brewing** Bronze
Eumundi Real Ale

F Dark Ale

- 269 **Bootleg Brewery** Bronze
Toms Brown Ale
- 709 **Jamieson Brewery** Bronze
Jamieson Brown Ale
- 631 **Lighthouse Brewery** Bronze
Dicks Dark
- 467 **Pelican Pub Brewery** Bronze
Doryman's Dark Ale
- 852 **The Loaded Hog Group Ltd - Christchurch Brewery** Bronze
Hog Dark Ale
- 989 **Wineglass Bay Brewing** Bronze
Hazards Dark

G Other

- 983 **Cock & Bull** Gold
Monk's Habit
- 157 **Cock & Bull** Silver
Fuggles

Class 23 - Porter

- 724 **Noosa Brewing** Gold
Eumundi Porter
- 221 **Bootleg Brewery** Bronze
Raging Bull
- 299 **Grand Ridge Brewery** Bronze
Black and Tan

Class 25 - Stout**C Imperial**

- 888 **Lighthouse Brewery** Silver
Classic Stout

Class 27 - Reduced Alcohol - any product with alcohol content not less than 1.15% and not greater than 3.5% v/v

- 975 **Scharers Little Brewery** Gold
D-Lite
- 5 **Oxford Brewing** Silver
Oxford 152
- 451 **Oxford Brewing** Silver
Oxford Light
- 576 **Bootleg Brewery** Bronze
Amber Light
- 784 **Yarra Flats Brewery P/L (Trading as Buckley's Beer)** Bronze
Buckleys Light

SMALL BREWERY SECTION - DRAUGHT**Class 20 - Lager****A Australian Style Lager**

- 14 **Oxford Brewing** Silver
Oxford Bitter
- 743 **Bluetongue Brewery P/L** Bronze
Bluetongue Premium Lager
- 821 **Cock & Bull** Bronze
Blue Goose
- 537 **Dux de Lux** Bronze
Dux Lager
- 338 **Wildwood Brewing Company** Bronze
Occy Bitter

B European Style Lager

- 753 **Oxford Brewing** Gold
Oxford Premium
- 608 **Sail and Anchor Pub Brewery** Silver
House Lager
- 928 **Bluetongue Brewery P/L** Bronze
Bluetongue Premium Lager

C Pilsener

- 610 **Bootleg Brewery** Silver
Wils Pils
- 804 **Paddy's Brewery** Silver
Paddy's Pilsener
- 972 **Cock & Bull** Bronze
Blue Goose
- 282 **Feral Brewing Company** Bronze
Feral Organic Pilsener

E Other

- 870 **Oxford Brewing** Gold
Oxford Nights
- 64 **Redoak Pty Ltd** Gold
Vienna Lager
- 787 **Redoak Pty Ltd** Gold
Bock

977	Bluetongue Brewery P/L <i>Bluetongue Ginger Beer</i>	Bronze
309	Trew Brew Pty Ltd <i>Blonde Premium Wheat Beer</i>	Bronze

Class 22 - Ale

A Australian Style Pale Ale

146	Mountain Goat Beer <i>Pale Ale</i>	Silver
547	Townsville Brewing Co <i>Diggers Pale Ale</i>	Silver
818	St Arnou <i>St Arnou Pale Ale</i>	Bronze

B British Style Pale Ale

177	James Squire Brewhouse <i>Highwayman</i>	Silver
228	Cock & Bull <i>Fuggles</i>	Bronze
138	Cock & Bull <i>Classic Draught</i>	Bronze
328	Grand Ridge Brewery <i>Gippsland Gold Premium</i>	Bronze
112	Grand Ridge Brewery <i>Yarra Valley Gold</i>	Bronze
697	Gunn Island Brew Bar <i>Gunn Island Brew Bar Pale Ale</i>	Bronze
741	James Squire Brewhouse <i>Portlandpale</i>	Bronze

C American Style Pale Ale

874	James Squire Brewhouse <i>Speculator</i>	Silver
79	Feral Brewing Company <i>Feral Pale Ale</i>	Bronze

D India Pale Ale

275	Cock & Bull <i>Monk's Habit</i>	Silver
186	Five Islands Brewing Company <i>Parkyn's Shark Oil</i>	Silver
901	Sail and Anchor Pub Brewery <i>Indian Pale Ale</i>	Bronze

E Amber Ale

719	Paddy's Brewery <i>Paddy's Amber Ale</i>	Silver
718	Cock & Bull <i>Fuggles</i>	Bronze

F Dark Ale

292	Lord Nelson Brewery Hotel <i>Old Admiral</i>	Gold
123	Wig & Pen Brewery & Tavern <i>Bally Ragget Irish Red</i>	Gold
553	Bootleg Brewery <i>Tom's Brown Ale</i>	Silver

927	Feral Brewing Company <i>Feral German Red</i>	Bronze
732	Jamieson Brewery <i>Jamieson Brown Ale</i>	Bronze
118	Lawrence Victor Estate Brewery <i>Lawrence Victor Coonawarra Old Ale</i>	Bronze
650	Martinborough Brewing Company <i>Tora Dark Ale</i>	Bronze
871	Noosa Brewing <i>Noosa Dark Ale</i>	Bronze

G Other

200	Bug Ocean Brewing Co <i>Bugs Altbier</i>	Gold
621	Cock & Bull <i>Monk's Habit</i>	Gold
220	Townsville Brewing Co <i>Neds Red</i>	Gold
913	Cock & Bull <i>Fuggles</i>	Silver
262	Fitzroy Brewing Company <i>Pale Ale</i>	Silver
861	Paddy's Brewery <i>Paddy's Strong Scottish Ale</i>	Silver
492	Wig & Pen Brewery & Tavern <i>Kamberra Kolsch</i>	Silver
130	Potters Brewery <i>Potters Kölsch</i>	Bronze

Class 24 - Porter

958	Bootleg Brewery <i>Raging Bull</i>	Gold
702	Cock & Bull <i>Dark Star</i>	Silver
431	Holdfast Bay Brewing Company <i>The Dark 1</i>	Silver
350	Noosa Brewing <i>Eumundi Porter</i>	Silver
185	Old Swan Brewery <i>OSB Porter</i>	Silver
104	Paddy's Brewery <i>Paddy's Chocolate Porter</i>	Silver
835	Bells Hotel and Brewery <i>Old Coventry Porter</i>	Bronze
222	Grand Ridge Brewery <i>Black and Tan</i>	Bronze
380	Harringtons Breweries (Nelson) <i>Wobbly Boot Porter</i>	Bronze

Class 26 - Stout

A Dry

383	James Squire Brewhouse <i>The Craic</i>	Bronze
660	Sail and Anchor Pub Brewery <i>Brass Monkey Stout</i>	Bronze

B Sweet

- 160 **Mountain Goat Beer** Gold
Surefoot Stout

C Imperial

- 143 **Wig & Pen Brewery & Tavern** Gold
Russian Imperial Stout

D Other

- 834 **Redoak Pty Ltd** Silver
Oatmeal Stout
- 857 **Dux de Lux** Bronze
Black Shag Stout

Class 28 - Reduced Alcohol - any product with alcohol content not less than 1.15% v/v and not greater than 3.5% v/v.

- 39 **Oxford Brewing** Silver
Oxford Light
- 727 **St Arnou** Silver
St Arnou Premium Light
- 721 **Townsville Brewing Co** Silver
Townsville Bitter
- 479 **Potters Brewery** Bronze
Potters Premium Light
- 747 **Wig & Pen Brewery & Tavern** Bronze
Mr Natural

SPECIALTY SECTION – PACKAGED

Class 29 - Low Alcohol - any product with alcohol content less than 1.15% v/v.

- 62 **Beach Avenue Wholesalers Pty Ltd** Silver
Erdinger Non-Alc Weizen Beer - Erdinger Brewery, Germany
- 402 **Coopers Brewery Ltd** Silver
Coopers Birell
- 842 **Beach Avenue Wholesalers Pty Ltd** Bronze
Clausthaler Premium - Radeberger Group, Germany
- 733 **Plzensky Prazdroj, a.s** Bronze
Birell

Class 30 - Wheat Beer - extract must be derived from at least 30% wheat.

A Wheat

- 785 **The Spoetzl Brewery** Gold
Shiner Hefeweizen
- 116 **Jamieson Brewery** Silver
Jamieson Mountain Ale
- 956 **The Spoetzl Brewery** Silver
Shiner Winter Ale
- 567 **Bintara Brewery** Bronze
Bintara Cristal Wheat

- 615 **Carlton & United Breweries** Bronze
Cascade Summer Blonde

- 339 **Cock & Bull** Bronze
Buxom Blonde

B German Style Kristal

- 633 **International Beer Club** Gold
Weihenstephan Kristal - Weihenstephan Brewery, Germany

- 612 **Matilda Bay Brewing Company** Gold
Redback

- 345 **German Beverage Imports Pty Ltd** Silver
Franziskaner Weissbier Kristallklar - Franziskaner Brau, Germany

C German Style Hefeweizen

- 672 **German Beverage Imports Pty Ltd** Gold
Franziskaner Hefe-Weissbier Hell - Franziskaner Brau, Germany

- 900 **International Beer Club** Silver
Weihenstephan Hefe - Weihenstephan Brewery, Germany

- 661 **Beach Avenue Wholesalers Pty Ltd** Bronze
Erdinger Mit Feine Hefe - Erdinger Brewery, Germany

- 475 **Bootleg Brewery** Bronze
Sou'west Wheat

- 316 **Oxford Brewing** Bronze
Oxford Cloudy

- 920 **The Boston Beer Company** Bronze
Samuel Adams Weis Bier

- 266 **The Boston Beer Company** Bronze
Samuel Adams Hefeweizen

D German Style Dark/Dunkel

- 730 **Beach Avenue Wholesalers Pty Ltd** Bronze
Erdinger Dunkel Weisbier - Erdinger Brewery, Germany

- 289 **International Beer Club** Bronze
Weihenstephan Hefe Dunkel - Weihenstephan Brewery, Germany

Class 31 - Herb & Spice Beers - ales or lagers e.g. brewed with addition of herbs, chilli etc

- 963 **Harringtons Breweries (Nelson)** Gold
Xmas Spiced Ale

- 460 **Outback Brewery Pty Ltd** Gold
Chilli Beer

- 29 **Rogue Ales** Gold
Chocolate Stout

- 149 **DB Breweries Limited** Silver
Monteith's Summer Ale - Waitemata Brewery

Class 32 - Fruit Beers - ales or lagers brewed with addition of fruit, other than belgian style fruit beers

- 247 **Palais Imports + Unibroue Inc** Gold
Apple Ephemere - Chambly, Quebec

- 506 **Redoak Pty Ltd** Gold
Wheat Beer - Raspberry

- 392 **Pete's Brewing Company** Bronze
Pete's Wicked Strawberry Blonde

Class 33 - Belgian and French Style Ales

A Strong Golden Ale

- 988 Palais Imports + Unibroue Inc Gold
La Fin du Monde - Chambly, Quebec

B Abbey style, Dubbel and Tripel

- 541 Palais Imports + Unibroue Inc Gold
Maudite - Chambly, Quebec
- 521 Palais Imports + Unibroue Inc Gold
Trois Pistoles - Chambly, Quebec
- 416 Beach Avenue Wholesalers Pty Ltd Silver
Delirium Tremens - Family Brewery Huyghe, Belgium
- 723 Carlton & United Breweries Silver
Hoegaarden Forbidden Fruit - Leuven, Belgium
- 31 Carlton & United Breweries Silver
Lefe Vieux Cuvee - Leuven, Belgium
- 911 Beach Avenue Wholesalers Pty Ltd Bronze
Delirium Noel - Family Brewery Huyghe, Belgium
- 362 Beach Avenue Wholesalers Pty Ltd Bronze
La Guillotine - Family Brewery Huyghe, Belgium

C Lambic, including Geuze, Kriek etc

- 486 Carlton & United Breweries Gold
Bellevue Kriek - Leuven, Belgium
- 745 Potters Brewery Bronze
Potters Cassis
- 622 Potters Brewery Bronze
Potters Frambozen

Class 34 - Belgian Style Witbiers

Belgian Style Witbiers

- 561 Martinborough Brewing Company Gold
White Rock Wheat Beer
- 388 Rogue Ales Silver
Half - e - weizen
- 855 The Boston Beer Company Bronze
Samuel Adams White Ale - Eden

Class 35 - Scotch Ale and Barleywines

- 201 Grand Ridge Brewery Gold
Supershine
- 844 BridgePort Brewing Company Silver
BridgePort Old Knucklehead Barleywine
- 35 Ise Kadoya Beer Silver
Shinto Beer
- 514 Grand Ridge Brewery Bronze
Moonshine
- 965 Ise Kadoya Beer Bronze
Scotch Ale
- 144 Rogue Ales Bronze
Old Crustacean Barleywine
- 461 The Boston Beer Company Bronze
Samuel Adams Scotch Ale

Class 36 - Other

A Brewed with addition of honey

- 342 The Spoetzi Brewery Silver
Shiner Hefeweizen

C Wood Aged Beer

- 330 The Boston Beer Company Gold
Samuel Adams Millennium
- 181 The Boston Beer Company Bronze
Samuel Adams Utopias
- 405 The Boston Beer Company Bronze
Samuel Adams Triple Bock - Boston

D Other

- 653 Redoak Pty Ltd Gold
Oatmeal Stout
- 37 Carlton & United Breweries Silver
Cascade First Harvest
- 164 Redoak Pty Ltd Silver
Oatmeal Stout - Belgium Chocolate & Cherries

SPECIALTY SECTION - DRAUGHT

Class 38 - Wheat Beer extract must be derived from at least 30% wheat

A Wheat

- 170 Carlton & United Breweries Silver
Cascade Summer Blonde
- 687 Jamieson Brewery Silver
Jamieson Mountain Ale

B German Style Kristal

- 873 Matilda Bay Brewing Company Gold
Redback

C German Style Hefeweizen

- 48 Bug Ocean Brewing Co Silver
Hefeweizen
- 654 German Beverage Imports Pty Ltd Silver
Franziskaner Hefe-Weissbier Hell - Franziskaner Brau, Germany
- 714 Malt Shovel Brewery Ltd Bronze
James Squire Colonial Wheat Beer

D German Style Dark/Dunkel

- 13 German Beverage Imports Pty Ltd Silver
Franziskaner Hefe-Weissbier Dunkel - Franziskaner Brau, Germany

Class 39 - Other

A Herb and Spice

- 140 Harringtons Breweries (Nelson) Gold
Summer Ale
- 368 Bluetongue Brewery P/L Bronze
Bluetongue Ginger Beer

356	Dux de Lux <i>Ginger Tom</i>	Bronze	683	Bintara Brewery <i>Bintara</i>	Bronze
343	Harringtons Breweries (Nelson) <i>Honey Ginger Lager</i>	Bronze	875	Bondi Beer Company Pty Ltd <i>Bondi Blonde Natural Ale</i>	Bronze
313	James Squire Brewhouse <i>Philanderer</i>	Bronze	386	Carlton & United Breweries <i>Carlton Draught</i>	Bronze
605	Port Adelaide Brewing Company P/L <i>Ginja</i>	Bronze	458	Independent Distillers <i>Haagen Lager</i>	Bronze
B	Fruit Beer		575	J Boag & Son Brewing Limited <i>Boag's Honey Porter</i>	Bronze
169	Dux de Lux <i>Blueberry Brown</i>	Bronze	573	Malt Shovel Brewery Ltd <i>James Squire Original Amber Ale</i>	Bronze
218	Redoak Pty Ltd <i>Wheat Beer - Raspberry</i>	Bronze	398	Matilda Bay Brewing Company <i>Bohemian Pilsner</i>	Bronze
E	Belgian Style Witbier		705	Matilda Bay Brewing Company <i>Redback</i>	Bronze
715	Carlton & United Breweries <i>Hoegaarden White - Leuven, Belgium</i>	Silver	B	Consumer Retail Packaging	
252	Wig & Pen Brewery & Tavern <i>Belgian Blonde</i>	Silver	840	Carlton & United Breweries <i>Carlton Empire Carton</i>	Gold
906	Feral Brewing Company <i>Feral Belgium White</i>	Bronze	490	Carlton & United Breweries <i>Stella Artois 12 Pack</i>	Gold
577	Holgate Brewhouse Pty Ltd <i>White Ale</i>	Bronze	712	Bluetongue Brewery P/L <i>Bluetongue Ginger Beer</i>	Silver
866	Lion Breweries <i>Verboden Vice</i>	Bronze	800	Bluetongue Brewery P/L <i>Bluetongue Premium Lager</i>	Silver
676	St Arnou <i>St Arnou St Cloud</i>	Bronze	982	Carlton & United Breweries <i>Carlton Draught Carton</i>	Silver
F	Scotch Ale and Barleywine		560	Carlton & United Breweries <i>Carlton Sterling Basket</i>	Silver
441	Grand Ridge Brewery <i>Moonshine</i>	Gold	90	Jamieson Brewery <i>Jamieson Brown Ale</i>	Bronze
G	Other		253	Legless Brewery <i>Chopper Heavy</i>	Bronze
626	Feral Brewing Company <i>Feral Farmhouse Ale</i>	Silver	772	Matilda Bay Brewing Company <i>Bohemian Pilsner</i>	Bronze
389	Carlton & United Breweries <i>Lefe Blonde - Leuven, Belgium</i>	Bronze			
33	Carlton & United Breweries <i>Lefe Brun - Leuven, Belgium</i>	Bronze			
89	Matilda Bay Brewing Company <i>Beez Neez</i>	Bronze			
677	Sail and Anchor Pub Brewery <i>Smokey</i>	Bronze			

PACKAGING

Class 40 - Packaging

A	Labels	
980	Bluetongue Brewery P/L <i>Bluetongue Premium Lager</i>	Silver
40	Bluetongue Brewery P/L <i>Bluetongue Ginger Beer</i>	Silver
892	Carlton & United Breweries <i>Carlton Empire Label</i>	Silver

ABUK

Advanced Bottling UK Limited

www.abuk.co.uk

SUPPLIERS OF BREWING, BOTTLING & PACKAGING EQUIPMENT



BREWING EQUIPMENT SUPPLIED BY ABUK NOW INSTALLED IN HOTELS AND BREWERIES IN ADELAIDE, MELBOURNE, SYDNEY, ORANGE AND BRISBANE

- Specialists in new and used micro-brewing equipment.
- Suppliers of competitively priced second hand ale and lager breweries installed in Australian hotels and restaurants.
- The new CW400 Counter Pressure bottling machine on display at the AIBA Festival.



Come and see us on Stand 42

Australian International Beer Awards Festival
Melbourne Exhibition Centre May 7 to 8

**SEE THE NEW CW400 COUNTER
PRESSURE BOTTLING MACHINE**

In Australia & New Zealand contact:

Wes Smith

Wes Smith & Associates Pty Ltd

P O Box 1661

Bowral NSW 2576

Phone: (02) 4861 5036, Fax: (02) 4861 5037

Email: wsmith@rslcom.net.au

INDEX OF EXHIBITORS

APK PTY LTD

QUEANBEYAN, ACT - AUSTRALIA
APK Lager
APK Ginger Beer

AUCKLAND BREWERIES

OTAHUHU, AUCKLAND - NEW ZEALAND
Stone Crow Premium Lager
Stone Crow American Pale Ale
Stone Crow Dark Porter

BEACH AVENUE WHOLESALERS PTY LTD

BRAESIDE, VIC - AUSTRALIA
Bitburger Light - Bitburger Brewery, Germany
Bitburger Premium - Bitburger Brewery, Germany
Clausthaler Premium - Radeberger Group, Germany
Delirium Noel - Family Brewery Huyghe, Belgium
Delirium Tremens - Family Brewery Huyghe, Belgium
Erdinger Dunkel Weisbier - Erdinger Brewery, Germany
Erdinger Kristallklar Weisbier - Erdinger Brewery, Germany
Erdinger Mit Feine Hefe - Erdinger Brewery, Germany
Erdinger Non-Alc Weizen Beer - Erdinger Brewery, Germany
Erdinger Pikantus - Erdinger Brewery, Germany
Gosser Dark - Brau Union Brewery, Austria
Gosser Pale - Brau Union Brewery, Austria
Kostritzer Schwarz Bier - Kostritzer Brewery, Germany
Krusovice Dark - Krusovice Brewery, Czech Republic
Krusovice Imperial - Krusovice Brewery, Czech Republic
La Guillotine - Family Brewery Huyghe, Belgium
Radeberger Premium - Radeberger Group, Frankfurt,
Villers Vieille Abbaye Bie - Family Brewery Huyghe, Belgium

BELLS HOTEL AND BREWERY

SOUTH MELBOURNE, VIC - AUSTRALIA
Best Bitter
Black Ban Bitter
Irish Stout
Old Coventry Porter
Real Ale

BINTARA BREWERY

RUTHERGLEN VICTORIA - AUSTRALIA
Bintara Light Lager
Bintara Pilsner
Bintara Cristal Wheat
Bintara Pale Ale
Bintara Lager

BLACKWOOD VALLEY BREWING COMPANY

BRIDGETOWN, WA - AUSTRALIA
Blackwood Porter
Blackwood Ale
Blackwood Pale Ale
Blackwood Lager

BLUETONGUE BREWERY P/L

CAMERON PARK, NSW - AUSTRALIA
Bluetongue Premium Lager
Bluetongue Ginger Beer

BONDI BEER COMPANY PTY LTD

BONDI BEACH, NSW - AUSTRALIA
Bondi Red Natural Ale
Bondi Blonde Natural Ale

BOON RAWD BREWERY

DUSIT, BANGKOK - THAILAND
Thai Beer
Leo Beer

BOOTLEG BREWERY

DUNSBOROUGH, WA - AUSTRALIA
Amber Light
Bootleg Stout
Raging Bull
Settlers Pale Ale
Sou'west Wheat
Toms Brown Ale
Wils Pils

BOTTLING AND BREWING GROUP PTY LTD

BLANTYRE - MALAWI
Kuche Kuche

BRAIDWOOD TRADITIONAL ALES

BRAIDWOOD, NSW - AUSTRALIA
Best Bitter
Milk Stout
Ruby Mild

BRASSERIES KRONENBOURG

STRASBOURG CEDEX 5 - FRANCE
Foster's Lager

BRIDGEPORT BREWING COMPANY

PORTLAND, OREGON - USA
BridgePort Blue Heron Pale Ale
BridgePort Ebenezer Ale
BridgePort Ropewalk Amber Ale
BridgePort Pintail Copper Ale
BridgePort India Pale Ale
BridgePort Old Knucklehead Barleywine

BUG OCEAN BREWING CO

MARGARET RIVER, WA - AUSTRALIA
Bugs Altbier
Hefeweizen

CAMBODIA BREWERY LIMITED

PHNOM PENH - KINGDOM OF CAMBODIA
Gold Crown

INDEX OF EXHIBITORS

CARLTON & UNITED BREWERIES

ABBOTSFORD, VIC - AUSTRALIA

Asahi Super Dry - Asahi Breweries Ltd, Japan

Bellevue Kriek - Leuven, Belgium

Carlton Draught

Carlton Midstrength

Carlton Midstrength - Matilda Bay

Carlton Sterling

Cascade Autumn Amber

Cascade Draught

Cascade First Harvest

Cascade Premium Lager

Cascade Premium Light

Cascade Special Stout

Cascade Spring Fest

Cascade Summer Blonde

Corona

Hoegaarden Forbidden Fruit - Leuven, Belgium

Hoegaarden White - Leuven, Belgium

Kronenberg 1644- Obernai, France

Lefte Blonde - Leuven, Belgium

Lefte Brun - Leuven, Belgium

Lefte Vieux Cuvee - Leuven, Belgium

Miller Genuine

Stella Artois

Stella Artois - Leuven, Belgium

CASTLEMAINE PERKINS PTY LTD

SILVERWATER, NSW - AUSTRALIA

Carbine Stout

Hahn Premium Light

Tooheys Extra Dry

Tooheys New

Tooheys Old

XXXX Bitter

XXXX Gold

COCK & BULL

HIGHLAND PARK, AUCKLAND - NEW ZEALAND

Blue Goose

Buxom Blonde

Classic Draught

Dark Star

Fuggles

Mork's Habit

COOPERS BREWERY LTD

ADELAIDE, SA - AUSTRALIA

Coopers Sparkling Ale

Coopers Heritage

Coopers Original Pale Ale

Coopers Regency Draught

Coopers Best Extra Stout

Coopers Birell

Coopers Special Old Stout

Coopers Dark Ale

Coopers Original Ale

Coopers Regency Light

DARK ISLE BREWERY

GLENORCHY, TAS - AUSTRALIA

Black Devil Lager

India Pale Ale

Leatherwood Porter

Tripel Malt

DB BREWERIES LIMITED

OTAHUHU, AUCKLAND - NEW ZEALAND

Monteith's Golden Ale - Waitemata Brewery

Monteith's Original Ale - Waitemata Brewery

Monteith's Celtic Red - Mainland Brewery

Monteith's Summer Ale - Waitemata Brewery

Monteith's Golden Lager - Waitemata Brewery

Monteith's Pilsner - Waitemata Brewery

Monteith's Black Beer - Waitemata Brewery

DESCHUTES BREWERY

OREGON - USA

Bachelor ESB

Black Butte Porter

Cascade Ale

Cinder Cone Red

Mirror Pond Pale Ale

Obsidian Stout

Quail Springs IPA

DUX DE LUX

CHRISTCHURCH - NEW ZEALAND

Black Shag Stout

Blueberry Brown

Dux Lager

Ginger Tom

Pinot Barrel Porter

EMPIRE LIQUOR

TORRENVILLE PLAZA, SA - AUSTRALIA

Bintang Pils - PT Multi Bintang, Indonesia

FERAL BREWING COMPANY

BASKERVILLE WA - AUSTRALIA

Feral Strawberry Porter

Feral Pale Ale

Feral Pumpkin Ale

Feral Organic Pilsener

Feral Montys Milo

Feral Farmhouse Ale

Feral Belgium White

Feral German Red

FITZROY BREWING COMPANY

GEELONG, VIC - AUSTRALIA

Amber Ale

Pale Ale

FIVE ISLANDS BREWING COMPANY

WOLLONGONG EAST, NSW - AUSTRALIA

Longboard

Parkyn's Shark Oil

Pig Dog Pilsner

INDEX OF EXHIBITORS

FOSTER'S VIETNAM

VIETNAM
BGI Beer
Biere Larue
Biere Larue Export
Foster's Lager

GEELONG BREWING CO

MOOLAP, VIC - AUSTRALIA
Schönbräuhaus Premium Lager

GERMAN BEVERAGE IMPORTS PTY LTD

THE ROCKS, NSW - AUSTRALIA
Franziskaner Hefe-Weissbier Dunkel
Franziskaner Hefe-Weissbier Hell
Franziskaner Weissbier Kristallklar
Spaten Munchner Hell
Franziskaner Brau, Germany
Lowenbrau Alcohol Free
Lowenbrau Dunkel
Lowenbrau Original
Lowenbrau AG, Germany

GRAND RIDGE BREWERY

MIRBOO NORTH, VIC - AUSTRALIA
Black and Tan
Brewers Pilsener
Gippsland Gold Pale Ale
Gippsland Gold Premium
Hatlifter Stout
Hatlifter Stout Premium
Moonlight
Moonshine
Natural Blonde
Supershine
Yarra Valley Gold

GRUMPY'S BREWHAUS

VERDUN, SA - AUSTRALIA
Auld Fokker
Genuine Pale Ale
Original Draught
Red Baron

GUNN ISLAND BREW BAR

MIDDLE PARK, VIC - AUSTRALIA
Gunn Island Brew Bar Amber Ale
Gunn Island Brew Bar Red Lager
Gunn Island Brew Bar Pale Ale

HARRINGTONS BREWERIES (NELSON)

RICHMOND, NELSON - NEW ZEALAND
Barley Wine
Best Bitter
Canterbury Pale Ale
Doppelbock
Finest Lager
Harringtons Stout
Honey Ginger Lager
Summer Ale
Tasman Lager
Winter Warmer Rye Ale
Wobbly Boot Porter
Xmas Spiced Ale

HOLDFAST BAY BREWING COMPANY

GLENELG, SA - AUSTRALIA
Holdfast Bay Bronze Ale
Holdfast Bay Golden Ale
The Dark 1

HOLGATE BREWHOUSE PTY LTD

WOODEND, VIC - AUSTRALIA
Big Red Lager
Mahogany & Malt
Mt Macedon Ale
Old Pale Ale
White Ale
Woodend Pilsener
Winter Ale

INDEPENDENT DISTILLERS

LAVERTON, VIC - AUSTRALIA
Haagen Lager
Haagen Gold
Haagen Light

INDUSTRIAS LA COUSTANCIA, S.A. DE C.V.

SAN SALVADOR - EL SALVADOR
Bahia
Golden Light
Pilsener
Regia Extra
Suprema

INTERNATIONAL BEER CLUB

WEST LEEDERVILLE, WA - AUSTRALIA
Weihestephan Hefe Dunkel
Weihestephan Hefe
Weihestephan Kristal
Weihestephan Original
Weihestephan Pilsner
Weihestephan Traditional

INDEX OF EXHIBITORS

ISE KADOYA BEER

ISE MIE - JAPAN
Pale Ale
Scotch Ale
Shinto Beer
Stout
Yuzunoko Ale

J BOAG & SON BREWING LIMITED

LAUNCESTON, TASMANIA - AUSTRALIA
Boag's Draught
Tasman Bitter
Boag's Strongarm Bitter
Boag's Honey Porter
J. Boag's Premium Light
J. Boag's Premium Lager

JAMES SQUIRE BREWHOUSE

SYDNEY, NSW - AUSTRALIA
3 Weiss Men
Highwayman
Philanderer
Portlandpale
Speculator
The Craic

JAMIESON BREWERY

JAMIESON, VIC - AUSTRALIA
Jamieson Brown Ale
Jamieson Pale Ale
Jamieson Mountain Ale
Jamieson Raspberry Ale

JUNIOTTARP GLOBAL INVESTMENT LIMITED

LAGOS ISLAND - NIGERIA
Star Lager Beer

LAWRENCE VICTOR ESTATE BREWERY

PENOLA, SA - AUSTRALIA
Lawrence Victor Coonawarra Old Ale
Lawrence Victor Coonawarra Oaked Ale
Lawrence Victor Coonawarra Ale

LBM BREWERIES LTD

QORMI - MALTA
1565 Victory Lager

LEGLESS BREWERY

BRUNSWICK, VIC - AUSTRALIA
Chopper Heavy

LIGHTHOUSE BREWERY

NELSON - NEW ZEALAND
Classic Stout
Dicks Dark
Fug Nose
Haulashore Bitter
Tasman Bay Pilsener

LIMBURG BREWING COMPANY

HAVELOCK NORTH - NEW ZEALAND
Limburg Witbier

LION BREWERIES

NEWMARKET, AUCKLAND - NEW ZEALAND
Mac's Black
Mac's Copperhop
Mac's Gold
Mac's Reserve
Sassey Red
Speights Distinction Ale
Speights Pale Ale
Speights Pilsener
Speights Porter
Steinlager Premium Light
Sultry Dark
Verboden Vice
Wicked Blonde

LION NATHAN BEER & BEVERAGES (SUZHOU) CO LTD

JIANGSU PROVINCE - CHINA
Beck's
Kirin Ichiban
Steinlager
Taihusui Light

LIQUORLAND

SILVERWATER, NSW - AUSTRALIA
Bavaria Premium - Bavaria N.V, Holland
Hollandia - Bavaria N.V, Holland

LITTLE CREATURES BREWING

FREMANTLE, WA - AUSTRALIA
Little Creatures Pale Ale
Little Creatures Pilsener
Rogers

LORD NELSON BREWERY HOTEL

THE ROCKS, NSW - AUSTRALIA
Old Admiral
Three Sheets
Trafalgar Pale Ale
Victory Bitter

MALT SHOVEL BREWERY LTD

CAMPERDOWN, NSW - AUSTRALIA
James Squire Original India Pale Ale
James Squire Pilsener
James Squire Australian Strong Ale
James Squire Original Amber Ale
James Squire Porter
James Squire India Pale Ale
James Squire Colonial Wheat Beer

MARTINBOROUGH BREWING COMPANY

MARTINBOROUGH - NEW ZEALAND
The Square Ale
Tora Dark Ale
White Rock Wheat Beer

INDEX OF EXHIBITORS

MATILDA BAY BREWING COMPANY

MELBOURNE, VIC - AUSTRALIA

Alpha Pale Ale
Beez Neez
Bohemian Pilsner
Dogbolter
Premier
Redback
Redback Light

MATSO'S BROOME BREWERY

BROOME, WA - AUSTRALIA

Monsoonal Blonde
River Rocks Lager

MC WILLIAMS WINES PTY LTD

GREENACRE, NSW - AUSTRALIA

Holsten Premium Bier - Holsten Brauerei AG, Germany

MOLSON BREWING COMPANY

TORONTO - CANADA

Fosters Lager

MOUNTAIN GOAT BEER

RICHMOND, VIC - AUSTRALIA

Pale Ale
Surefoot Stout
Hightail Ale
India Pale Ale

MYANMAR BREWERY LTD

YANGOON UNION OF MYANMAR

Myanmar Beer

NAIL BREWING AUSTRALIA

PERTH, WA - AUSTRALIA

Nail Dark
Nail Ale Unfiltered
Nail Stout
Nail Ale

NOOSA BREWING

EUMUNDI, QLD - AUSTRALIA

Ashanti 100% Pure Wheat Beer
Dad's Delight
Eumundi Classic
Eumundi Extra Stout
Eumundi Porter
Eumundi Real Ale
Eumundi Sparkling Ale
Eumundi Special Stout
King Lager
Noosa Dark Ale

OLD SWAN BREWERY

PERTH, WA - AUSTRALIA

OSB Porter
OSB Pale Ale

ORIENTAL BREWERY

ICHEON CITY KYUNGGI-DO - KOREA

OB (Gwangui Brewery)
OB (Icheon Brewery)
Sound (Icheon)
Cafri (Icheon)
Cass (Cheongwon)

OUTBACK BREWERY PTY LTD

WOODPARK, NSW - AUSTRALIA

Blue Mountain Lager
Chilli Beer
Lawson Lager
Black Opal
Country Ale

OXFORD BREWING

BURLEIGH HEADS, QLD - AUSTRALIA

Oxford 152
Oxford Bitter
Oxford Light
Oxford Pale Ale
Oxford Wheat
Oxford Nights
Oxford Cloudy
Oxtoberfest
Oxford Premium

PADDY'S BREWERY

FLEMINGTON MARKETS, NSW - AUSTRALIA

Paddy's Pilsener
Paddy's Chocolate Porter
Paddy's American Pale Ale
Paddy's Amber Ale
Paddy's Autumn Fest Lager
Paddy's Strong Scottish Ale

PALAIS IMPORTS + UNIBROUE INC

ADELAIDE, SA - AUSTRALIA

Apple Ephemere - Chambly, Quebec
Blanche de Chambly - Chambly, Quebec
Don de Dieu - Chambly, Quebec
La Fin du Monde - Chambly, Quebec
Maudite - Chambly, Quebec
Trois Pistoles - Chambly, Quebec

PELICAN PUB BREWERY

PACIFIC CITY, OREGON - USA

Doryman's Dark Ale
India Pelican Ale
Kiwanda Cream Ale
MacPelican's Scottish Style Ale
Tsunami Stout

PETE'S BREWING COMPANY

SAN ANTONIO, TEXAS - USA

Pete's Wicked Ale
Pete's Wicked Strawberry Blonde
Pete's Wicked Rally Cap Ale

INDEX OF EXHIBITORS

PLZENSKY PRAZDROJ, A.S

CZECH REPUBLIC

Birell
Gambrinus
Kozel Tmavy
Radegast Premium
Saris
Saris Premium Tmavy

PORT ADELAIDE BREWING COMPANY P/L

PORT ADELAIDE, SA – AUSTRALIA

Black Bart Milk Stout
Ginja
Old Preacher Strong Ale
Port Dock Pale

POTTERS BREWERY

NULKABA, NSW – AUSTRALIA

Potters Kölsch
Potters Premium Light
Potters Frambozen
Potters Cassis

PRIVATBRAUEREI JOSEF SIGL

PBERTRUM SALZBERG – AUSTRIA

Trumer Pils

REDOAK PTY LTD

CAMMERAY, NSW - AUSTRALIA

Bavarian Pilsener
Bock
Brown Ale - Blueberry
Brown Ale - Raspberry
English Pale Ale
Extra Special Strong Bitter
Hefe Weizen
Light Lager
Oatmeal Stout
Oatmeal Stout - Belgium Chocolate
Oatmeal Stout - Belgium Chocolate & Cherries
Vienna Lager
Wheat Beer - Blackberry
Wheat Beer - Raspberry

ROBSONS BREWING CO LTD

TIMARU - NEW ZEALAND

Robsons Black Tom
The Cutter Pale Ale

ROGUE ALES

NEWPORT, OREGON – USA

American Amber
American Amber Ale
Brutal Bitter
Chipotle Ale
Chocolate Stout
Dead Guy Ale
Half - e - weizen
Honey Cream Ale
Imperial India Pale Ale
Imperial Pilsener
Imperial Stout
Mocha Porter
Morimoto Hazelnut Ale
Old Crustacean Barleywine
Shakespeare Stout
Smoke Ale
St Rogue Red
Yellow Snow Ale

ROYAL BEER CO. LTD.

NUKU'ALOFA MA UFANGA – TONGA

Ikale Export

S SMITH & SON PTY LTD

ANGASTON, SA – AUSTRALIA

Singha - Boon Rawd Brewery, Thailand

S.P. BREWERY LTD

BOROKO, PAPUA NEW GUINEA

Nuigini Ice - (Port Moresby)
S.P. Lager (Lae)
S.P. Lager (Port Moresby)
South Pacific Export Lager - (Port Moresby)

SAIL AND ANCHOR PUB BREWERY

FREMANTLE, WA – AUSTRALIA

Brass Monkey Stout
Chilli Beer
Dockers
House Lager
Indian Pale Ale
Indian Pale Ale (Hand Pump)
Iron Brew
QSB
Queens Special Bitter
Smokey
Spring Bock

SAMOA BREWERIES LTD

APIA, SAMOA

Vailima Lager
Vailima Special Export

SAN MIGUEL CORPORATION

MANDALUYONG CITY – PHILIPPINES

San Miguel Super Dry
San Miguel Pale Pilsen

INDEX OF EXHIBITORS

SCHARERS LITTLE BREWERY

PICTON, NSW - AUSTRALIA
Burraborang Bock
Scharers Lager
D-Lite

SCOTTISH COURAGE LTD

EDINBURGH - SCOTLAND
Foster's Lager

SOUTH AUSTRALIAN BREWING CO PTY LTD

SILVERWATER, NSW - AUSTRALIA
Hahn Premium Light
Hahn Witbier
Southwark Old Stout
Southwark Premium
Swan Stout
Tooheys New

ST ARNOU

SYDNEY, NSW - AUSTRALIA
St Arnou Pilsner
St Arnou Premium
St Arnou Pale Ale
St Arnou St Cloud Grand Reserve
St Arnou Framboise
St Arnou St Cloud
St Arnou Premium Light

ST IVES BREWERY

BATTERY POINT, TAS - AUSTRALIA
Gothic Gold
Old Bastard
Vicars Bitter

STOCKADE BREWERY PTY LTD

DANDENONG SOUTH, VIC - AUSTRALIA
Stockade Premium Lager

THE BOSTON BEER COMPANY

BOSTON MA - USA
Samuel Adams Winter Lager
Samuel Adams Oktoberfest - Boston
Samuel Adams Chocolate Bock - Boston
Samuel Adams Utopias
Samuel Adams Summer Ale - Eden
Samuel Adams Hefeweizen
Samuel Adams Light - Boston
Samuel Adams Millennium
Samuel Adams Double Bock - Boston
Samuel Adams Oktoberfest - Rochester
Samuel Adams Triple Bock - Boston
Samuel Adams Scotch Ale
Samuel Adams Winter Lager - Eden
Samuel Adams Summer Ale
Samuel Adams Winter Lager - Rochester
Samuel Adams White Ale
Samuel Adams Lager - Eden

Samuel Adams Oktoberfest - Eden
Samuel Adams Cherry Wheat
Samuel Adams Lager - Rochester
Samuel Adams Cream Stout
Samuel Adams Vienna Style
Samuel Adams Boston Ale
Samuel Adams Lager - Boston
Samuel Adams Old Fezziwig
Samuel Adams Pale Ale
Samuel Adams Cranberry Lambic
Samuel Adams Light - Eden
Samuel Adams White Ale - Eden
Samuel Adams Weis Bier

THE LOADED HOG GROUP LTD - AUCKLAND BREWERY

AUCKLAND - NEW ZEALAND
Hog Dark Ale
Hog Blonde Pilsner
Hog Wheat Beer
Hog Gold Lager
Hog Draft Beer
Hog Lite Beer

THE LOADED HOG GROUP LTD - CHRISTCHURCH

CHRISTCHURCH - NEW ZEALAND
Hog Draft Beer
Hog Wheat Beer
Hog Gold Lager
Hog Dark Ale
Hog Blonde Pilsener

THE SPOETZL BREWERY

SAN ANTONIO - USA
Shiner Hefeweizen
Shiner Blonde
Shiner Summer Stock
Shiner Winter Ale
Shiner Bock

THE SWAN BREWERY COMPANY PTY LIMITED

SILVERWATER, NSW - AUSTRALIA
Emu Bitter
Hahn Premium
Swan Draught
Tooheys Extra Dry

THE THREE RAVENS BREWING COMPANY LTD

THORNBURY, VIC - AUSTRALIA
Blonde Raven
Black Raven

TOOHEYS PTY LIMITED

SILVERWATER, NSW - AUSTRALIA
Hahn Premium
Hahn Premium Light
Tooheys Extra Dry
Tooheys New
Tooheys Old

INDEX OF EXHIBITORS

TOWNSVILLE BREWING CO

TOWNSVILLE, QLD - AUSTRALIA

Burdekin Gold
Diggers Pale Ale
Flanagans Dry Irish Stout
Lager Lout
Neds Red
Townsville Bitter

TREW BREW PTY LTD

ST PETERS, NSW - AUSTRALIA

Blonde Premium Wheat Beer
Thunder Bolt Strong Ale

TRUMER AUSTRALIA PTY LTD

MELVILLE, WA - AUSTRALIA

Trumer Pils - Salzburg, Austria

TUS HOLDING PTY LTD

LANSVALE, NSW - AUSTRALIA

333 Premium Export Beer - Saigon Beer Company

UNITED BREWERIES LIMITED

BANGALORE KARNATAKA - INDIA

Flying Horse Royal Lager
Kingfisher Premium Lager
Kingfisher Strong Premium Lager

VANUATU BREWING LIMITED

PORT VILLA - VANUATU

Tusker Premium

WESTERN CAPE WINE MERCHANTS

WANNEROO, WA - AUSTRALIA

Castle Lager - South African Breweries

WIG & PEN BREWERY & TAVERN

CMIC, ACT - AUSTRALIA

Amber Hefeweizen
Bally Ragget Irish Red
Belgian Blonde
Brewer IPA (Real Ale)
Bulldog Best Bitter (Real Ale)
Kamberra Kolsch
Kiandra Gold Pilsner
Mr Natural
Russian Imperial Stout
Velvet Cream Stout
Wig & Pen Pale Ale (Real Ale)

WILDWOOD BREWING COMPANY

BUSSELTON, WA - AUSTRALIA

Occy Bitter
Occy Lager
Occy Stout
Occy Wheat

WINEGLASS BAY BREWING

LENAH VALLEY, TAS - AUSTRALIA

Hazards Ale
Hazards Dark

YARRA FLATS BREWERY P/L (TRADING AS BUCKLEY'S)

HEALESVILLE, VIC - AUSTRALIA

Buckleys Original Ale
Buckleys Pilz
Buckleys Light
Buckleys Dark Bock

WITHDRAWALS AND NOT RECEIVED

Class 1

A *European Style Lager*

94 Juniotarp Global Investment Limited Not Received
Star Lager Beer

Class 9

C *Pilsener*

204 Redoak Pty Ltd Withdrawn
Barvarian Pilsener

Class 10

C *Pilsener*

756 Redoak Pty Ltd Withdrawn
Bavarian Pilsener

Class 11

B *British Style Pale Ale*

748 Redoak Pty Ltd Withdrawn
English Pale Ale

G *Other*

485 Redoak Pty Ltd Withdrawn
Extra Special Strong Bitter

Class 12

B *British Style Pale Ale*

886 Redoak Pty Ltd Withdrawn
English Pale Ale

G *Other*

55 Redoak Pty Ltd Withdrawn
Extra Special Strong Bitter

Class 17

606 Redoak Pty Ltd Withdrawn
Light Lager

Class 18

245 Redoak Pty Ltd Withdrawn
Light Lager

Class 19

A *Australian Style Lager*

582 Noosa Brewing Withdrawn
King Lager

B *European Style Lager*

551 Outback Brewery Pty Ltd Not Received
Lawson Lager

C *Pilsener*

508 Redoak Pty Ltd Withdrawn
Bavarian Pilsener

Class 20

C *Pilsener*

453 Redoak Pty Ltd Withdrawn
Bavarian Pilsener

Class 21

B *British Style Pale Ale*

487 Redoak Pty Ltd Withdrawn
English Pale Ale

G *Other*

208 Redoak Pty Ltd Withdrawn
Extra Special Strong Bitter

Class 22

B *British Style Pale Ale*

100 Redoak Pty Ltd Withdrawn
English Style Pale Ale

G *Other*

828 Redoak Pty Ltd Withdrawn
Extra Special Strong Bitter

Class 27

440 Beach Avenue Wholesalers Pty Ltd Withdrawn
Bitburger Light - Bitburger Brewery, Germany

809 Redoak Pty Ltd Withdrawn
Light Lager

Class 28

246 Redoak Pty Ltd Withdrawn
Light Lager

406 Blackwood Valley Brewing Company Not Received
Blackwood Ale

Class 31

302 **Rogue Ales** Withdrawn
Chipotle Ale

Class 32

137 **Redoak Pty Ltd** Withdrawn
Brown Ale - Blueberry

427 **Redoak Pty Ltd** Withdrawn
Brown Ale - Raspberry

Class 36**B Smoked Beer**

628 **Rogue Ales** Not Received
Smoke Ale

Class 39**B Fruit Beer**

372 **Redoak Pty Ltd** Withdrawn
Brown Ale - Raspberry

113 **Redoak Pty Ltd** Withdrawn
Brown Ale - Blueberry

G Other

348 **Dux de Lux** Withdrawn
Pinot Barrel Porter

202 **Harringtons Breweries (Nelson)** Not Received
Doppelbock

COMPLETE QUALITY SERVICE

WWW.CQS.COM.AU

**Don't suffer from poor beer quality
when you need a quality beer pour.**

Call the beer and refrigeration specialists

COMPLETE QUALITY SERVICE



- CQS will service and maintain your systems to ensure consistent and reliable performance.
- Supply and install CQS unique brand of draught beer equipment and all types of refrigeration.
- Call us for prompt, professional and reliable service from our qualified and experienced beer and refrigeration technicians.



**Call us now or
visit our showroom**

**Complete Quality Service
30 Vernon Avenue
Heidelberg Heights Victoria 3081**

**Telephone (03) 9458 3488
Fax (03) 9458 2855
Website www.cqs.com.au**

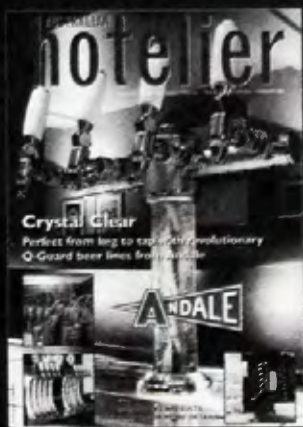


NATIONAL liquor news

National Liquor News is Australia's leading liquor trade magazine and is proud to be associated with the Australian International Beer Awards.

Keep up-to date with industry news, product education and general interest features by subscribing to National Liquor News along with some of our partner publications;

bars&clubs magazine,
Australian Hotelier
Hotel Management
and the Signature Cocktail Book.



Contact Ashley Pini on 0410 600 075 to advertise or
Ellise Blondin on 02 9357 7277 to subscribe.



BEER FESTIVAL

MAY 7 – 8, 2004

MELBOURNE EXHIBITION CENTRE

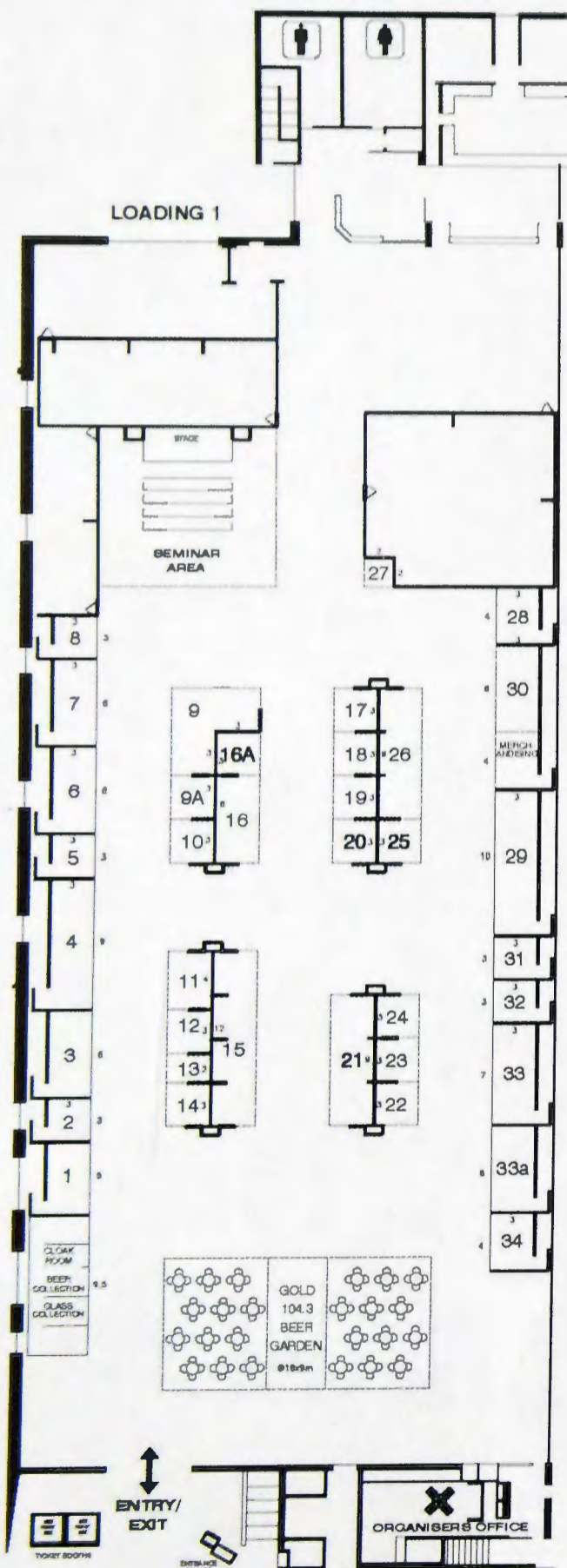
TASTING SESSIONS

Friday: 4.00pm & 8.00pm

Saturday: 11.00am, 3.00pm & 7.00pm

Tickets from \$35 at the door prior to each session

IT'S ALL ABOUT THE BEST BEERS
IN THE WORLD!



EXHIBITOR LISTING

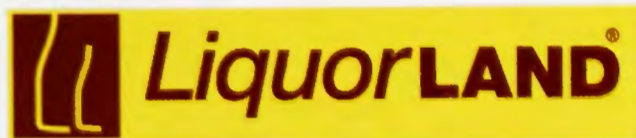
SITE	COMPANY	SITE	COMPANY
1	Matilda Bay Brewing Company	16	Beach Avenue Wholesalers
2	Bluetongue Brewery	16A	The Last Laugh Comedy Club
3	Aust International Beer Awards	17	AEB / Cellar Plus
4	Liquorland Australia	18	Drink Magazine
5	Grain and Grape	19	Bells Hotel and Brewery
6	Legends & Heroes	20	Bintani Australia
7	South Australian Super Site Lawrence Victor Estate Brewery Grumpy Brewhaus Port Dock Brewery Hotel	21	Malt Craft and Keg Systems
8	Cryer Malt Ltd	22	My Shout
9	Carlton and United Breweries	23	National Liquor News
9A	Northern Victorian Drum Doctors	24	Tsingtao (Australia) Brewery
10	Braidwood Traditional Ales	25	Malt Shovel Brewery
11	Palais Imports and Unibroue Inc	26	Tooheys Brewing Company
12	Trumer Australia Pty Ltd	27	Aussie Trolley
13	Choice Beef Jerky	28	Bio Revive Alcodol
14	Gunn Island Brew Bar	29	Coopers Brewery
15	Victorian Micro Brewers Assoc Buckley's Beer The Three Ravens Brewing Co Stockade Brewery Mountain Goat Beer Jamieson Brewery Holgate Brewhouse Grand Ridge Brewery Fitzroy Brewing Company	30	Aust International Beer Awards
		31	Australian Airbrush Tattoos
		32	Little Creatures Brewing
		33	Super Ute Simulator & Beer Pig
		33A	Independent Distillers
		34	Monteith's Brewing Company

Please note: Layout of sites may be subject to change

WWW.BEERFESTIVAL.COM.AU



CORPORATE SPONSORS



Exclusive Retail Partner



INTERNATIONAL SPECIALTY PRODUCTS



KEGS AND DRAUGHT DISPENSING EQUIPMENT



Australia's leading liquor industry magazine



INNOVATIVE PACKAGING SOLUTIONS.

BUSINESS PARTNERS

Air Liquide Australia Ltd
Carlton & United Breweries Ltd
Complete Quality Services
Rydges Melbourne

Proudly conducted by



PUTTING THE BEST ON SHOW

**IT'S ALL ABOUT
THE BEST BEERS
IN THE WORLD!**



The Royal Agricultural Society of Victoria Limited
Melbourne Showgrounds, Epsom Road
Ascot Vale, Victoria, Australia, 3032
Tel: +613 9281 7435 Fax: +613 9376 8156
Email: kerry.james@rasv.com.au
www.beerawards.com