



2006

# Prime Lamb Carcase Competition

Proudly presented by The Royal Agricultural Society of Victoria Limited

## CONTENTS

Office Bearers	2
Acknowledgements	3
Introduction	4
Judging Process	5

## RESULTS

Award Winners	6
Carcase Weight (kg) and Lean Meat Yield (%)	7
Carcase Weight (kg) and Carcase Premium (c/kg)	7
Lean Meat Yield (%) and Carcase Premium (c/kg)	8
Lean Meat Yield (kg) and Carcase Premium (c/kg)	8
Summary of 2006 Entries	8 & 9
Comparative Results from 2005	11
List of Exhibitors	12

Copyright © 2007 The Royal Agricultural Society of Victoria Limited.

This document remains the property of The Royal Agricultural Society of Victoria Limited, Melbourne Showgrounds, Epsom Road, Ascot Vale, Victoria, 3032 Australia. No part of this document may be reproduced in any form without written permission from The Royal Agricultural Society of Victoria Limited.



## OFFICE BEARERS

### **The Royal Agricultural Society of Victoria Limited**

ACN 006 728 785

Melbourne Showgrounds, Epsom Road, Ascot Vale, Victoria, 3032, Australia

T: 03 9281 7444

F: 03 9281 7592

E: rasvadmin@rasv.com.au

### **LIST OF OFFICE BEARERS 2006 - 2007**

#### **PATRON**

Professor David de Kretser, AC  
Governor of Victoria

#### **BOARD OF DIRECTORS**

J.H. Seymour AM (Ch)	B. Kefford
I.I. Bucknall	B.E. Laws
M. Carroll	G.J. Phillips
R.C.E. Cust	A. Shears-Carter
C.J. Fox	S. Spargo

#### **PRESIDENT**

J.H. Seymour AM

#### **CHIEF EXECUTIVE**

M. O'Sullivan

#### **COMPANY SECRETARY/CHIEF OPERATING OFFICER**

A. Mansour



## Symposium Speakers

**Erica Schelfhorst**, Prime Lamb Industry Development Officer, Department of Primary Industries

**Richard Apps**, Project Officer, Sheep Genetics Australia, MLA

**Theo Castricum**, Director, Castricum Brothers Pty Ltd

**James Wagstaff**, Livestock Editor, The Weekly Times

## Symposium Chairperson

**Martin Dunstan**, Prime Lamb/Wool Industry Development Officer, Department of Primary Industries

## Competition Personnel

**Matthew Castricum**, Livestock Buyer, Castricum Brothers Pty Ltd

**Theo Castricum**, Director, Castricum Brothers Pty Ltd

**Simone Stuckey**, Agricultural Events Coordinator, The Royal Agricultural Society of Victoria Limited

## Sponsors

**Castricum Brothers**

**Meat and Livestock Australia (MLA)**

**The Weekly Times**





## INTRODUCTION

The Royal Agricultural Society of Victoria (RAS) is delighted to announce the results of the 2006 RAS Prime Lamb Carcase Competition.

The 2006 Competition attracted 54 entries comprising almost 18,000 lambs, with entries received from Victoria, New South Wales and South Australia. Lambs had an average Carcase Weight of 24.11 kg and 55.1 % Lean Meat Yield, both increases on last year's competition averages. An average of \$2.61 total premium was paid per carcase entered, also an increase from the \$2.12 average premium paid per carcase in 2005.

Established by the RAS in 2002, the RAS Prime Lamb Carcase Competition replaced the Royal Melbourne Show's 'Pen of Three Competition' to provide a more accurate reflection of industry standards.

The program seeks to promote the production of prime lambs that meet export market specifications, especially lambs which have a high percentage of Lean Meat Yield. Additionally, it aims to provide producers with the opportunity to benchmark their flock against fellow producers as well as providing comparisons with industry standards.

Entries are assessed using VIAscan carcase assessment technology, developed by MLA and currently owned and further developed by SASTEK. The Video Image Analysis technology uses colour images to electronically assess the Lean Meat Yield of individual carcasses at normal chain speeds.

The RAS is extremely grateful to Castricum Brothers, in particular for their services and continued commitment to the Competition. Thanks are also extended to Meat and Livestock Australia and The Weekly Times for their continued support.

We believe that this program provides producers with a great opportunity to assess the performance of their flock and production systems against those of fellow producers and subsequently influence the growth of the Australian prime lamb industry.

Congratulations to the winners of the 2006 RAS Prime Lamb Carcase Competition and we wish them continuing success.



A handwritten signature in black ink that reads "Mark O'Sullivan". The signature is written in a cursive, flowing style.

**Mark O'Sullivan**

Chief Executive Officer

The Royal Agricultural Society of Victoria Limited



Entry in the RAS Prime Lamb Carcase Competition requires a consignment of 200 or more lambs with an average carcase weight of 20-30 kg to be processed at the Castricum Brothers abattoir in Dandenong. Consignments are assessed using the electronic carcase evaluation system, VIAscan (Figures 1.1 and 1.2).

VIAscan assesses carcasses for Lean Meat Yield based on Carcase Weight, loin content and estimated fat depth and distribution using Video Image Analysis.

Images produced by VIAscan allow a more equitable evaluation of carcasses than if value was based entirely on weight alone. This assures that producers growing higher yielding lambs are rewarded more than producers who offer fatter, lower yielding lambs of the same weight.

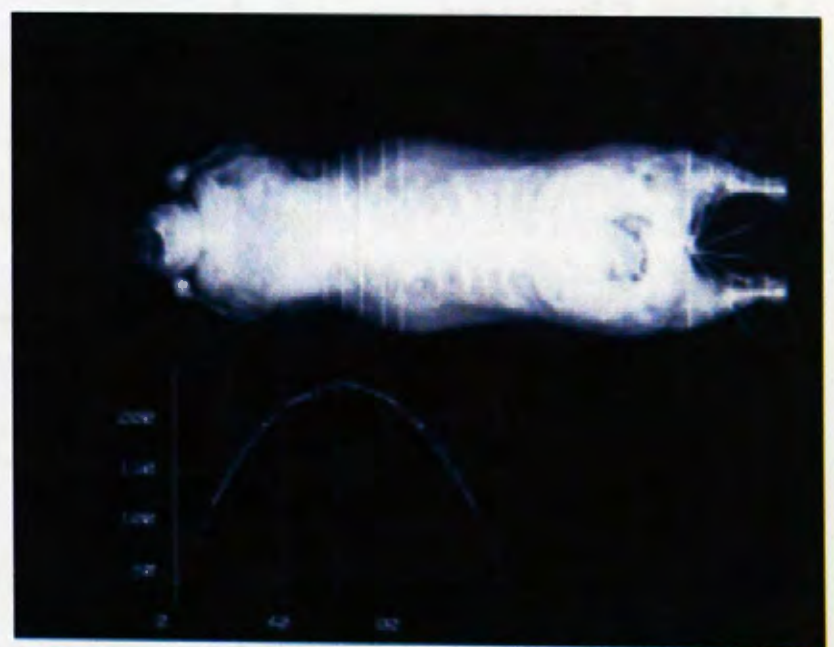
Par value is used to cost carcasses and issued on a per kg basis. Using a grid system which incorporates Carcase Weight, Lean Meat Yield (%) and adjustments for above average Meat Yield scores, carcasses are either determined to be discount, at par value or premium. Discounts and premiums are kept constant and issued plus or minus \$0.20/kg based on par value. For instance, if par value is \$3.46/kg and a carcase is deemed to warrant premium from the grid system, the carcase will be valued at \$3.66/kg. Par value is not a fixed price and can vary depending on the time of year or season.

After all carcasses in a consignment have been categorised as discount, par value or premium the average price per carcase is determined. The average price per carcase is drawn from the total amount paid for all carcasses (taking into account premiums and discounts) and then divided by the total consignment size. This average price per carcase is then compared with the standard 'Over the Hooks' payment and is referred to as the 'Over the Hooks Comparison'. The difference between these two values is the total premium return per carcase.

The consignment with the highest premium return per carcase above the standard 'Over the Hooks' quote is designated the winner of the RAS Prime Lamb Carcase Competition.



**Figure 1.1** Carcase assessment by VIAscan



**Figure 1.2** VIAscan image of a carcase



## 2006 AWARD WINNERS

### FIRST PLACE

#### **Graham Sudholz**

##### **KOTUPNA, VIC**

Sire(s): White Suffolk and Poll Dorset

Dam(s): East Friesian/Texel/Coopworth

Average Carcase Weight (kg): 26.0

Average Lean Meat Yield (%): 56.3

\$4.53 Total Premium per Carcase

### SECOND PLACE

#### **David Ware**

##### **HAWKESDALE, VIC**

Sire(s): Texel and Texel Cross

Dam(s): East Friesian/Texel/Coopworth

Average Carcase Weight (kg): 24.7

Average Lean Meat Yield (%): 57.3

\$4.32 Total Premium per Carcase

### THIRD PLACE

#### **Lawry Simpson**

##### **OAKLANDS, NSW**

Sire(s): Composite Poll Dorset

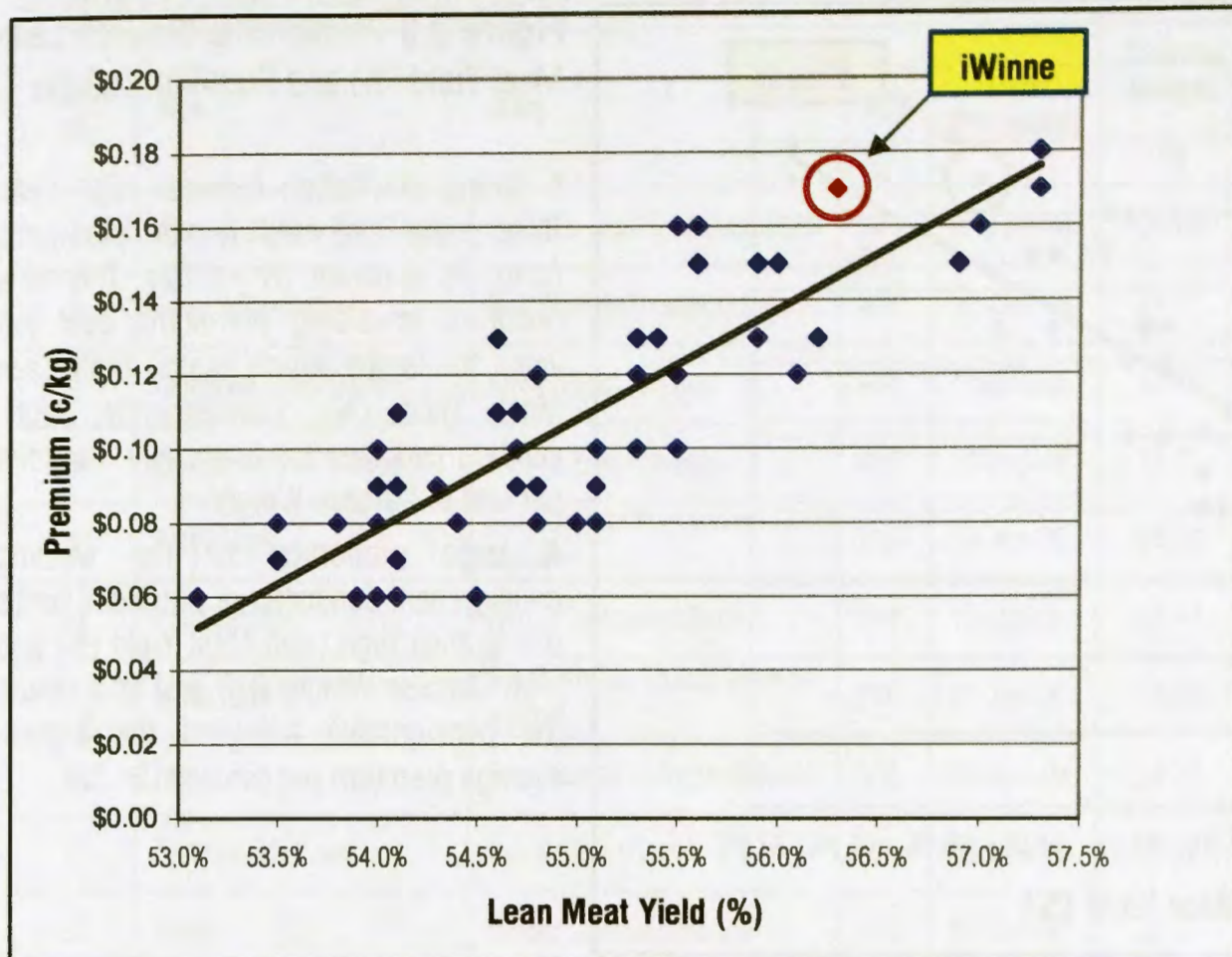
Dam(s): East Friesian/Merino

Average Carcase Weight (kg): 23.9

Average Lean Meat Yield (%): 57.3

\$ 4.12 Total Premium per Carcase

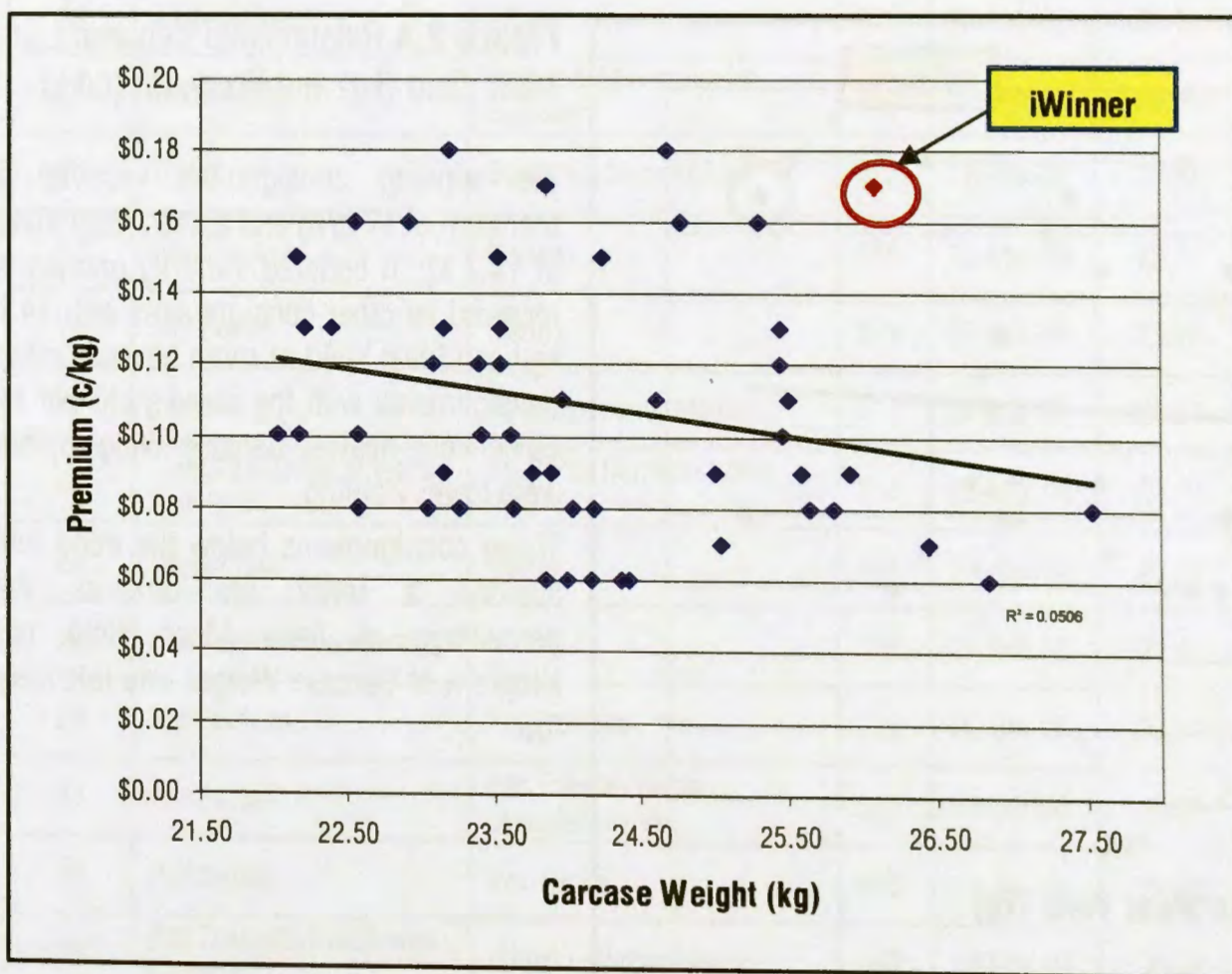




**Figure 2.1** Relationship between Carcase Weight (kg) and Lean Meat Yield (%)

The correlation ( $R^2=0.30$ ) between Carcase Weight (kg) and Lean Meat Yield (%) is evident. As Carcase Weight increases, the percent of Lean Meat Yield decreases, due to the fact that carcasses generally become fatter with increased weight.

The winning consignment attained the highest Lean Meat Yield percentage relative to its Carcase Weight and was therefore rewarded by the grid system which awards premiums over par value based on heavier Carcase Weights (kg) and higher Lean Meat Yield (%).



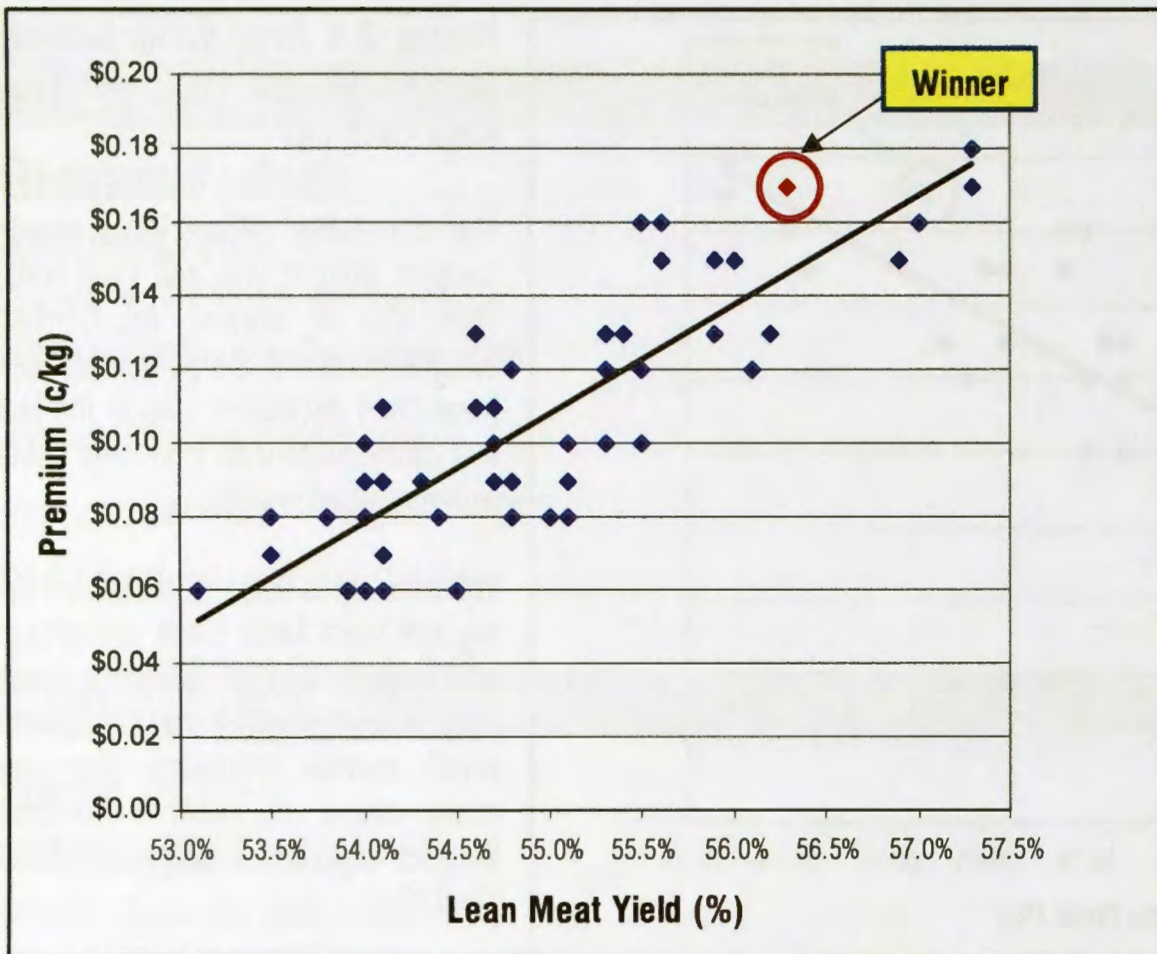
**Figure 2.2** Relationship between Carcase Weight (kg) and Premium (c/kg)

The trend is for premium (c/kg) to decrease as Carcase Weight (kg) increases ( $R^2=0.05$ ). Generally, the higher the Carcase Weight, the fatter the lambs, which reduces their value on a c/kg basis, as fat has to be trimmed resulting in discounts from par value.

The slope of the trend line is not very steep as many consignments in the Competition were of a high standard, maintaining good Lean Meat Yield at heavier Carcase Weights.



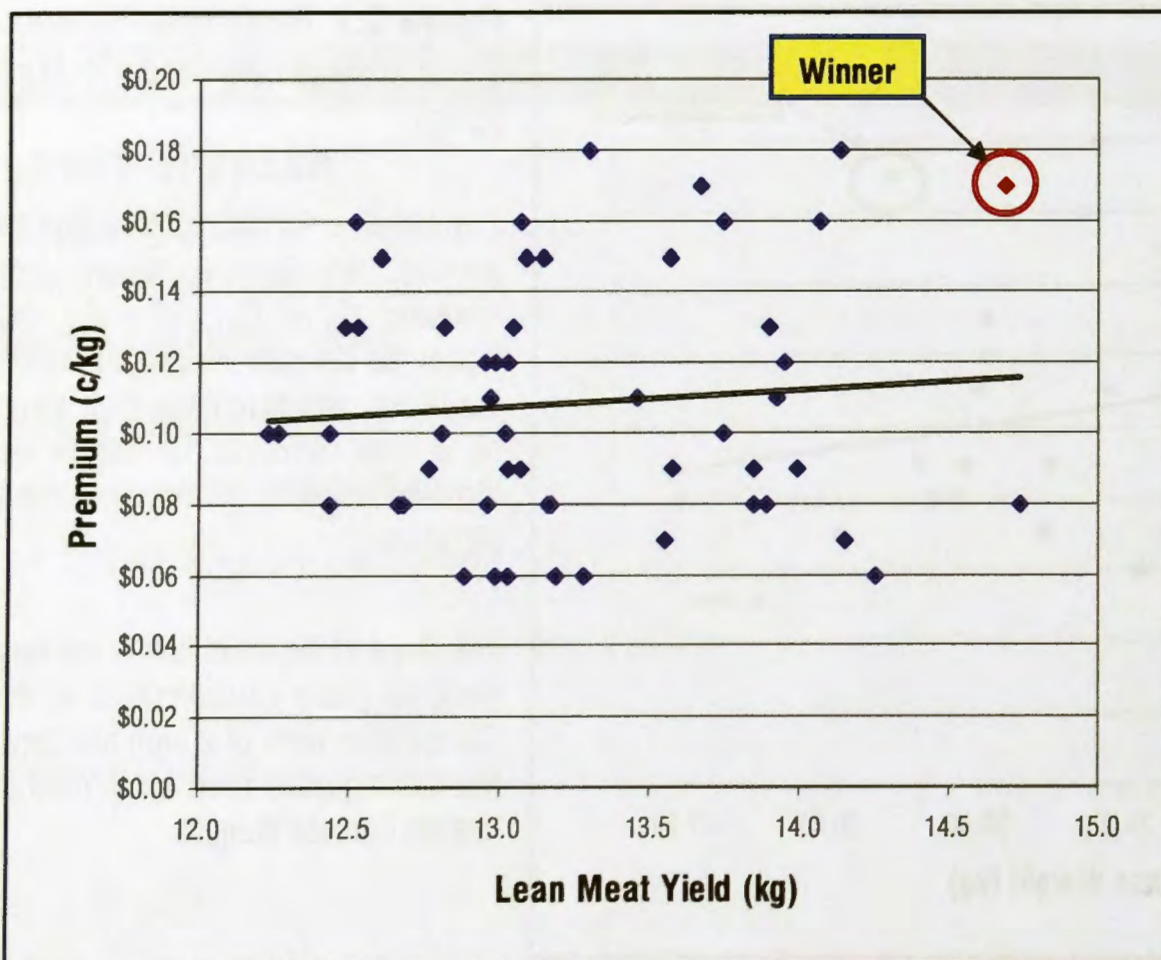
## RESULTS



**Figure 2.3** Relationship between Lean Meat Yield (%) and Premium (c/kg)

A strong correlation between high Lean Meat Yield (%) and higher premiums (c/kg) is apparent ( $R^2=0.72$ ). This is a result of rewarding premiums over par value for lambs which exhibit high Lean Meat Yield (%). Consequently, high-yielding carcasses are financially rewarded per unit of Carcase Weight.

A large proportion of the winning consignment consisted of premium lambs due to their high Lean Meat Yield (%) and high Carcase Weight (kg) and as a result, the consignment achieved the highest average premium per carcass (\$4.53).



**Figure 2.4** Relationship between Lean Meat Yield (kg) and Premium (c/kg)

The winning consignment received a premium of 17 c/kg and a Lean Meat Yield of 14.7 kg. It bettered the c/kg premiums received by other consignments with 14.7 kg Lean Meat Yield or more because other consignments with the same yield per kg came from heavier Carcase Weights, but were lower yielding.

Those consignments below the trend line attained a lower premium as the percentage of Lean Meat Yield per kilogram of Carcase Weight was relatively low.



# RESULTS

## Summary of 2006 Prime Lamb Entries

Entrant ID	Sire	Dam	QTY	Date Processed	Carcase Weight kg	Lean Meat Yield		Premium per Carcase (\$)	Premium c/kg
						%	kg		
1	White Suffolk & Poll Dorset	East Friesian/Texel/Coopworth	243	21-Feb-06	26.09	56.3%	14.7	\$4.53	\$0.17
2	Texel & Texel Cross	East Friesian/Texel/Coopworth	487	12-Dec-06	24.67	57.3%	14.1	\$4.32	\$0.18
3	Composite Poll Dorset	Merino/East Friesian	446	11-Oct-06	23.86	57.3%	13.7	\$4.12	\$0.17
4	Composite Poll Dorset	Merino/East Friesian	437	10-Feb-06	23.20	57.3%	13.3	\$4.07	\$0.18
5	Poll Dorset	East Friesian/Merino/Poll Dorset	215	13-Jan-06	25.30	55.6%	14.1	\$4.01	\$0.16
6	Poll Dorset	Border Leicester/Merino	278	11-Oct-06	24.77	55.5%	13.7	\$3.96	\$0.16
7	White Suffolk	South African Mutton Merino - Bond	276	03-Jan-06	23.08	56.1%	12.9	\$3.68	\$0.12
8	Texel	Texel/Border Leicester/Merino	305	09-Nov-06	24.23	56.0%	13.6	\$3.62	\$0.15
9	East Friesian/Texel	East Friesian/Texel	450	08-Nov-06	22.92	57.0%	13.1	\$3.61	\$0.16
10	Texel	Border Leicester/Merino	360	18-Jan-06	23.10	57.0%	13.2	\$3.54	\$0.15
11	Poll Dorset	Merino	225	09-Jan-06	23.53	55.6%	13.1	\$3.45	\$0.15
12	White Suffolk/Dorset	First Cross	293	18-Dec-06	23.52	55.9%	13.1	\$3.42	\$0.15
13	White Suffolk & Dorset	Border Leicester/Merino	330	22-Feb-06	22.15	56.9%	12.6	\$3.28	\$0.15
14	White Suffolk	Merino	278	29-Mar-06	25.45	54.6%	13.9	\$3.24	\$0.13
15	White Suffolk	Merino & Merino/Border Leicester	337	07-Feb-06	25.45	54.8%	13.9	\$3.18	\$0.12
16	Dorset	Border Leicester/Merino	472	17-Mar-06	23.97	54.1%	13.0	\$3.10	\$0.11
17	White Suffolk	Merino	255	23-Mar-06	22.55	55.5%	12.5	\$3.01	\$0.16
18	Poll Dorset	Merino	293	09-Feb-06	23.17	55.3%	12.8	\$2.95	\$0.13
19	Texel	Border Leicester/Merino	414	24-Mar-06	23.54	55.4%	13.0	\$2.95	\$0.13
20	Texel/Poll Dorset or White Suffolk	Texel/Poll Dorset or White Suffolk	216	03-Mar-06	23.39	55.5%	13.0	\$2.87	\$0.12
21	Dorset/Texel	Merino	437	29-Jun-06	25.50	54.6%	13.9	\$2.85	\$0.11
22	East Friesian/Coopworth	Merino	355	28-Feb-06	22.40	55.9%	12.5	\$2.84	\$0.13
23	Not Provided	Not Provided	238	26-Oct-06	22.21	56.2%	12.5	\$2.81	\$0.13
24	Poll Dorset	East Friesian/Border Leicester/Merino	396	13-Jan-06	23.55	55.3%	13.0	\$2.80	\$0.12
25	Poll Dorset	First Cross	400	05-Jan-06	24.60	54.7%	13.5	\$2.78	\$0.11
26	Poll Dorset/Suffolk/Border Leicester	Border Leicester/Merino	462	09-Mar-06	25.46	54.0%	13.7	\$2.54	\$0.10



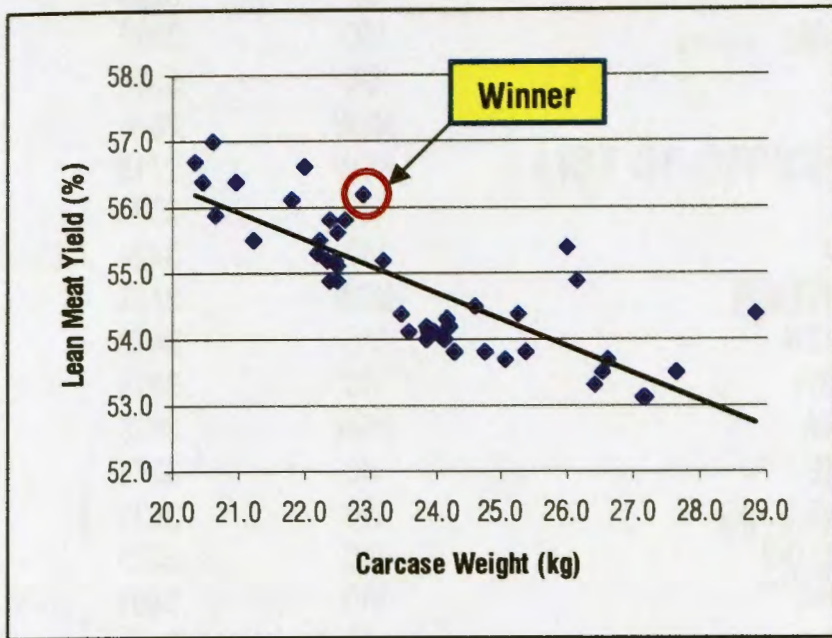
# RESULTS

Entrant ID	Sire	Dam	QTY	Date Processed	Carcase Weight kg	Lean Meat Yield		Premium per Carcase (\$)	Premium c/kg
						%	kg		
27	Poll Dorset	First Cross	299	12-Oct-06	23.62	55.1%	13.0	\$2.42	\$0.10
28	Dorset	Merino	210	13-Nov-06	25.01	54.3%	13.6	\$2.27	\$0.09
29	Poll Dorset	Border Leicester/Merino	200	11-Oct-06	27.55	53.5%	14.7	\$2.27	\$0.08
30	White Suffolk	Merino	237	01-Mar-06	25.64	54.0%	13.8	\$2.26	\$0.08
31	First Cross	Not Provided	660	12-Oct-06	25.91	54.0%	14.0	\$2.25	\$0.09
32	Dorset	First Cross	245	27-Oct-06	22.03	55.5%	12.2	\$2.23	\$0.10
33	Composites	Composites	300	05-Jul-06	23.77	54.8%	13.0	\$2.23	\$0.09
34	Dorset	Merino	297	23-Jan-06	22.57	55.1%	12.4	\$2.23	\$0.10
35	Poll Dorset/White Suffolk	First Cross	290	12-Apr-06	25.59	54.1%	13.8	\$2.21	\$0.09
36	White Dorper	Merino	677	05-Oct-06	22.17	55.3%	12.3	\$2.12	\$0.10
37	Texel/Dorset & Dorset	East Friesian/Coopworth/Merino	234	03-Mar-06	23.41	54.7%	12.8	\$2.08	\$0.10
38	Poll Dorset	Border Leicester/Merino	203	01-Nov-06	23.89	54.7%	13.1	\$2.04	\$0.09
39	White Suffolk	Merino	343	08-Feb-06	25.81	53.8%	13.9	\$2.03	\$0.08
40	Not Provided	Not Provided	356	03-Jan-06	24.19	54.4%	13.2	\$1.99	\$0.08
41	Dorset Cross	First Cross	372	12-Oct-06	23.16	55.1%	12.8	\$1.97	\$0.09
42	Poll Dorset	Merino/Border Leicester	670	19-Oct-06	23.64	54.8%	13.0	\$1.85	\$0.08
43	White Suffolk	Merino	259	09-Nov-06	24.03	54.8%	13.2	\$1.81	\$0.08
44	Poll Dorset	First Cross	648	11-Oct-06	26.45	53.5%	14.2	\$1.81	\$0.07
45	White Suffolk/Dorset	Not Provided	546	14-Nov-06	22.57	55.1%	12.4	\$1.78	\$0.08
46	Dorset	Merino	247	16-Oct-06	25.04	54.1%	13.5	\$1.76	\$0.07
47	Dorset	First Cross	241	23-Oct-06	23.05	55.0%	12.7	\$1.73	\$0.08
48	White Suffolk/Poll Dorset	Merino	241	11-Jan-06	26.85	53.1%	14.3	\$1.55	\$0.06
49	Border Leicester	Merino	296	27-Mar-06	24.36	54.5%	13.3	\$1.51	\$0.06
50	Poll Dorset	Border Leicester/Merino	313	11-Oct-06	23.86	54.0%	12.9	\$1.50	\$0.06
51	Poll Dorset	Merino	227	08-Feb-06	24.17	53.9%	13.0	\$1.45	\$0.06
52	Dorset	Border Leicester/Merino	643	06-Nov-06	24.00	54.1%	13.0	\$1.43	\$0.06
53	Poll Dorset	Merino x Merino/Border Leicester	252	12-Oct-06	24.42	54.0%	13.2	\$1.38	\$0.06
54	Poll Dorset/White Suffolk	Border Leicester/Merino	477	25-Jan-06	23.28	54.4%	12.7	\$1.29	\$0.08
<b>Average</b>					<b>24.11</b>	<b>55.1%</b>	<b>13.3</b>	<b>\$2.61</b>	<b>\$0.11</b>

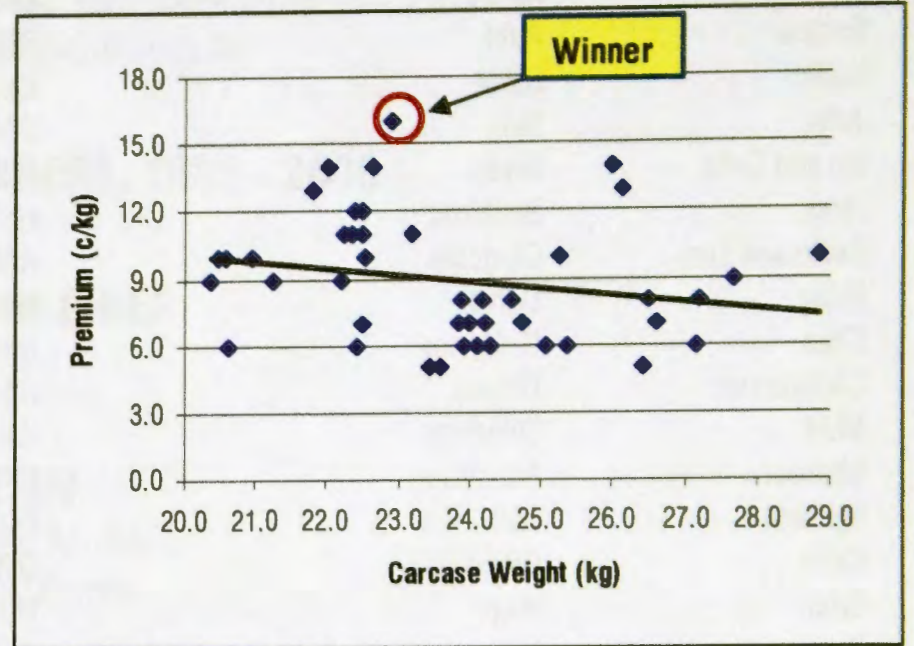


## COMPARATIVE RESULTS FROM 2005

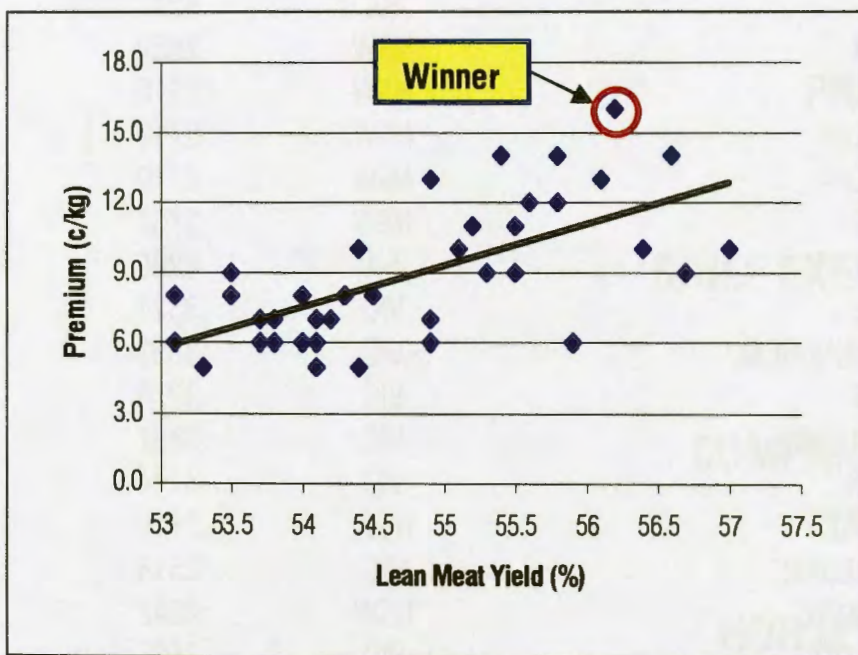
Results of the **2005 Competition** are presented in Figures 3.1 to 3.4.



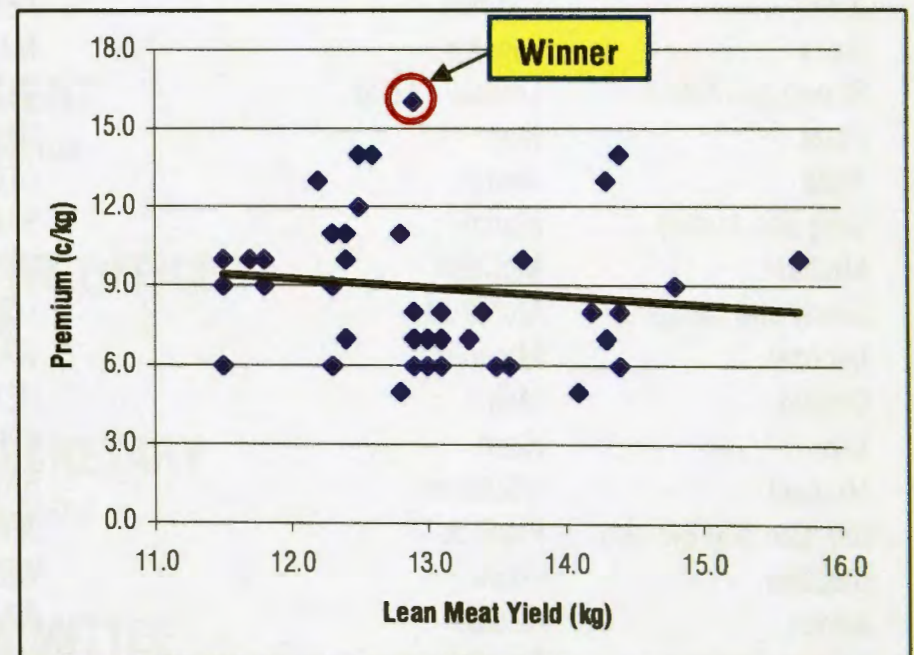
**Figure 3.1** – The relationship between Carcase Weight (kg) and Lean Meat Yield (%)



**Figure 3.2** – The relationship between Carcase Weight (kg) and Premium (c/kg)



**Figure 3.3** – The relationship between Lean Meat Yield (%) and Premium (c/kg)



**Figure 3.4** – The relationship between Lean Meat Yield (kg) and Premium (c/kg)

The 2005 results show that consignments had an average Carcase Weight (kg) and Lean Meat Yield (%) lower than those entries received in 2006. As a result, premiums (c/kg) received by 2006 entrants were higher than those awarded to 2005 entrants.

The 2006 Competition's winning consignment achieved the highest Premium Value per Carcase, resulting from its combination of high Lean Meat Yield and heavier Carcase Weight.